



JEREMY JAMES

HARMONT HOUSE, HARLEY STREET, MARYLEBONE VILLAGE, LONDON, W1



PRICE
£749,500

TENURE
Freehold

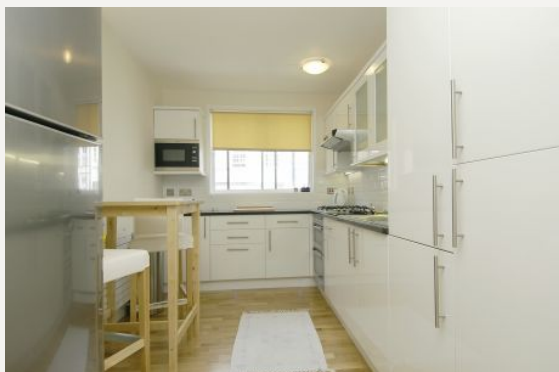
33 New Cavendish Street
London,
W1G 9TS
020 7486 4111

jeremyjames@jeremy-james.co.uk



JEREMY JAMES

HARMONT HOUSE, HARLEY STREET, MARYLEBONE VILLAGE, LONDON, W1



DESCRIPTION

An exceptionally well presented second floor one bedroom apartment of over 800 sq ft. Located in the popular modern building on the corner of Harley Street and Queen Anne Street, close to the facilities of Marylebone High Street. Bond Street and Oxford Street tube stations are also within close proximity. There is potential for medical use. Accommodation comprises of a good Entrance hall, Reception with separate study and dining area, Master bedroom with En suite bathroom and built in wardrobes, WC and further storage space.

AMENITIES

Over 800 square feet
Medical licence may be available
Day porter
Live in Porter
Near to the two passenger lifts
Newly refurbished
Excellent storage
Separate WC
Pay parking available in the basement

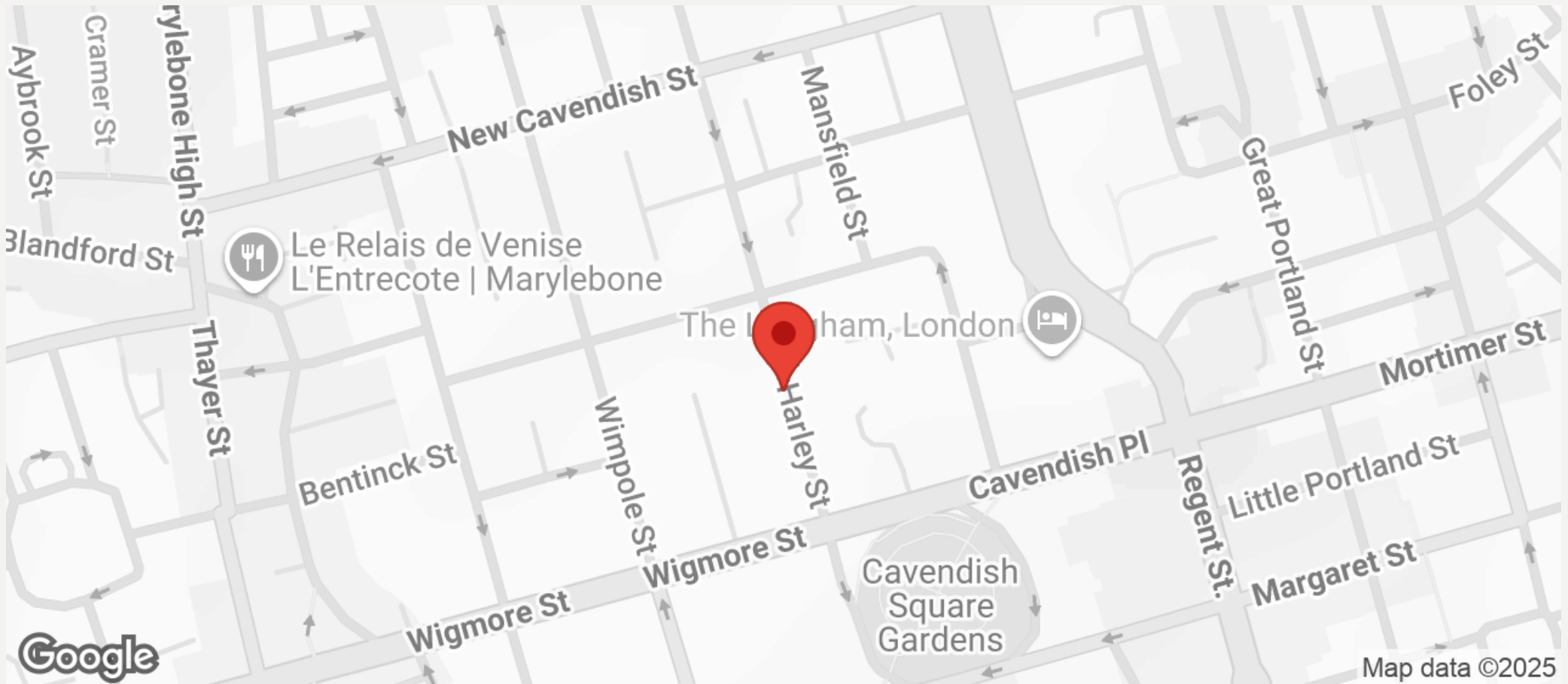
33 New Cavendish Street
London,
W1G 9TS

020 7486 4111
jeremyjames@jeremy-james.co.uk



JEREMY JAMES

HARMONT HOUSE, HARLEY STREET, MARYLEBONE VILLAGE, LONDON, W1



All negotiations are subject to contract. The Agents are not authorised to make or accept any contractual offer unless prior written notification to the contrary has been given on behalf of the client. In no other case whatsoever are the Agents (or any employee or sub-agent) authorised to make or give any representation or warranty on behalf of any party, and whilst information and particulars are given in all good faith intending purchasers and lessees must satisfy themselves independently as to the accuracy of all matters upon which then intend to rely. Measurements or distances referred to are approximately only. We have not carried out a survey or tested the services, appliances or specific fittings.

33 New Cavendish Street
London,
W1G 9TS

020 7486 4111

jeremyjames@jeremy-james.co.uk