



JEREMY JAMES

HARLEY STREET, MARYLEBONE, LONDON W1



PRICE
£895,500

TENURE
Freehold



JEREMY JAMES

HARLEY STREET, MARYLEBONE, LONDON W1



DESCRIPTION

Accommodation comprises; Entrance hall, Wood paneled reception room, Two bedrooms, Two bathrooms one en-suite, Kitchen and seperate cloakroom.

Oxford Circus and Bond Street underground stations are also nearby.

Passenger lift access is directly within the apartment.

AMENITIES

Top Floor Maisonette

Air Conditioning

Passenger lift

Independent gas central heating

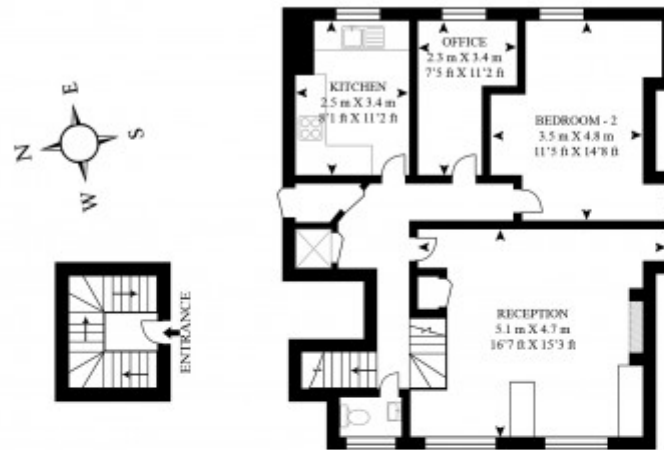
Medical license available

33 New Cavendish Street
London,
W1G 9TS

020 7486 4111
jeremyjames@jeremy-james.co.uk

HARLEY STREET

APPROX GROSS INTERNAL FLOOR AREA
1205 SQ.FT (112 SQ.M.)



FOURTH FLOOR



FIFTH FLOOR

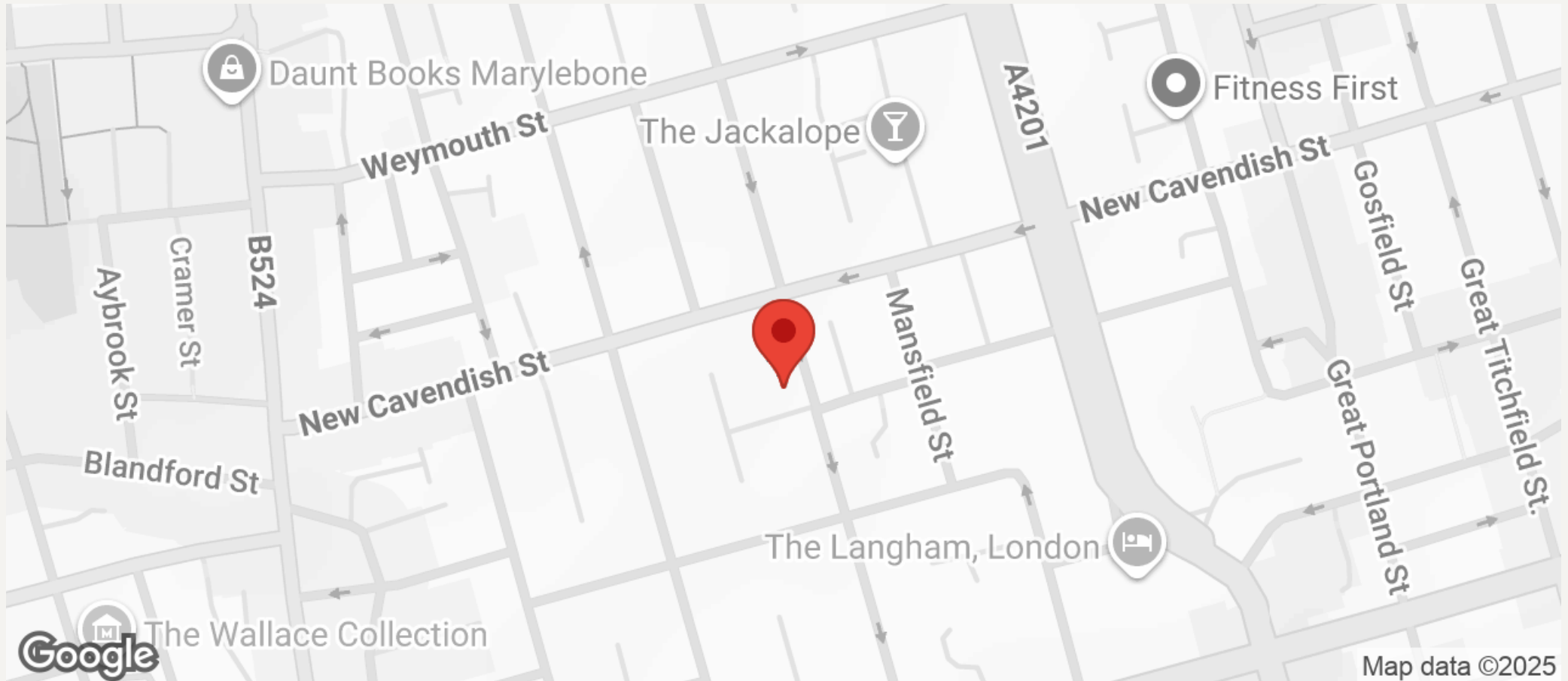
As Defined by RICS - Code of Measuring Practice

The Floor - plans are for representation purposes only and
should be used as such by any prospective client.



JEREMY JAMES

HARLEY STREET, MARYLEBONE, LONDON W1



All negotiations are subject to contract. The Agents are not authorised to make or accept any contractual offer unless prior written notification to the contrary has been given on behalf of the client. In no other case whatsoever are the Agents (or any employee or sub-agent) authorised to make or give any representation or warranty on behalf of any party, and whilst information and particulars are given in all good faith intending purchasers and lessees must satisfy themselves independently as to the accuracy of all matters upon which then intend to rely. Measurements or distances referred to are approximately only. We have not carried out a survey or tested the services, appliances or specific fittings.

33 New Cavendish Street
London,
W1G 9TS

020 7486 4111

jeremyjames@jeremy-james.co.uk