



JEREMY JAMES

PARK CRESCENT MEWS EAST, MARYLEBONE VILLAGE. LONDON W1W



PRICE

£545 per week

FURNINSHINGS

Unfurnished

DEPOSIT

£3,270

33 New Cavendish Street
London,
W1G 9TS

020 7486 4111
jeremyjames@jeremy-james.co.uk



JEREMY JAMES

PARK CRESCENT MEWS EAST, MARYLEBONE VILLAGE. LONDON W1W



DESCRIPTION

This charming mews house has been finished to a high standard and is located in a quiet location close to all the amenities of both Marylebone Village and Great Portland Street. The property is rented on an unfurnished basis and would be ideal for a single person or couple.

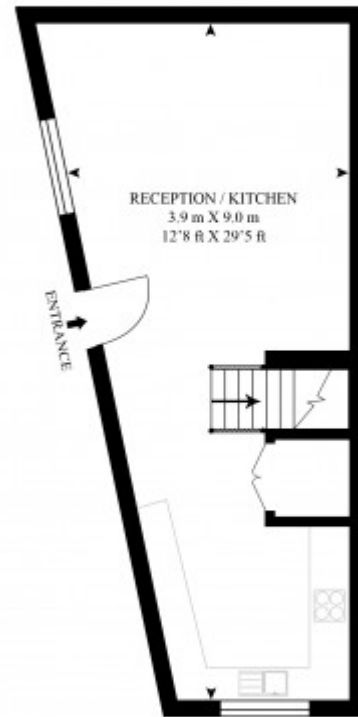
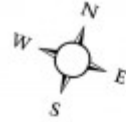
Accommodation comprises: spacious reception and modern kitchen with breakfast bar. Upstairs: double bedroom and bathroom with shower over bath.

AMENITIES

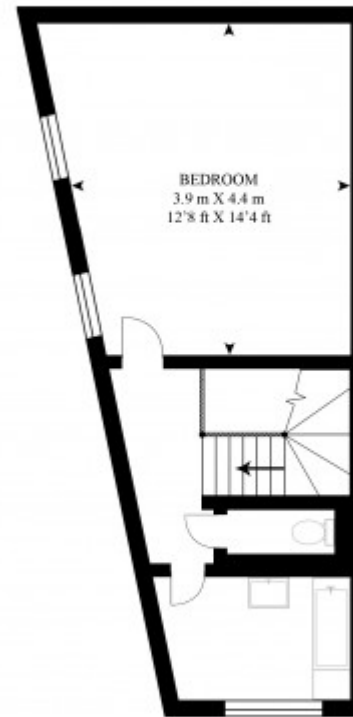
Mews house
592 sq ft
Large double bedroom
Two floors
Modern kitchen
Excellent finish throughout
Own front door

PARK CRESCENT MEWS EAST

APPROX GROSS INTERNAL FLOOR AREA
592 SQ.FT (55 SQ.M.)



GROUND FLOOR



FIRST FLOOR

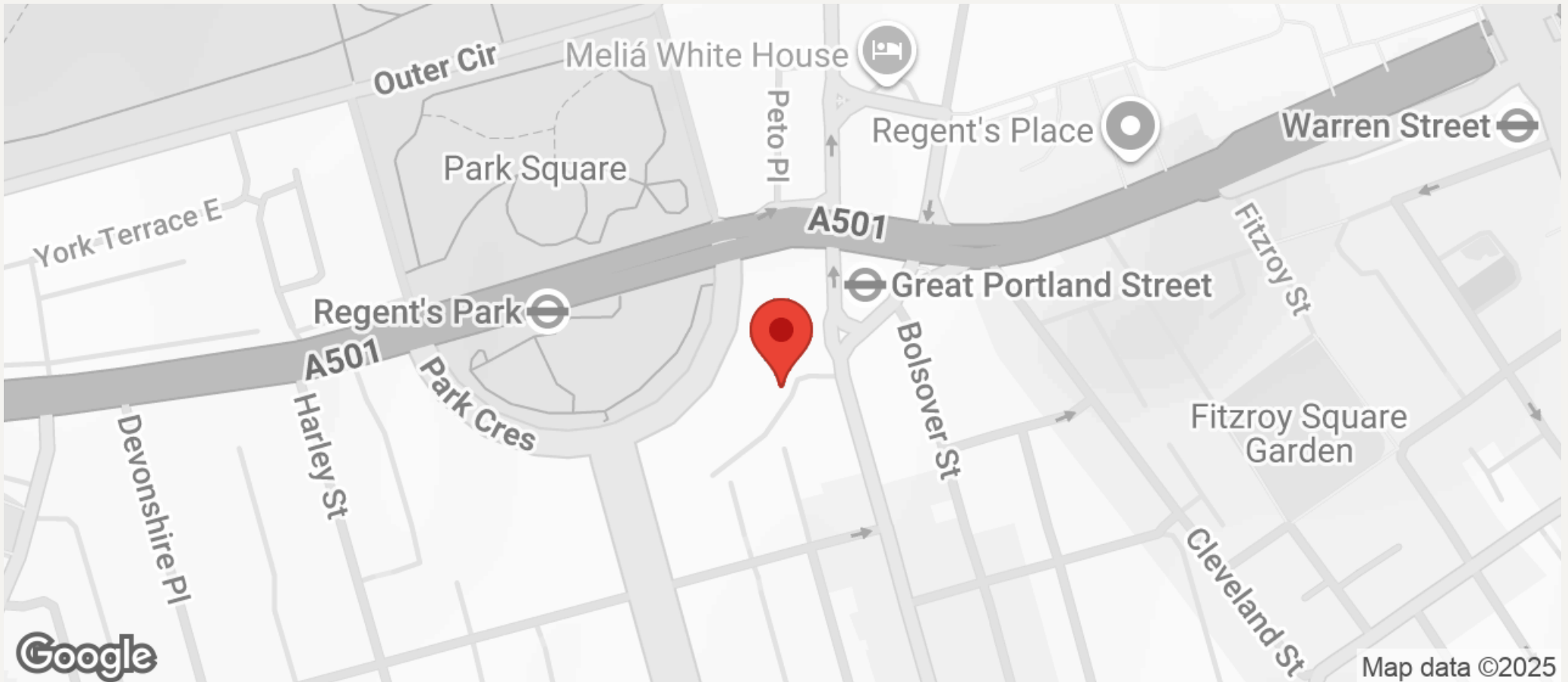
As Defined by RICS - Code of Measuring Practice

The Floor - plans are for representation purposes only and
should be used as such by any prospective client.



JEREMY JAMES

PARK CRESCENT MEWS EAST, MARYLEBONE VILLAGE. LONDON W1W



All negotiations are subject to contract. The Agents are not authorised to make or accept any contractual offer unless prior written notification to the contrary has been given on behalf of the client. In no other case whatsoever are the Agents (or any employee or sub-agent) authorised to make or give any representation or warranty on behalf of any party, and whilst information and particulars are given in all good faith intending purchasers and lessees must satisfy themselves independently as to the accuracy of all matters upon which then intend to rely. Measurements or distances referred to are approximately only. We have not carried out a survey or tested the services, appliances or specific fittings.

33 New Cavendish Street
London,
W1G 9TS

020 7486 4111

jeremyjames@jeremy-james.co.uk