



JEREMY JAMES

HARLEY PLACE, MARYLEBONE VILLAGE, LONDON W1



PRICE

£1,850,000

TENURE

Freehold

33 New Cavendish Street
London,
W1G 9TS

020 7486 4111
jeremyjames@jeremy-james.co.uk



JEREMY JAMES

HARLEY PLACE, MARYLEBONE VILLAGE, LONDON W1



DESCRIPTION

Accommodation comprises; Entrance hall, Reception room, Kitchen, Utility room, Three bedrooms, Ensuite shower room, Bathroom, Second shower room.

Potential roof terrace.

A single garage is available on separate terms.

AMENITIES



JEREMY JAMES

HARLEY PLACE, MARYLEBONE VILLAGE, LONDON W1



33 New Cavendish Street
London,
W1G 9TS

020 7486 4111
jeremyjames@jeremy-james.co.uk

HARLEY PLACE
LONDON W1

Gross Internal Area: 155 Sq. metres
1664 Sq. feet



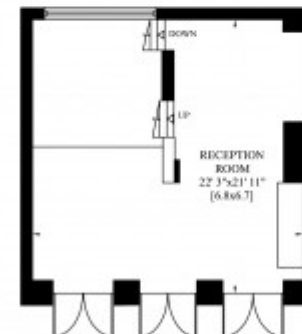
GROUND FLOOR



SECOND FLOOR



BASEMENT

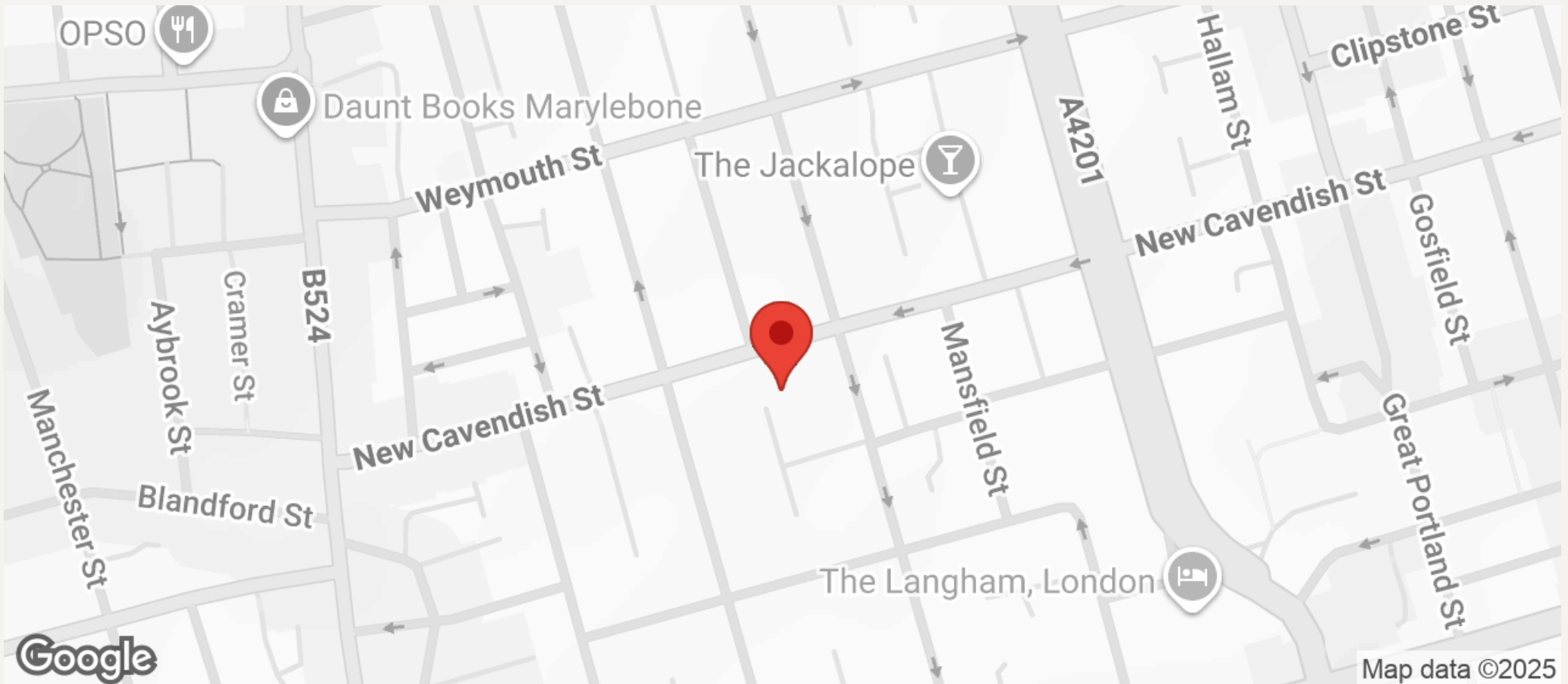


FIRST FLOOR



JEREMY JAMES

HARLEY PLACE, MARYLEBONE VILLAGE, LONDON W1



All negotiations are subject to contract. The Agents are not authorised to make or accept any contractual offer unless prior written notification to the contrary has been given on behalf of the client. In no other case whatsoever are the Agents (or any employee or sub-agent) authorised to make or give any representation or warranty on behalf of any party, and whilst information and particulars are given in all good faith intending purchasers and lessees must satisfy themselves independently as to the accuracy of all matters upon which then intend to rely. Measurements or distances referred to are approximately only. We have not carried out a survey or tested the services, appliances or specific fittings.

33 New Cavendish Street
London,
W1G 9TS

020 7486 4111

jeremyjames@jeremy-james.co.uk