



JEREMY JAMES

MARYLEBONE STREET, MARYLEBONE VILLAGE, LONDON W1



PRICE

£1,395,000

TENURE

Share of Freehold

33 New Cavendish Street
London,
W1G 9TS

020 7486 4111
jeremyjames@jeremy-james.co.uk



JEREMY JAMES

MARYLEBONE STREET, MARYLEBONE VILLAGE, LONDON W1



DESCRIPTION

This rarely available apartment located on the second floor is one of the largest in Maybury Court and comprises of 3 bedrooms, one en suite bathroom, reception room, kitchen and second bathroom. The building benefits from a delightful communal garden, onsite caretaker and passenger lift.

Maybury Court is situated a stone's throw away from Marylebone High Street with its popular restaurants, cafes and exclusive boutiques. Bond Street and Baker Street underground stations are within close proximity with the open spaces of Regents Park also nearby.

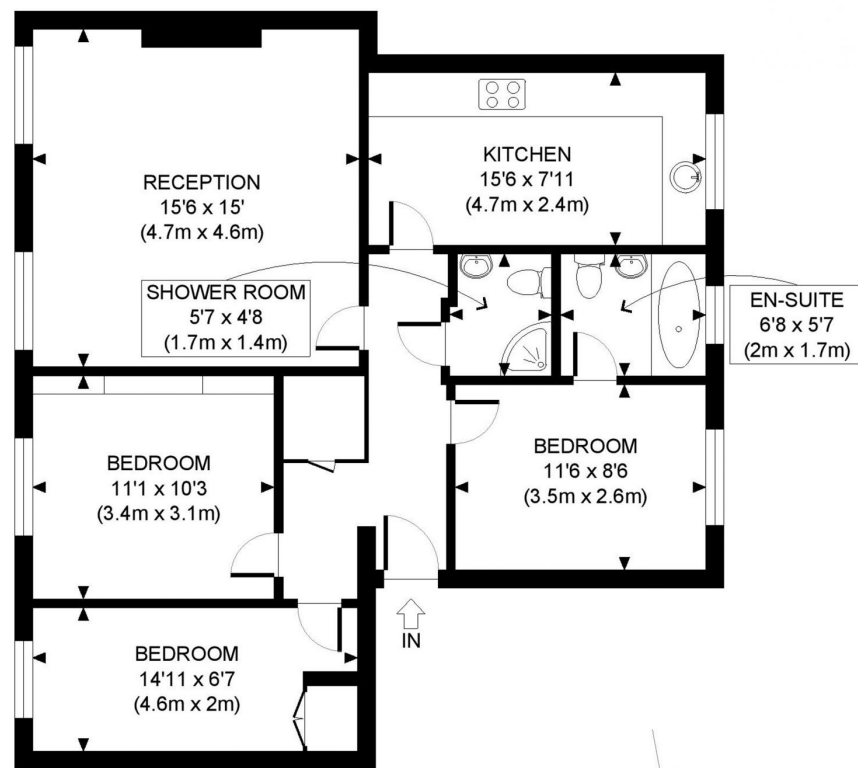


AMENITIES

Prime Marylebone
3 Bedrooms
Passenger Lift
2 Bathrooms
Share of Freehold
Onsite Caretaker
Communal Garden

33 New Cavendish Street
London,
W1G 9TS

020 7486 4111
jeremyjames@jeremy-james.co.uk



SECOND FLOOR
GROSS INTERNAL
FLOOR AREA 827 SQ FT

APPROX. GROSS INTERNAL FLOOR AREA: 827 SQ FT/ 76 SQM

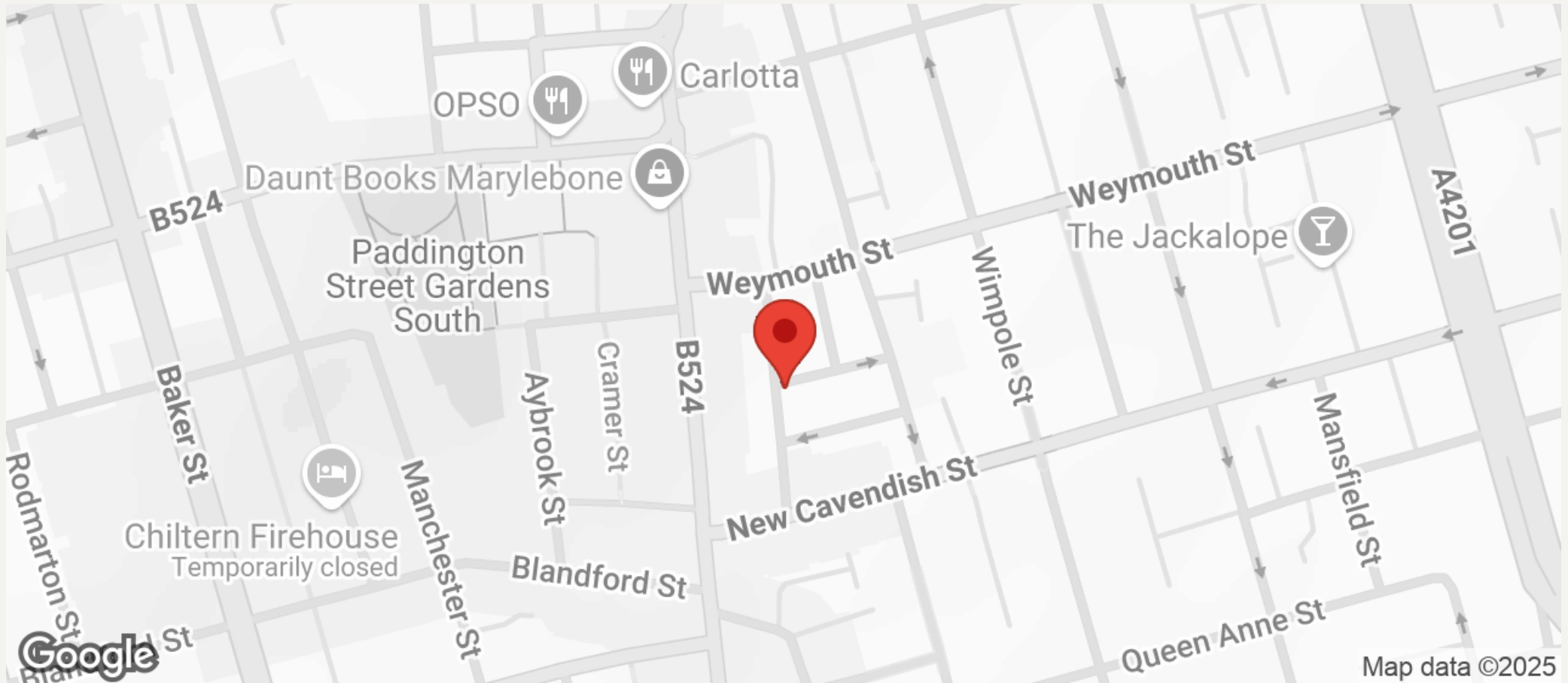
PROPERTY PHOTO PLANS.co.uk
ONE STOP SHOP FOR PROPERTY MARKETING

Whilst every attempt has been made to ensure the accuracy of the floor plan contained here, measurements of the doors, windows, rooms and any other items are approximate and no responsibility is taken for any errors, omissions, or miss-statement. This plan is for illustrative purposes only and should be used as such by any prospective client. The services, systems and appliances shown have not been tested and no guarantee as to the operability or efficiency can be given.



JEREMY JAMES

MARYLEBONE STREET, MARYLEBONE VILLAGE, LONDON W1



All negotiations are subject to contract. The Agents are not authorised to make or accept any contractual offer unless prior written notification to the contrary has been given on behalf of the client. In no other case whatsoever are the Agents (or any employee or sub-agent) authorised to make or give any representation or warranty on behalf of any party, and whilst information and particulars are given in all good faith intending purchasers and lessees must satisfy themselves independently as to the accuracy of all matters upon which then intend to rely. Measurements or distances referred to are approximately only. We have not carried out a survey or tested the services, appliances or specific fittings.

33 New Cavendish Street
London,
W1G 9TS

020 7486 4111
jeremyjames@jeremy-james.co.uk