



**JEREMY JAMES**

**DEVONSHIRE STREET, MARYLEBONE VILLAGE. LONDON W1**



**PRICE**

£535 per week

**FURNINSHINGS**

Furnished/Unfurnished

**DEPOSIT**

£3,210

---

33 New Cavendish Street  
London,  
W1G 9TS

020 7486 4111  
[jeremyjames@jeremy-james.co.uk](mailto:jeremyjames@jeremy-james.co.uk)



# JEREMY JAMES

## DEVONSHIRE STREET, MARYLEBONE VILLAGE. LONDON W1



### DESCRIPTION

This spacious and bright one double bedroom maisonette has been recently refurbished and benefits from wooden floors, separate kitchen, private terrace and plentiful storage.

Marylebone High Street with it's wide array of caes, shopping and restaurants is within a 5 minute walk.

### AMENITIES

Split Level Apartment

Wooden Floors

One Double Bedroom

Private Terrace

Separate Kitchen

Furnished by Separate Agreement

33 New Cavendish Street  
London,  
W1G 9TS

020 7486 4111  
[jeremyjames@jeremy-james.co.uk](mailto:jeremyjames@jeremy-james.co.uk)

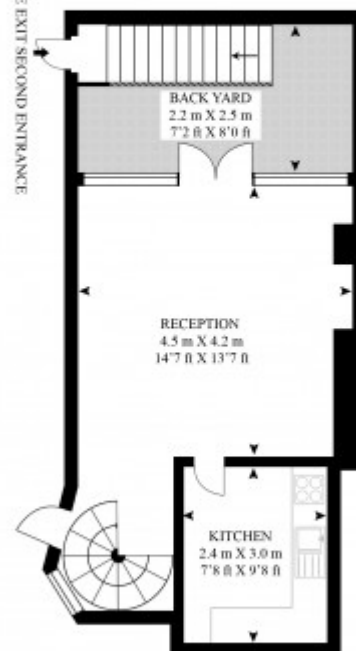
## FLAT 2, 5 DEVONSHIRE STREET

APPROX GROSS INTERNAL FLOOR AREA

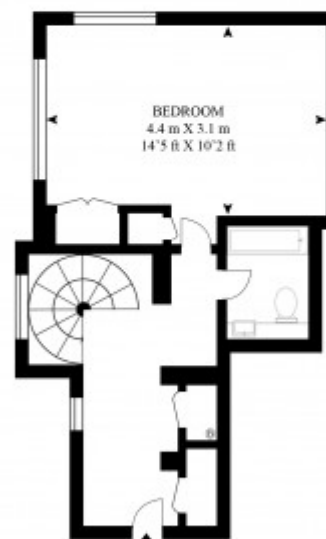
645 SQ.FT (60 SQ.M.)



FIRE EXIT SECOND ENTRANCE



LOWER GROUND FLOOR



ENTRANCE

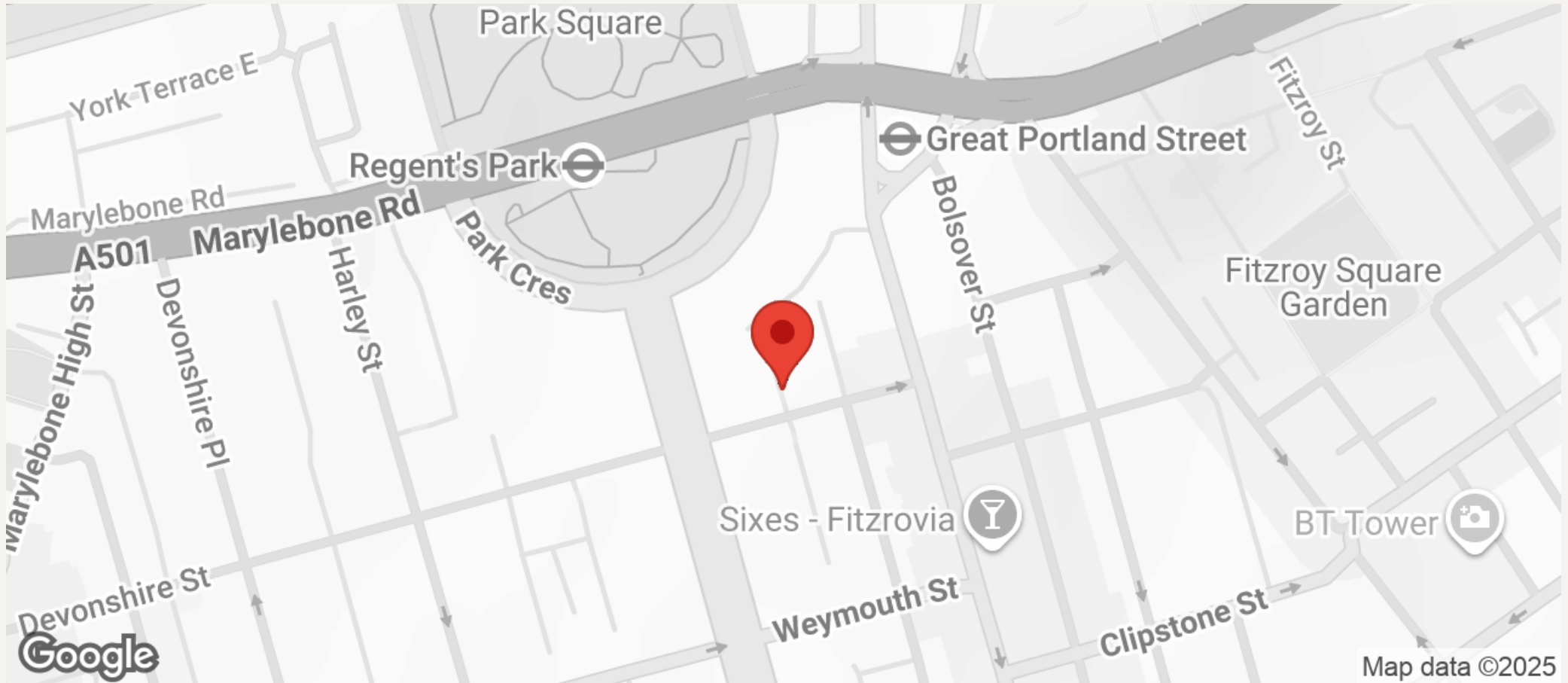
GROUND FLOOR

As Defined by RICS - Code of Measuring Practice  
The Floor - plans are for representation purposes only and  
should be used as such by any prospective client.



# JEREMY JAMES

## DEVONSHIRE STREET, MARYLEBONE VILLAGE. LONDON W1



All negotiations are subject to contract. The Agents are not authorised to make or accept any contractual offer unless prior written notification to the contrary has been given on behalf of the client. In no other case whatsoever are the Agents (or any employee or sub-agent) authorised to make or give any representation or warranty on behalf of any party, and whilst information and particulars are given in all good faith intending purchasers and lessees must satisfy themselves independently as to the accuracy of all matters upon which then intend to rely. Measurements or distances referred to are approximately only. We have not carried out a survey or tested the services, appliances or specific fittings.

33 New Cavendish Street  
London,  
W1G 9TS

020 7486 4111

[jeremyjames@jeremy-james.co.uk](mailto:jeremyjames@jeremy-james.co.uk)