



**JEREMY JAMES**

**WEYMOUTH STREET, MARYLEBONE VILLAGE. LONDON W1**



**PRICE**

£945 per week

**FURNINSHINGS**

Furnished/Unfurnished

**DEPOSIT**

£5,670

---

33 New Cavendish Street  
London,  
W1G 9TS

020 7486 4111  
[jeremyjames@jeremy-james.co.uk](mailto:jeremyjames@jeremy-james.co.uk)



# JEREMY JAMES

WEYMOUTH STREET, MARYLEBONE VILLAGE. LONDON W1



## DESCRIPTION

This flat comprises of three bedrooms, family bathroom, reception room, and separate kitchen.

Located just off Portland Place moments away from Oxford Street, Regent's Park and the various amenities of Great Portland Street with great transport links nearby.

Great Portland Street Underground Station (Hammersmith & City/Circle/Metropolitan) and Regent's Park Underground Station (Waterloo Line) is within a couple minutes while the A40 offers routes in and out of London for motorists.

## AMENITIES

Three Bedrooms / One Bathroom

Spacious Accommodation (1227 sqft)

First Floor (With Lift Access)

Porter Block

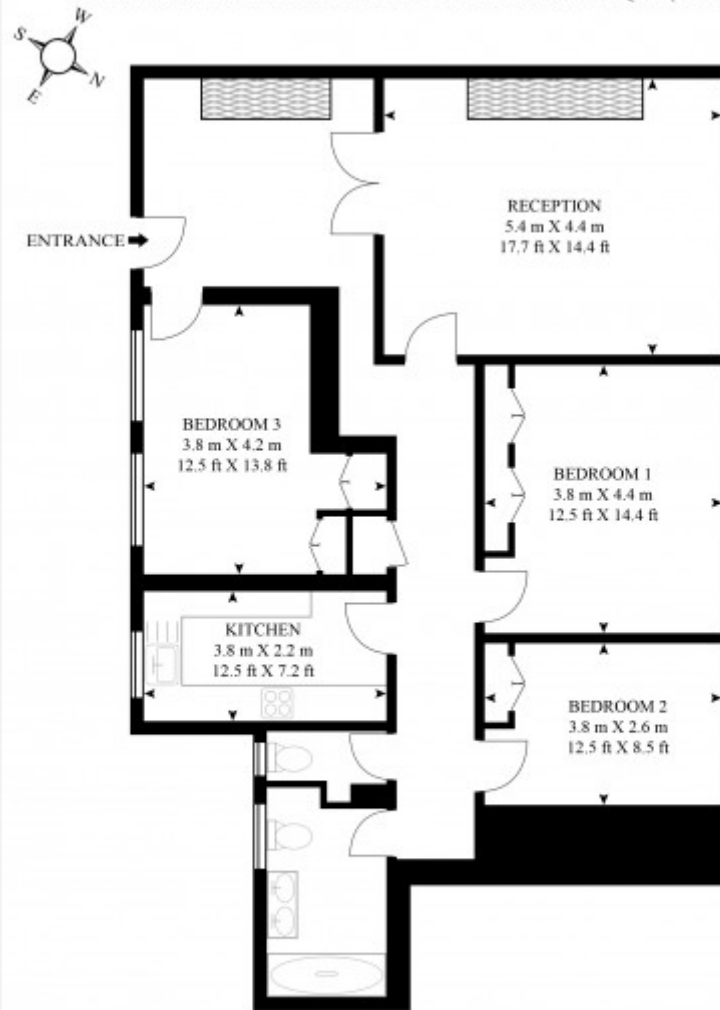
Furnished by Separate Agreement

33 New Cavendish Street  
London,  
W1G 9TS

020 7486 4111  
[jeremyjames@jeremy-james.co.uk](mailto:jeremyjames@jeremy-james.co.uk)

**10A STONE HOUSE, 9 WEYMOUTH STREET**

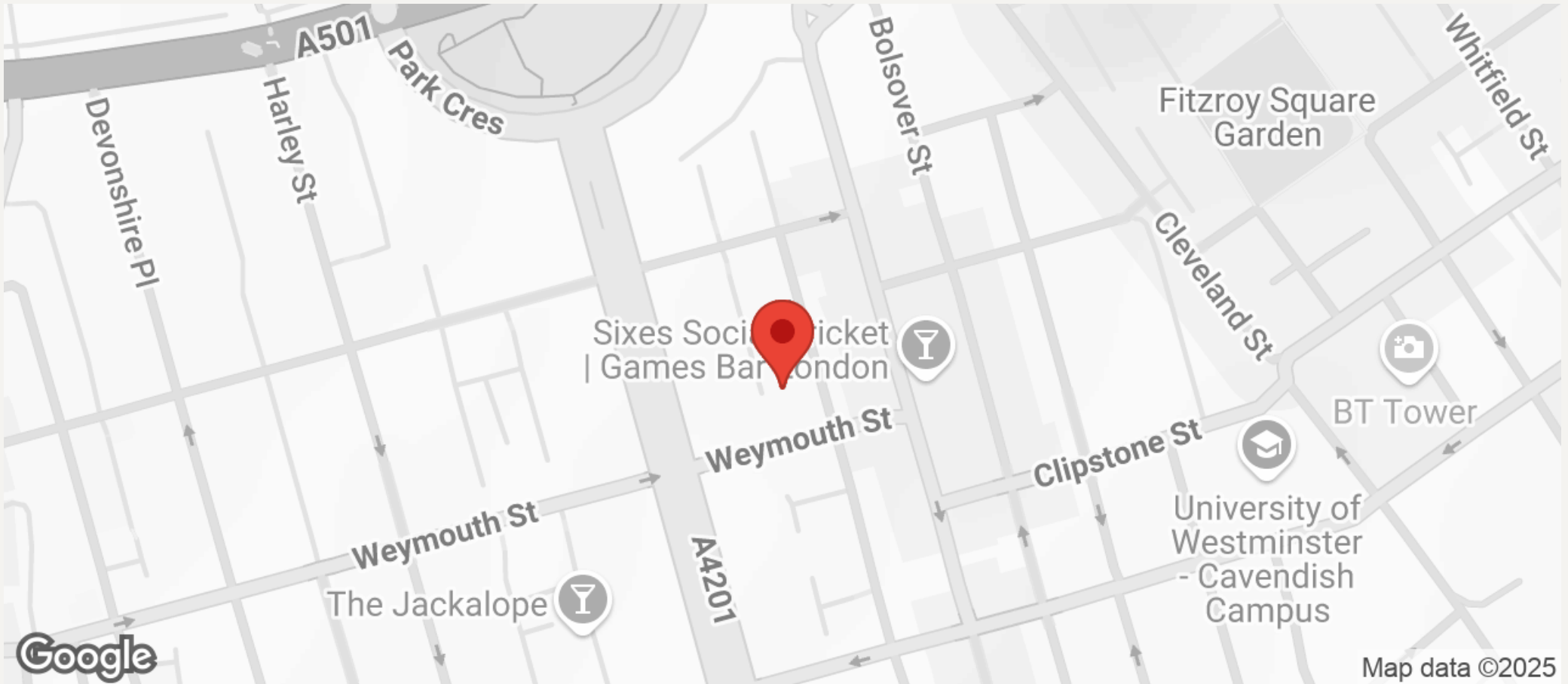
APPROXIMATE GROSS INTERNAL FLOOR AREA 1162 SQ.FT (108 SQ.M)





# JEREMY JAMES

## WEYMOUTH STREET, MARYLEBONE VILLAGE. LONDON W1



All negotiations are subject to contract. The Agents are not authorised to make or accept any contractual offer unless prior written notification to the contrary has been given on behalf of the client. In no other case whatsoever are the Agents (or any employee or sub-agent) authorised to make or give any representation or warranty on behalf of any party, and whilst information and particulars are given in all good faith intending purchasers and lessees must satisfy themselves independently as to the accuracy of all matters upon which then intend to rely. Measurements or distances referred to are approximately only. We have not carried out a survey or tested the services, appliances or specific fittings.

33 New Cavendish Street  
London,  
W1G 9TS

020 7486 4111

[jeremyjames@jeremy-james.co.uk](mailto:jeremyjames@jeremy-james.co.uk)