



JEREMY JAMES

DUDLEY HOUSE, WESTMORELAND STREET, LONDON W1



PRICE
£695,000

TENURE
Freehold



JEREMY JAMES

DUDLEY HOUSE, WESTMORELAND STREET, LONDON W1



DESCRIPTION

Accommodation comprises; Entrance hall with storage, Double reception room, Kitchen, Double bedroom, Bathroom with shower cubicle and separate cloak room.

Sinking fund – Â£3850.00 (Currently)

AMENITIES

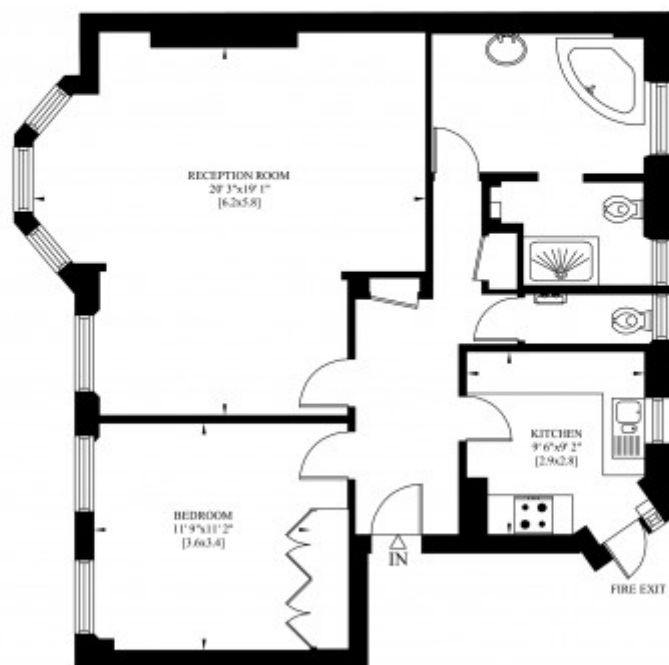
Passenger lift

Communal central heating system

Potential conversion to provide two/three bedrooms

8 DUDLEY HOUSE
WESTMORELAND STREET
LONDON W1G

Gross Internal Area: 78 Sq. metres
840 Sq. feet

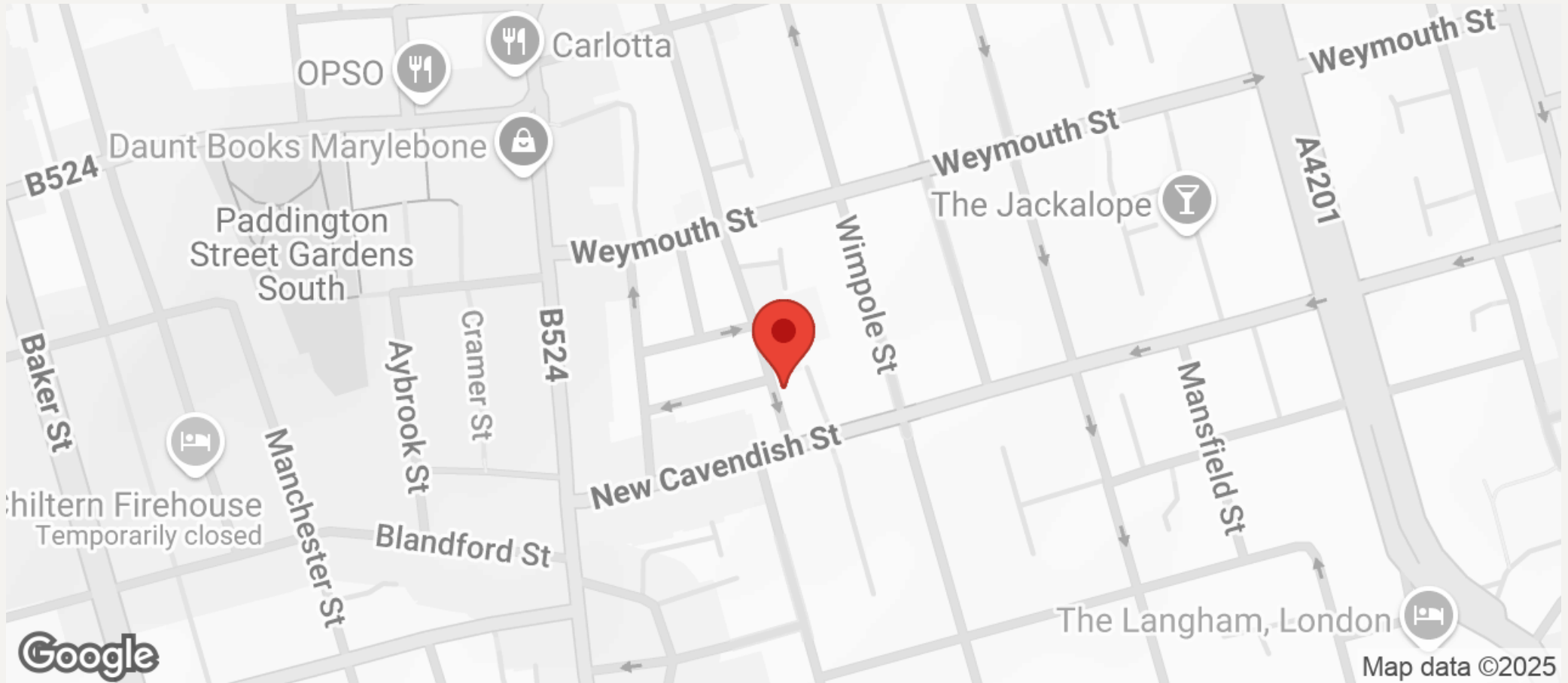


SECOND FLOOR



JEREMY JAMES

DUDLEY HOUSE, WESTMORELAND STREET, LONDON W1



All negotiations are subject to contract. The Agents are not authorised to make or accept any contractual offer unless prior written notification to the contrary has been given on behalf of the client. In no other case whatsoever are the Agents (or any employee or sub-agent) authorised to make or give any representation or warranty on behalf of any party, and whilst information and particulars are given in all good faith intending purchasers and lessees must satisfy themselves independently as to the accuracy of all matters upon which then intend to rely. Measurements or distances referred to are approximately only. We have not carried out a survey or tested the services, appliances or specific fittings.

33 New Cavendish Street
London,
W1G 9TS

020 7486 4111
jeremyjames@jeremy-james.co.uk