



JEREMY JAMES

WELBECK STREET, MARYLEBONE VILLAGE. LONDON W1



PRICE

£795 per week

FURNINSHINGS

Furnished

DEPOSIT

£4,950

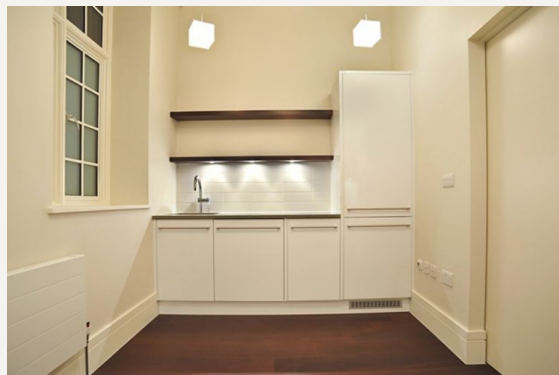
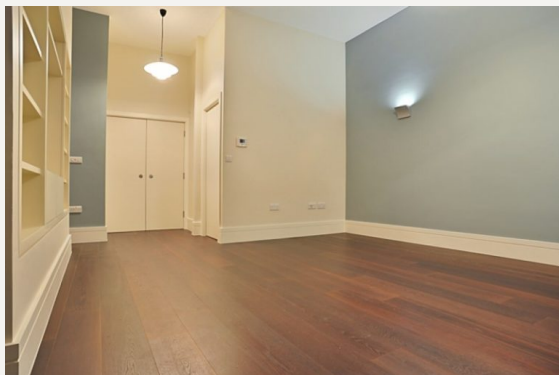
33 New Cavendish Street
London,
W1G 9TS

020 7486 4111
jeremyjames@jeremy-james.co.uk



JEREMY JAMES

WELBECK STREET, MARYLEBONE VILLAGE. LONDON W1



DESCRIPTION

This contemporary two double bedroom maisonette has been finished to an exacting standard throughout and is located close to all the amenities of Marylebone High Street.

Accommodation comprises: Large Reception with wooden floors, fully fitted bespoke kitchen. Two double bedrooms, one with ensuite, and family bathroom.

Viewing Highly Recommended.

AMENITIES

Two Double Bedrooms

Maisonette

Newly Refurbished

Excellent Finish Throughout

Bespoke Kitchen

Wooden Floors

Furnished by Separate Agreement

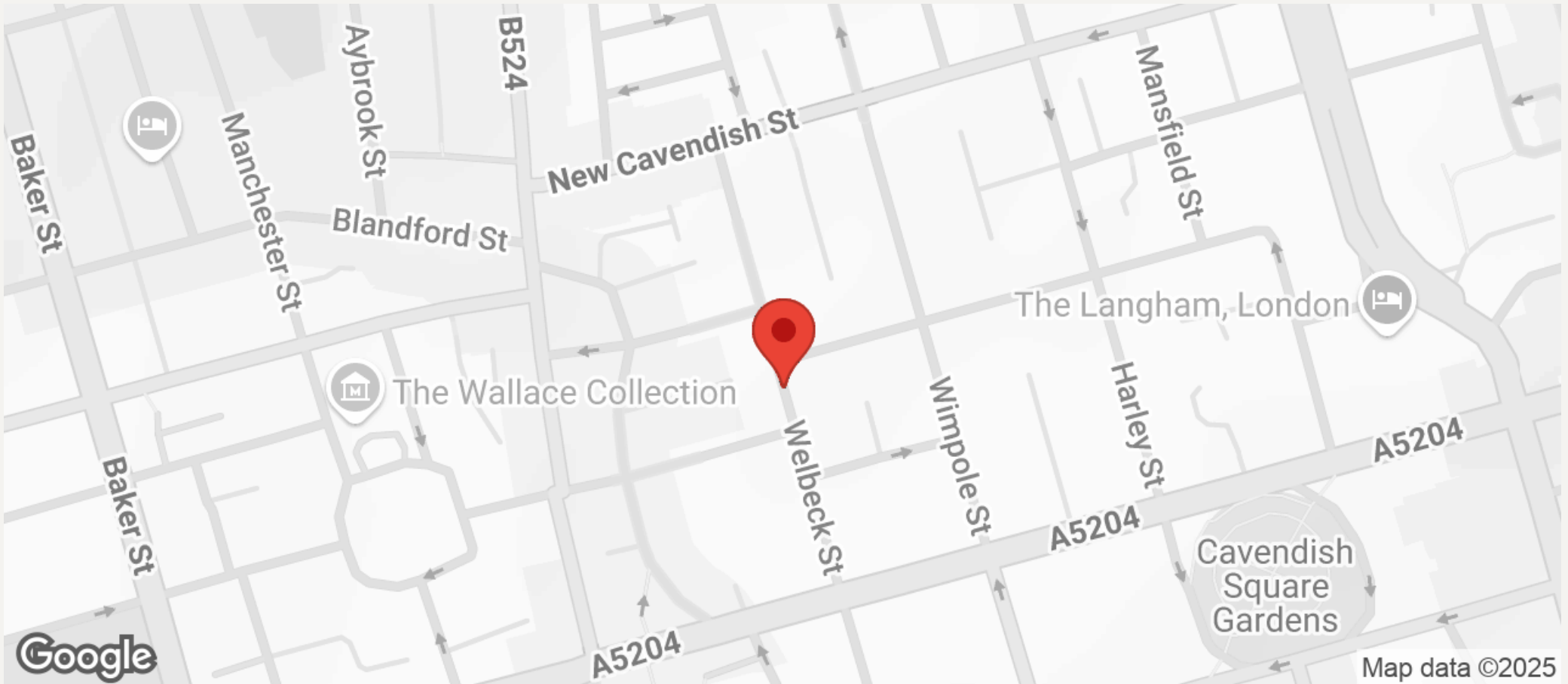
33 New Cavendish Street
London,
W1G 9TS

020 7486 4111
jeremyjames@jeremy-james.co.uk



JEREMY JAMES

WELBECK STREET, MARYLEBONE VILLAGE. LONDON W1



All negotiations are subject to contract. The Agents are not authorised to make or accept any contractual offer unless prior written notification to the contrary has been given on behalf of the client. In no other case whatsoever are the Agents (or any employee or sub-agent) authorised to make or give any representation or warranty on behalf of any party, and whilst information and particulars are given in all good faith intending purchasers and lessees must satisfy themselves independently as to the accuracy of all matters upon which then intend to rely. Measurements or distances referred to are approximately only. We have not carried out a survey or tested the services, appliances or specific fittings.

33 New Cavendish Street
London,
W1G 9TS

020 7486 4111
jeremyjames@jeremy-james.co.uk