



**JEREMY JAMES**

**CHARLES FOWLER HOUSE, MARYLEBONE VILLAGE. LONDON W1**



**PRICE**

£485 per week

**FURNINSHINGS**

Furnished/Unfurnished

**DEPOSIT**

£2,910

---

33 New Cavendish Street  
London,  
W1G 9TS

020 7486 4111  
[jeremyjames@jeremy-james.co.uk](mailto:jeremyjames@jeremy-james.co.uk)



# JEREMY JAMES

## CHARLES FOWLER HOUSE, MARYLEBONE VILLAGE. LONDON W1



### DESCRIPTION

This modern one bed property provides spacious accommodation with double reception, double bedroom, separate kitchen and modern bathroom.

It would be ideal for either a couple or single person and is located close to the amenities of Marylebone High Street. London Underground is easily accessible with both Bond Street and Baker Street stations within a 5 minute walk.

### AMENITIES

One Double Bedroom

Wooden Floors

Separate Kitchen

Excellent Location

First Floor

Furnished by Separate Agreement

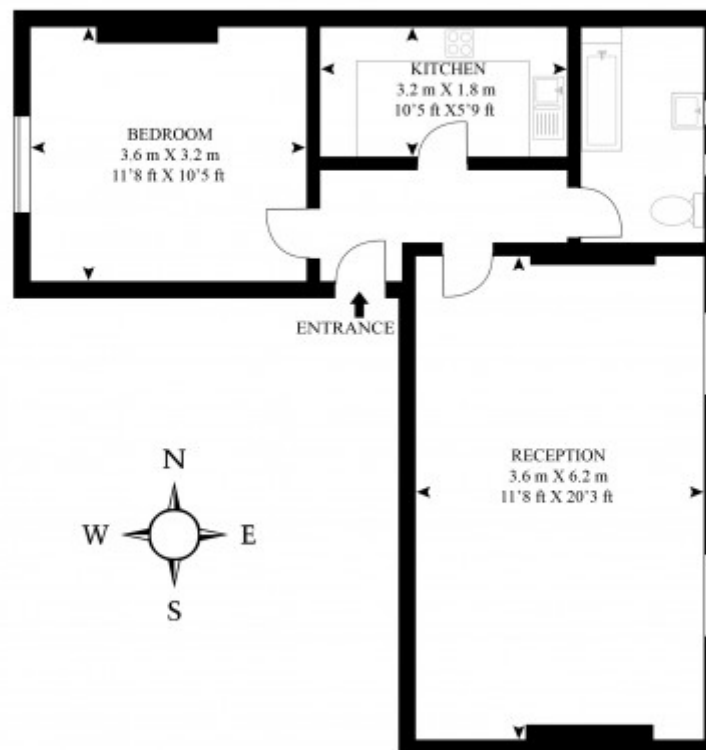


33 New Cavendish Street  
London,  
W1G 9TS

020 7486 4111  
[jeremyjames@jeremy-james.co.uk](mailto:jeremyjames@jeremy-james.co.uk)

### 3 CHARLES FOWLER HOUSE

APPROX GROSS INTERNAL FLOOR AREA 538 SQ.FT (50 SQ.M.)



#### FIRST FLOOR

As Defined by RICS - Code of Measuring Practice  
The Floor - plans are for representation purposes only and  
should be used as such by any prospective client.



# JEREMY JAMES

CHARLES FOWLER HOUSE, MARYLEBONE VILLAGE. LONDON W1



All negotiations are subject to contract. The Agents are not authorised to make or accept any contractual offer unless prior written notification to the contrary has been given on behalf of the client. In no other case whatsoever are the Agents (or any employee or sub-agent) authorised to make or give any representation or warranty on behalf of any party, and whilst information and particulars are given in all good faith intending purchasers and lessees must satisfy themselves independently as to the accuracy of all matters upon which then intend to rely. Measurements or distances referred to are approximately only. We have not carried out a survey or tested the services, appliances or specific fittings.

33 New Cavendish Street  
London,  
W1G 9TS

020 7486 4111

[jeremyjames@jeremy-james.co.uk](mailto:jeremyjames@jeremy-james.co.uk)