



**JEREMY JAMES**

**PORTLAND PLACE, MARYLEBONE VILLAGE, LONDON W1**



**PRICE**  
£895,000

**TENURE**  
Leasehold

---

33 New Cavendish Street  
London,  
W1G 9TS  
020 7486 4111

[jeremyjames@jeremy-james.co.uk](mailto:jeremyjames@jeremy-james.co.uk)



# JEREMY JAMES

## PORTLAND PLACE, MARYLEBONE VILLAGE, LONDON W1



### DESCRIPTION

The apartment is arranged on the first floor of this popular mansion block located in the heart of Marylebone Village.

Accommodation comprises; Entrance hall, Reception room, Two bedrooms, Small study, One ensuite shower room, Second bathroom, Separate cloakroom and Kitchen.

### AMENITIES

Interior designed  
Popular period mansion  
Long lease  
Porterage  
Intercom  
Two passenger lifts

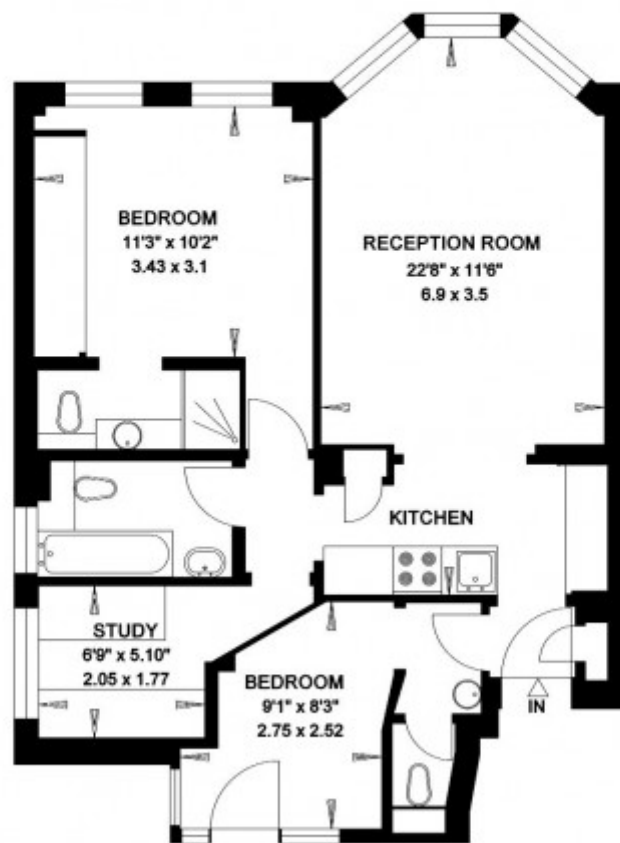
33 New Cavendish Street  
London,  
W1G 9TS

020 7486 4111  
[jeremyjames@jeremy-james.co.uk](mailto:jeremyjames@jeremy-james.co.uk)



**PORTLAND PLACE  
LONDON W1**

Gross Internal Area = 60 sq. metres  
650 sq. feet

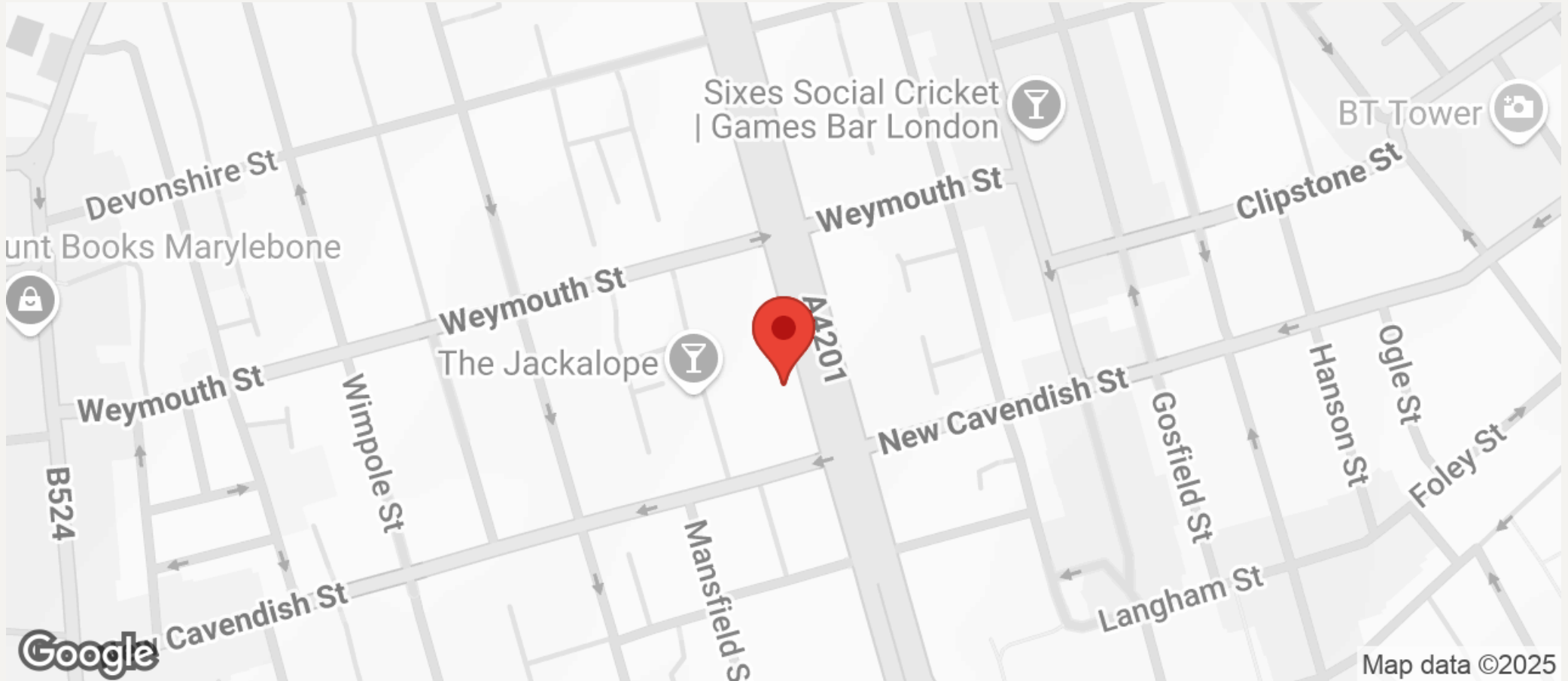


FIRST FLOOR



# JEREMY JAMES

## PORTLAND PLACE, MARYLEBONE VILLAGE, LONDON W1



All negotiations are subject to contract. The Agents are not authorised to make or accept any contractual offer unless prior written notification to the contrary has been given on behalf of the client. In no other case whatsoever are the Agents (or any employee or sub-agent) authorised to make or give any representation or warranty on behalf of any party, and whilst information and particulars are given in all good faith intending purchasers and lessees must satisfy themselves independently as to the accuracy of all matters upon which then intend to rely. Measurements or distances referred to are approximately only. We have not carried out a survey or tested the services, appliances or specific fittings.

33 New Cavendish Street  
London,  
W1G 9TS

020 7486 4111

[jeremyjames@jeremy-james.co.uk](mailto:jeremyjames@jeremy-james.co.uk)