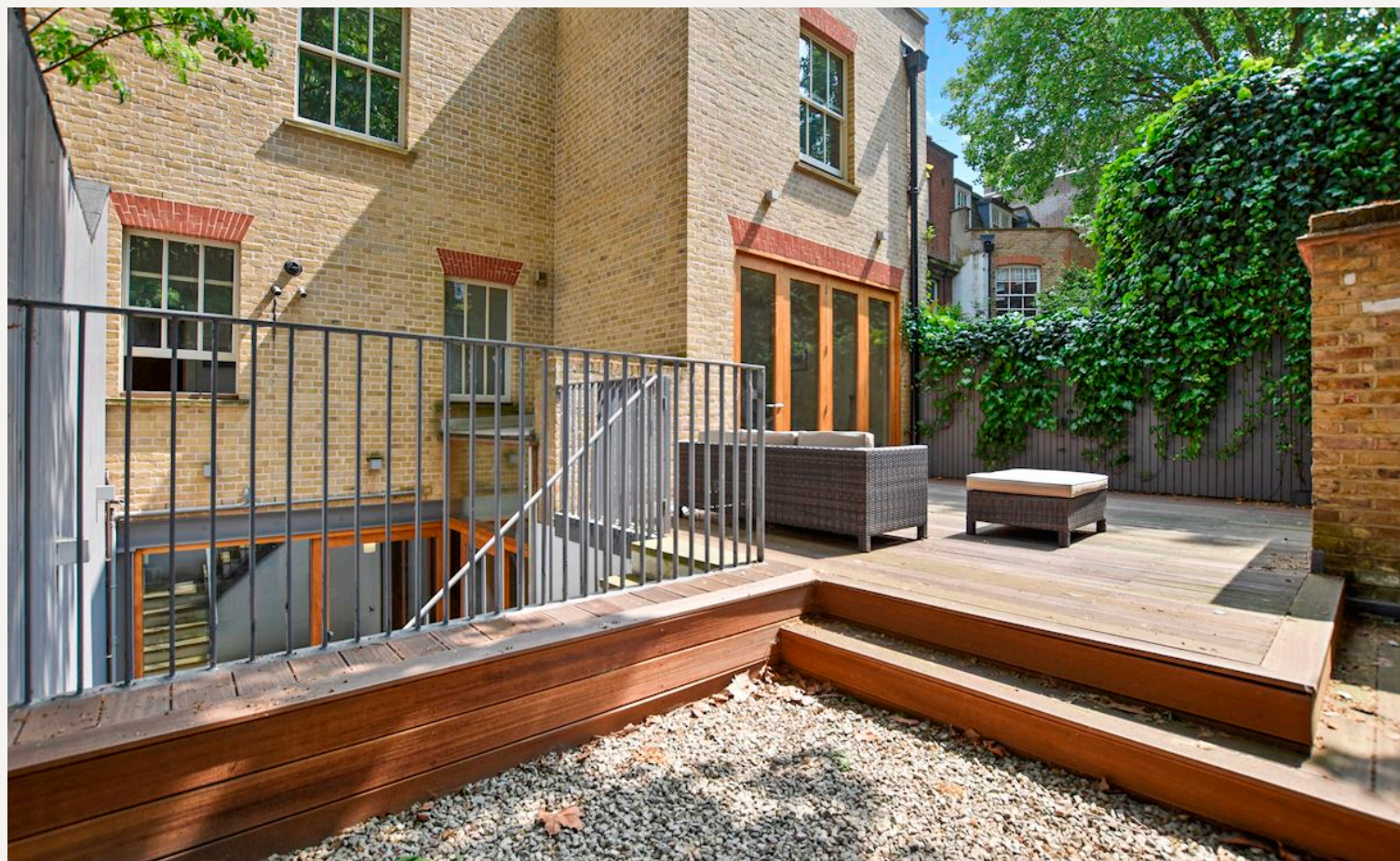




JEREMY JAMES

WIGMORE PLACE, MARYLEBONE VILLAGE, LONDON W1



PRICE

£2,950 per week

FURNINSHINGS

Unfurnished

DEPOSIT

£17,700

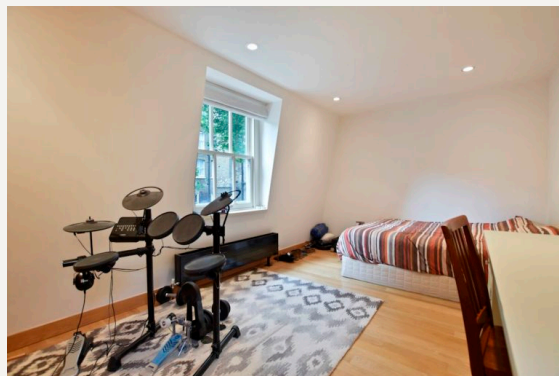
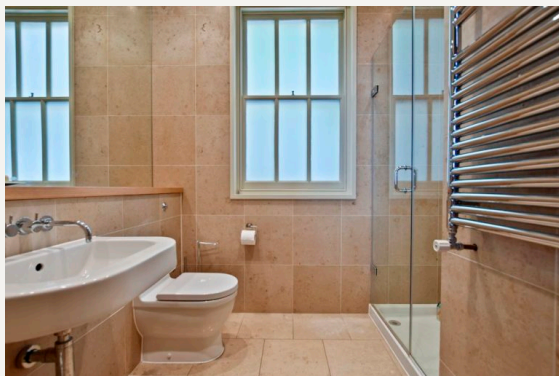
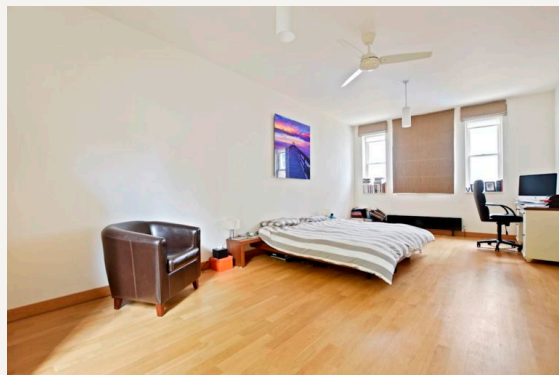
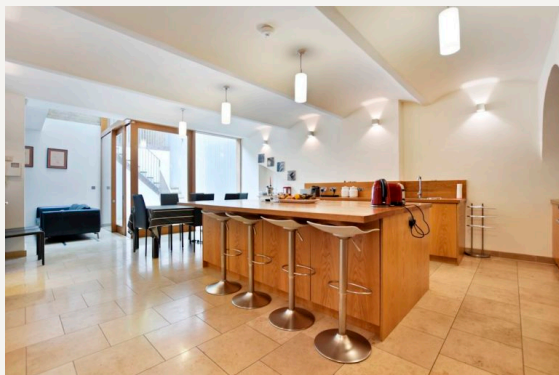
33 New Cavendish Street
London,
W1G 9TS

020 7486 4111
jeremyjames@jeremy-james.co.uk



JEREMY JAMES

WIGMORE PLACE, MARYLEBONE VILLAGE, LONDON W1



DESCRIPTION

The property comprises of:

Lower ground floor: Large fully-fitted kitchen/ breakfast room with access to Garden Utility room Guest cloakroom

Ground floor: Reception hall; Dining room with French doors to garden; Shower room/ guest cloakroom and Garage

First floor: Reception room; Master bedroom with en-suite bathroom; Study/ bedroom

Second floor: Three double bedrooms, all with fitted wardrobes; Bathroom and further Shower room

AMENITIES

Refurbished Mews House

Approx. 3121 sq ft

Beautifully Refurbished Interiors

Contemporary Kitchen and Bathrooms

Hard Wood Floors

Arranged over Four Floors

Good Natural Light

Generous Storage Throughout

Close to Bond Street Underground Station

Unfurnished

33 New Cavendish Street
London,
W1G 9TS

020 7486 4111
jeremyjames@jeremy-james.co.uk



JEREMY JAMES

WIGMORE PLACE, MARYLEBONE VILLAGE, LONDON W1



All negotiations are subject to contract. The Agents are not authorised to make or accept any contractual offer unless prior written notification to the contrary has been given on behalf of the client. In no other case whatsoever are the Agents (or any employee or sub-agent) authorised to make or give any representation or warranty on behalf of any party, and whilst information and particulars are given in all good faith intending purchasers and lessees must satisfy themselves independently as to the accuracy of all matters upon which then intend to rely. Measurements or distances referred to are approximately only. We have not carried out a survey or tested the services, appliances or specific fittings.

33 New Cavendish Street
London,
W1G 9TS

020 7486 4111

jeremyjames@jeremy-james.co.uk