



**JEREMY JAMES**

**KATHLEEN HOUSE, MARYLEBONE VILLAGE. LONDON W1U**



**PRICE**

£550 per week

**FURNINSHINGS**

Furnished/Unfurnished

**DEPOSIT**

£3,300

33 New Cavendish Street  
London,  
W1G 9TS

020 7486 4111  
[jeremyjames@jeremy-james.co.uk](mailto:jeremyjames@jeremy-james.co.uk)



# JEREMY JAMES

## KATHLEEN HOUSE, MARYLEBONE VILLAGE. LONDON W1U



### DESCRIPTION

This bright and spacious two bedroom flat provides comfortable living space for either a couple or two sharers.

Accommodation comprises of two double bedrooms, large reception with open plan kitchen, separate bathroom, and a private patio.

### AMENITIES

Large Reception

Two Double Bedrooms

Private Patio

Quiet Location

Furnished by Separate Agreement

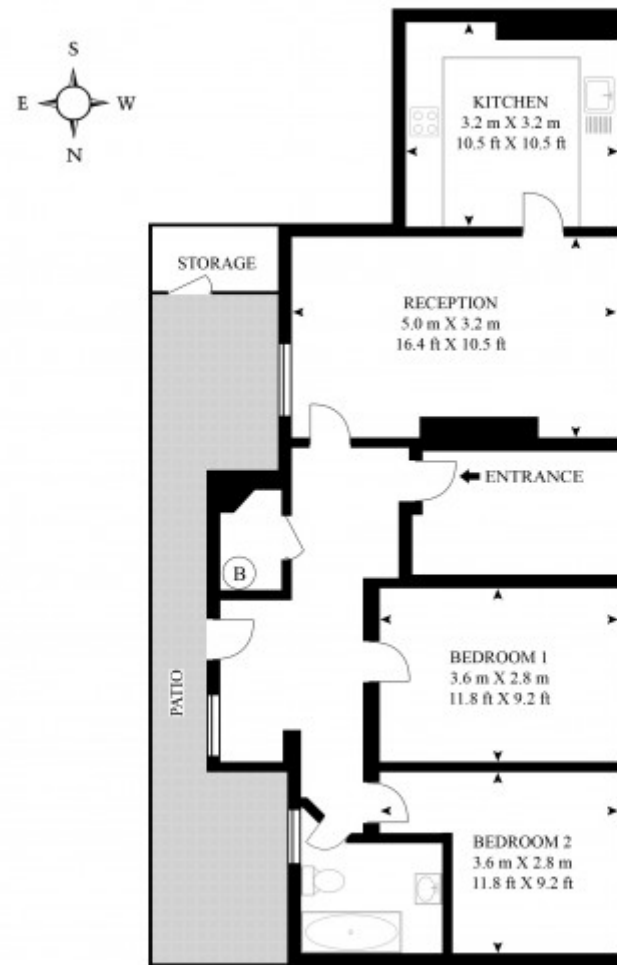
---

33 New Cavendish Street  
London,  
W1G 9TS

020 7486 4111

[jeremyjames@jeremy-james.co.uk](mailto:jeremyjames@jeremy-james.co.uk)

**FLAT 1, KATHLEEN HOUSE, GROTTO PASSAGE**  
APPROXIMATE GROSS INTERNAL FLOOR AREA 678 SQ.FT (63 SQ.M)



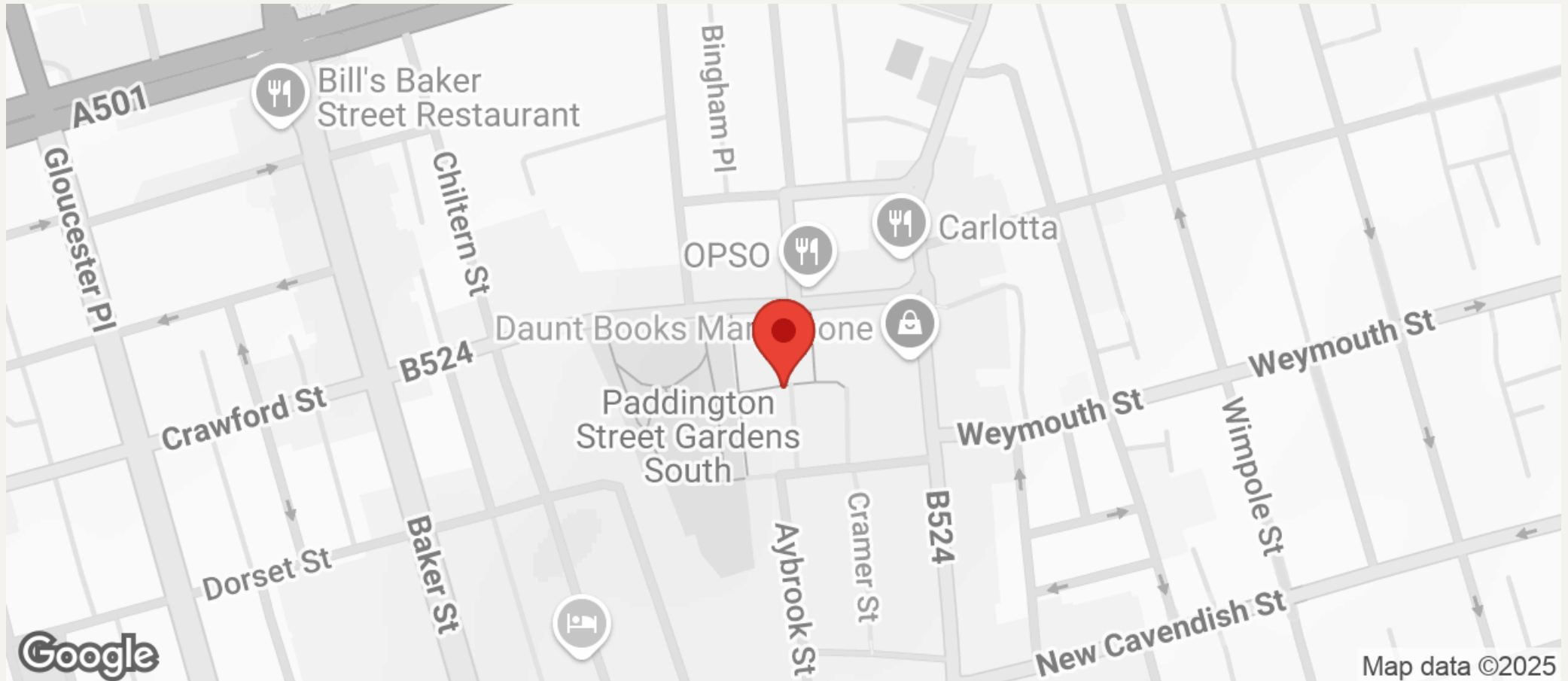
**LOWER GROUND FLOOR**

Please Note: This Floor Plan is for Representative Purposes Only.  
All clients and prospective buyers should use this Floor Plan  
for such purposes.



JEREMY JAMES

KATHLEEN HOUSE, MARYLEBONE VILLAGE. LONDON W1U



All negotiations are subject to contract. The Agents are not authorised to make or accept any contractual offer unless prior written notification to the contrary has been given on behalf of the client. In no other case whatsoever are the Agents (or any employee or sub-agent) authorised to make or give any representation or warranty on behalf of any party, and whilst information and particulars are given in all good faith intending purchasers and lessees must satisfy themselves independently as to the accuracy of all matters upon which then intend to rely. Measurements or distances referred to are approximately only. We have not carried out a survey or tested the services, appliances or specific fittings.

33 New Cavendish Street  
London,  
W1G 9TS

020 7486 4111

[jeremyjames@jeremy-james.co.uk](mailto:jeremyjames@jeremy-james.co.uk)