



JEREMY JAMES

QUEEN ANNE STREET, MARYLEBONE VILLAGE, LONDON W1



PRICE
£1,695,000

TENURE
Leasehold



JEREMY JAMES

QUEEN ANNE STREET, MARYLEBONE VILLAGE, LONDON W1



DESCRIPTION

The apartment is located on the ground floor and the gross internal area of the apartment is 1774 sq.ft (164.80 sq m).

Both Oxford Circus and Bond Street underground stations are also nearby.

Medical Licence is available subject to Landlords consent.

AMENITIES

Underground garage space

In the heart of Marylebone Village

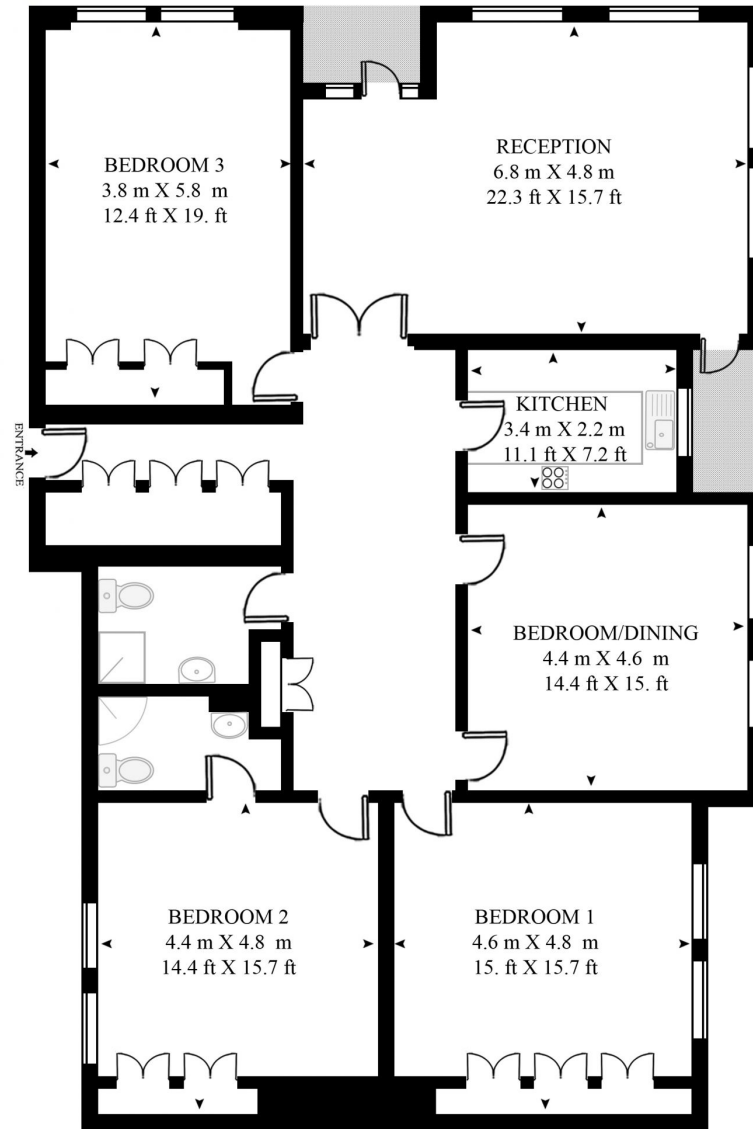
Central heating

Resident porter

Air conditioning

QUEEN ANNE STREET

APPROXIMATE GROSS INTERNAL FLOOR AREA 1774 SQ.FT (164.8 SQ.M)



UPPER GROUND FLOOR



This floor plan has been defined by the RICS Code of Measurement. This floor plan and all others are for approximate representative purposes only and upon usage is agreed to as such by the client.

WWW: hdvirtualart.com | TEL: 0207 947 4014 | EMAIL: info@hdvirtualart.com



JEREMY JAMES

QUEEN ANNE STREET, MARYLEBONE VILLAGE, LONDON W1



All negotiations are subject to contract. The Agents are not authorised to make or accept any contractual offer unless prior written notification to the contrary has been given on behalf of the client. In no other case whatsoever are the Agents (or any employee or sub-agent) authorised to make or give any representation or warranty on behalf of any party, and whilst information and particulars are given in all good faith intending purchasers and lessees must satisfy themselves independently as to the accuracy of all matters upon which they intend to rely. Measurements or distances referred to are approximately only. We have not carried out a survey or tested the services, appliances or specific fittings.

33 New Cavendish Street
London,
W1G 9TS

020 7486 4111

jeremyjames@jeremy-james.co.uk