



JEREMY JAMES

MARYLEBONE STREET, MARYLEBONE VILLAGE, LONDON W1



PRICE

£775 per week

FURNINSHINGS

Furnished

DEPOSIT

£3,875

LOCAL AUTHORITY

City of Westminster

COUNCIL TAX BAND

F

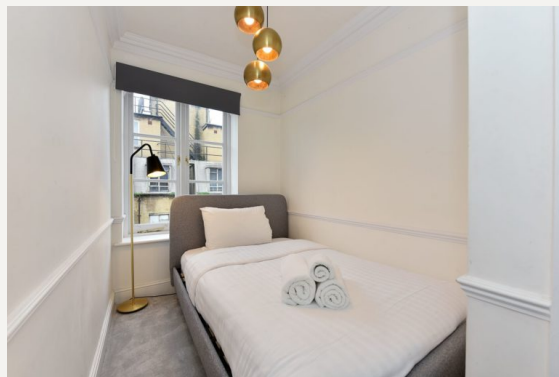
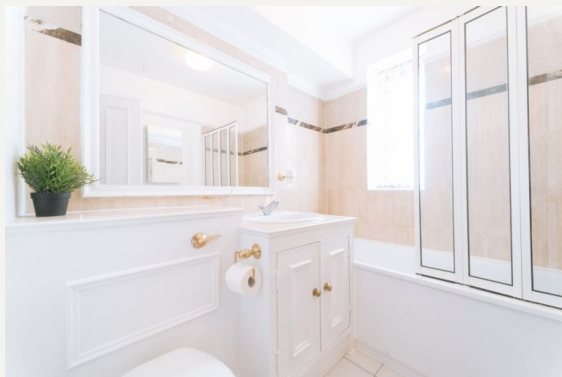
33 New Cavendish Street
London,
W1G 9TS

020 7486 4111
jeremyjames@jeremy-james.co.uk



JEREMY JAMES

MARYLEBONE STREET, MARYLEBONE VILLAGE, LONDON W1



DESCRIPTION

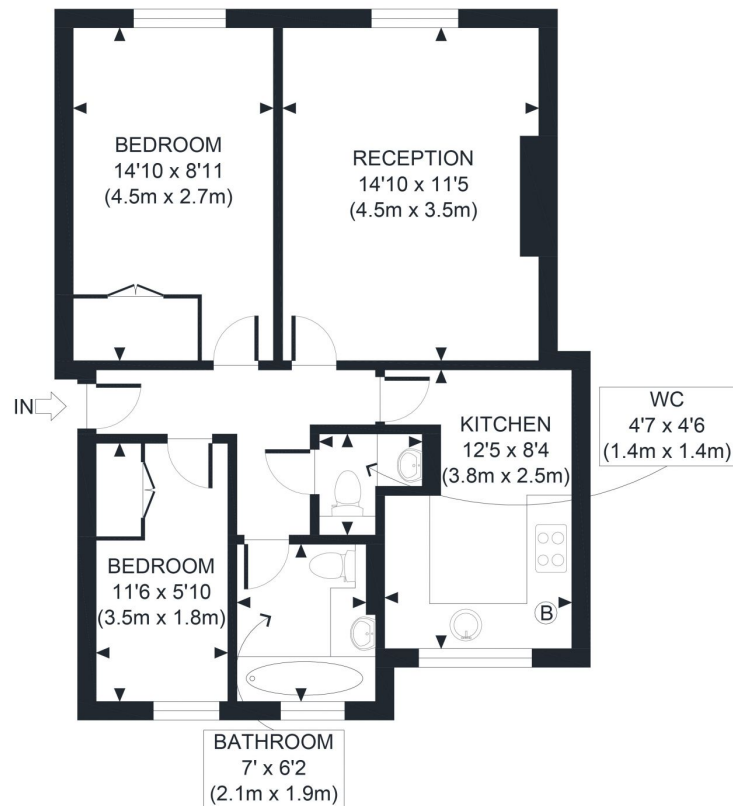
The building is situated moments from popular Marylebone High Street with its array of shops, restaurants, cafes and exclusive boutiques. The building benefits from a communal garden and daytime caretaker. Bond Street (new Elizabeth Line) and Baker Street underground stations are within close proximity, with the open spaces of Regents Park also nearby.

AMENITIES

Two Bedrooms
Access to communal gardens
Caretaker
Furnished
Passenger Lift
EPC Rating C

33 New Cavendish Street
London,
W1G 9TS

020 7486 4111
jeremyjames@jeremy-james.co.uk



FOURTH FLOOR
GROSS INTERNAL
FLOOR AREA 609 SQ FT

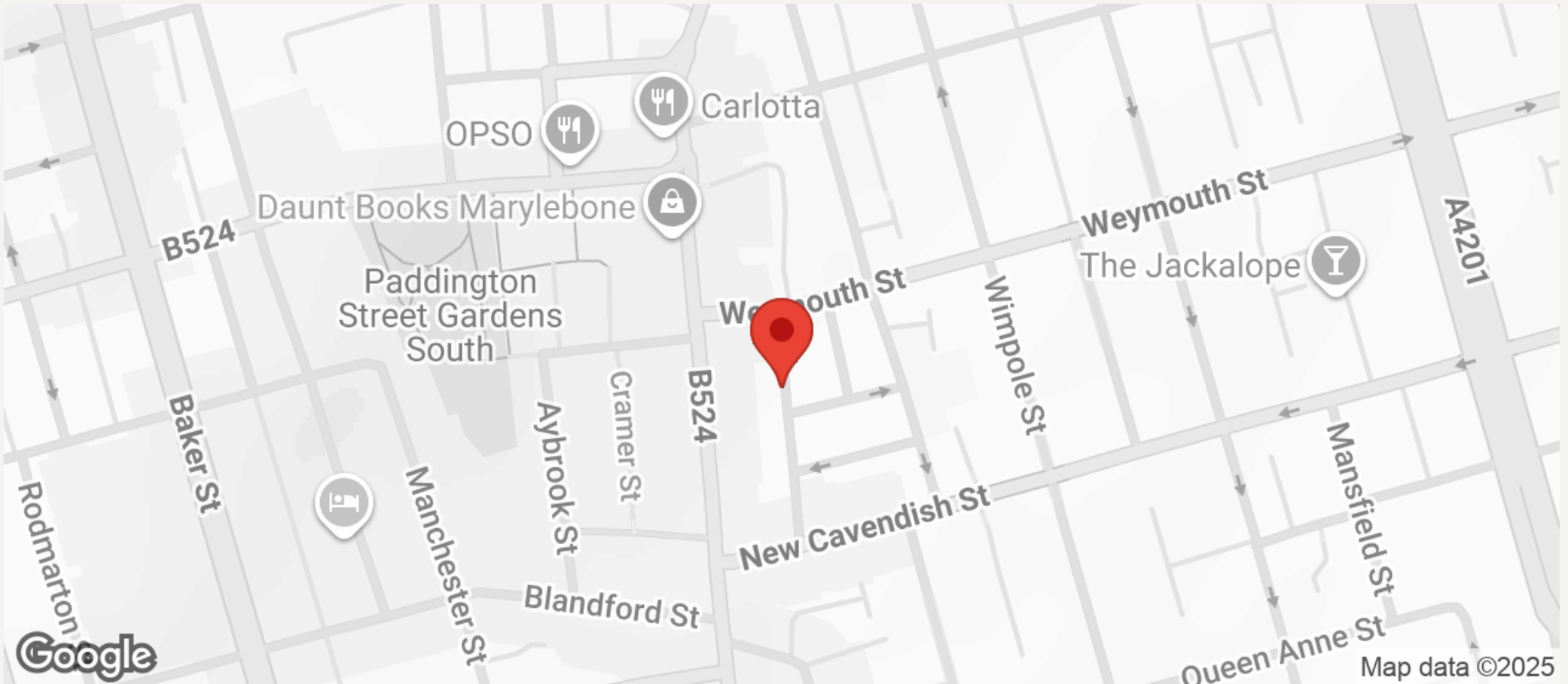
APPROX. GROSS INTERNAL FLOOR AREA 609 SQ FT / 57 SQM

Disclaimer: Floor plan measurements are approximate and are for illustrative purposes only. While we do not doubt the floor plan accuracy and completeness, you or your advisors should conduct a careful, independent investigation of the property in respect of monetary valuation



JEREMY JAMES

MARYLEBONE STREET, MARYLEBONE VILLAGE, LONDON W1



All negotiations are subject to contract. The Agents are not authorised to make or accept any contractual offer unless prior written notification to the contrary has been given on behalf of the client. In no other case whatsoever are the Agents (or any employee or sub-agent) authorised to make or give any representation or warranty on behalf of any party, and whilst information and particulars are given in all good faith intending purchasers and lessees must satisfy themselves independently as to the accuracy of all matters upon which then intend to rely. Measurements or distances referred to are approximately only. We have not carried out a survey or tested the services, appliances or specific fittings.

33 New Cavendish Street
London,
W1G 9TS

020 7486 4111

jeremyjames@jeremy-james.co.uk