



JEREMY JAMES

BULSTRODE STREET, MARYLEBONE VILLAGE LONDON W1



PRICE
£650,000

TENURE
Share of Freehold

33 New Cavendish Street
London,
W1G 9TS

020 7486 4111
jeremyjames@jeremy-james.co.uk



JEREMY JAMES

BULSTRODE STREET, MARYLEBONE VILLAGE LONDON W1



DESCRIPTION

The apartment is situated on the first floor approximately 422 sq ft (39.2 sq m). This apartment has been refurbished to high standards and comprises of entrance hall, open plan kitchen/reception room, bedroom with connecting dressing room.

Bulstrode Street is positioned in the Southern end of Marylebone High Street. Bond Street and Oxford Circus underground stations together with access to the A40/M40 are within close proximity. The open spaces of Regent Park are also nearby.

AMENITIES

First Floor

One Bedroom

One Bathroom

Council Tax Band F

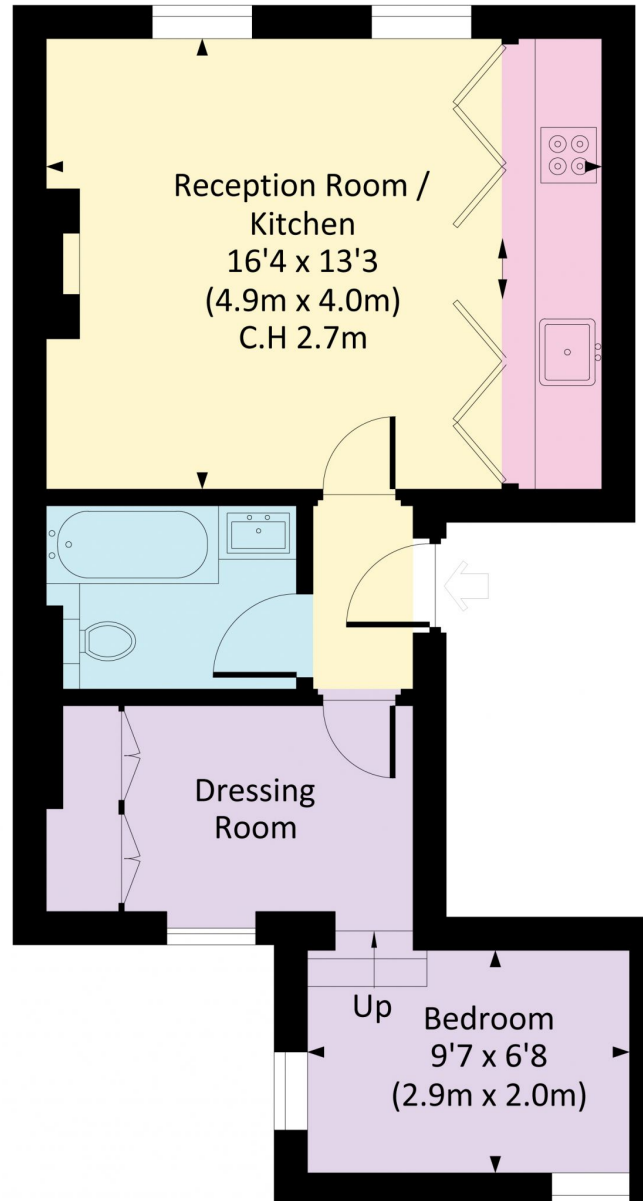
EPC: D

Share of freehold

In the heart of Marylebone Village

BULSTRODE STREET, W1U

Approx. gross internal area
422 Sq Ft. / 39.2 Sq M.



FIRST FLOOR

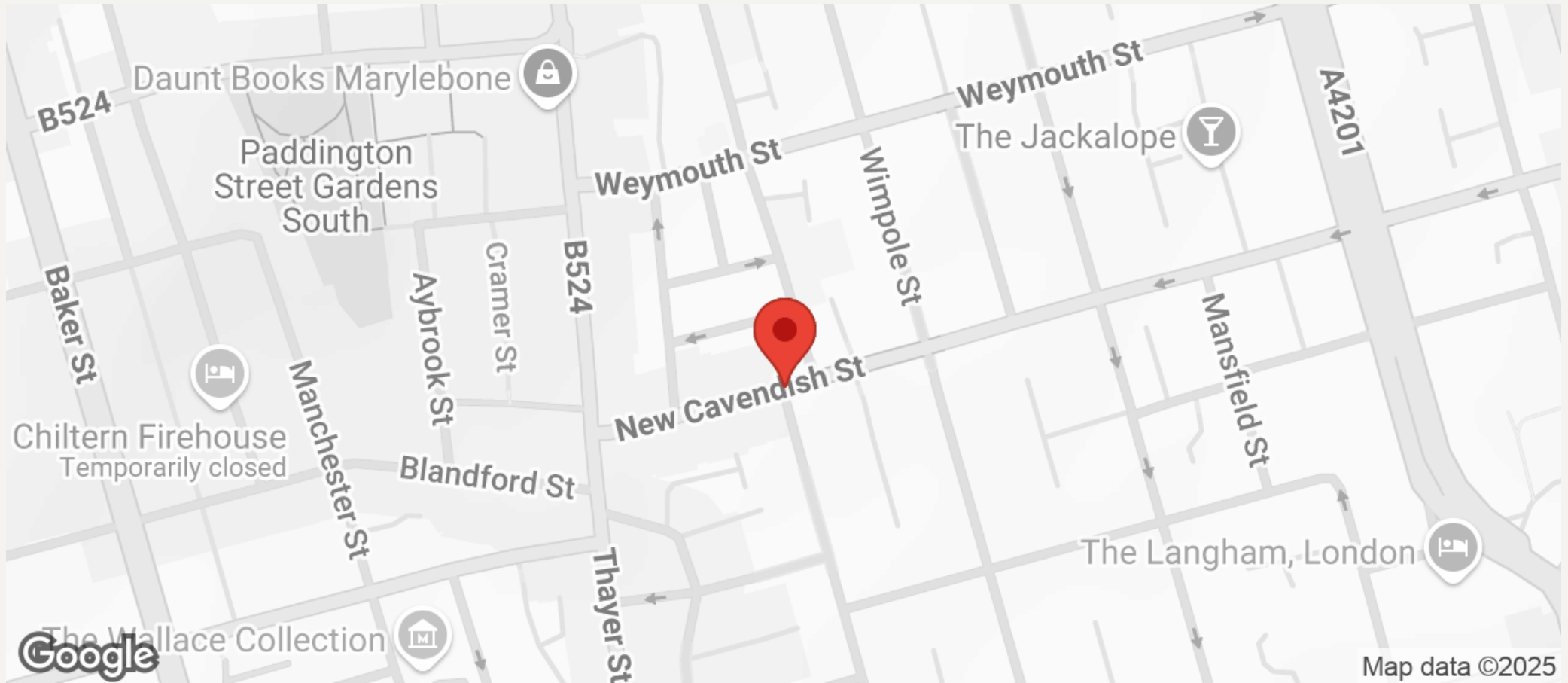


All measurements have been made in accordance with RICS code of Measuring Practice which are approximate only and only for illustrative purposes. For the avoidance of doubt, Dowling Jones Design shall not be liable for any reliance on these measurements. © 2022 www.dowlingjones.com 020 7610 9933



JEREMY JAMES

BULSTRODE STREET, MARYLEBONE VILLAGE LONDON W1



All negotiations are subject to contract. The Agents are not authorised to make or accept any contractual offer unless prior written notification to the contrary has been given on behalf of the client. In no other case whatsoever are the Agents (or any employee or sub-agent) authorised to make or give any representation or warranty on behalf of any party, and whilst information and particulars are given in all good faith intending purchasers and lessees must satisfy themselves independently as to the accuracy of all matters upon which then intend to rely. Measurements or distances referred to are approximately only. We have not carried out a survey or tested the services, appliances or specific fittings.

33 New Cavendish Street
London,
W1G 9TS

020 7486 4111
jeremyjames@jeremy-james.co.uk