



JEREMY JAMES

MONTAGU MANSIONS, MARYLEBONE, LONDON, W1



PRICE

£1,100,000

TENURE

Freehold

33 New Cavendish Street
London,
W1G 9TS

020 7486 4111
jeremyjames@jeremy-james.co.uk



JEREMY JAMES

MONTAGU MANSIONS, MARYLEBONE, LONDON, W1



DESCRIPTION

In more detail accommodation comprises Entrance hall with good storage, Large reception with bay window and fireplace, Master bedroom with built in wardrobes and stunning en-suite shower room, Second double bedroom, Bathroom and Kitchen.

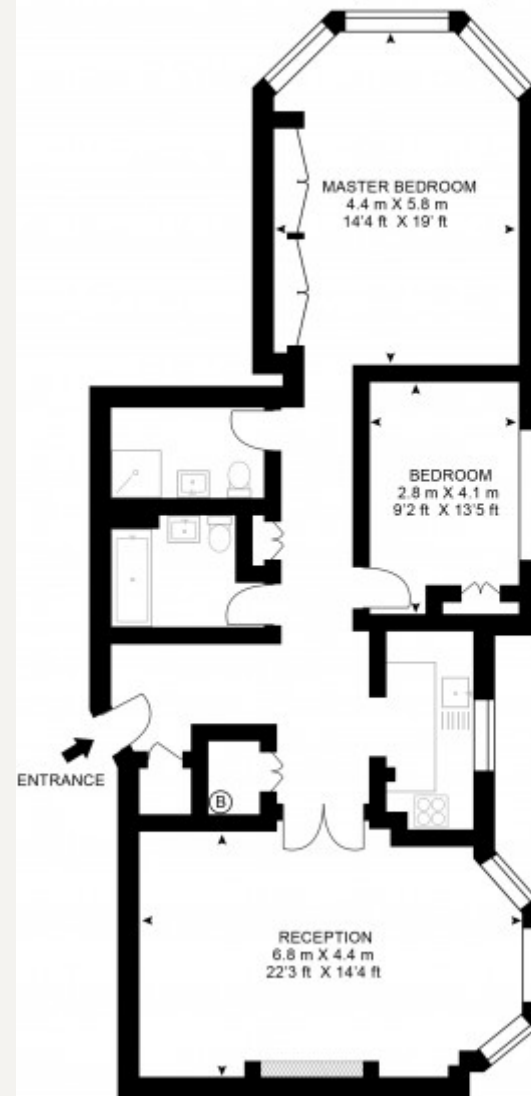
Montagu Mansions is ideally situated for Baker Street underground and Marylebone mainline station with Marylebone High Street also within a close proximity.

AMENITIES

Refurbished to a very high standard
Large principal rooms with bay windows
24 hour porterage
Built-in storage & high ceilings
Raised ground floor



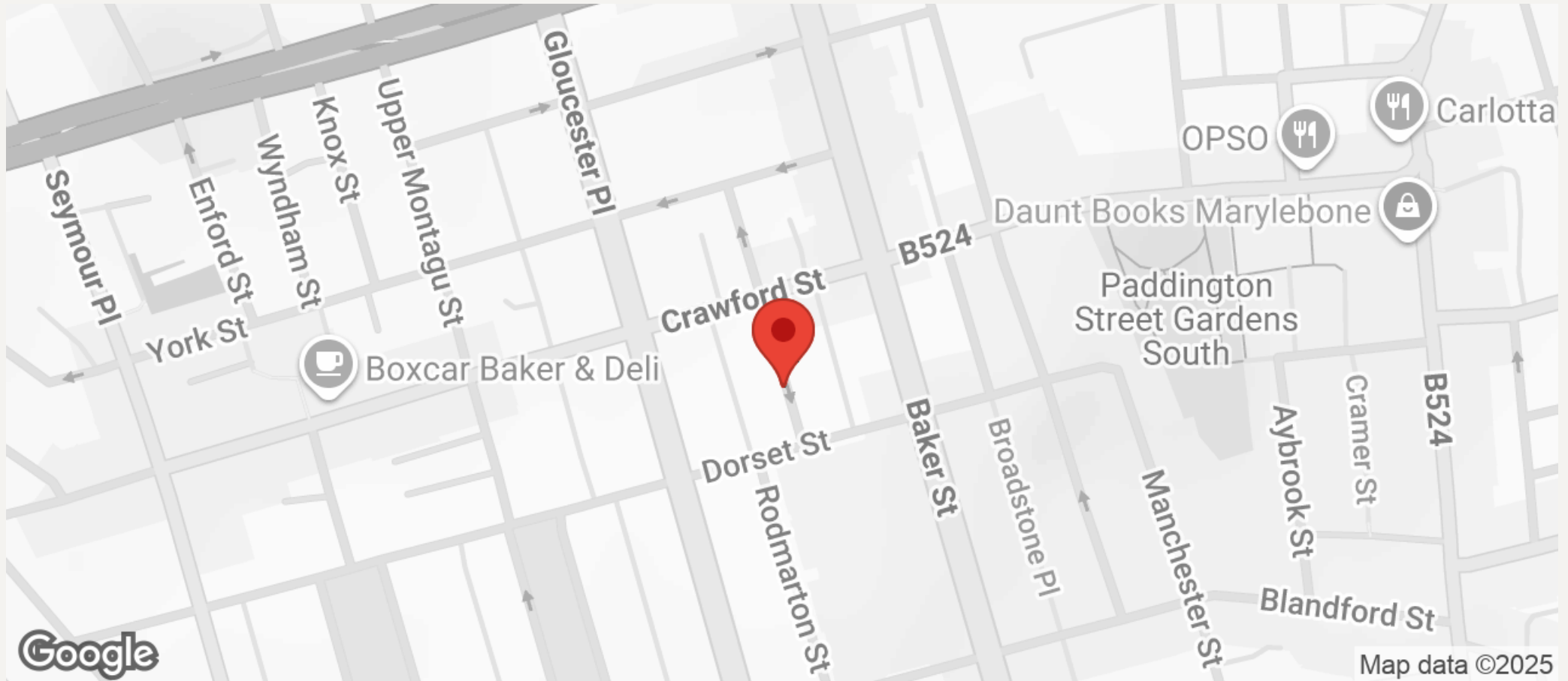
APPROX GROSS INTERNAL FLOOR AREA
1184 SQ.FT (110 SQ.M.)





JEREMY JAMES

MONTAGU MANSIONS, MARYLEBONE, LONDON, W1



All negotiations are subject to contract. The Agents are not authorised to make or accept any contractual offer unless prior written notification to the contrary has been given on behalf of the client. In no other case whatsoever are the Agents (or any employee or sub-agent) authorised to make or give any representation or warranty on behalf of any party, and whilst information and particulars are given in all good faith intending purchasers and lessees must satisfy themselves independently as to the accuracy of all matters upon which then intend to rely. Measurements or distances referred to are approximately only. We have not carried out a survey or tested the services, appliances or specific fittings.

33 New Cavendish Street
London,
W1G 9TS

020 7486 4111
jeremyjames@jeremy-james.co.uk