



# JEREMY JAMES

DEVONSHIRE STREET, MARYLEBONE VILLAGE. LONDON W1



## PRICE

£1,150 per week

## FURNINSHINGS

Furnished

## DEPOSIT

£6,900

33 New Cavendish Street  
London,  
W1G 9TS

020 7486 4111  
[jeremyjames@jeremy-james.co.uk](mailto:jeremyjames@jeremy-james.co.uk)



# JEREMY JAMES

DEVONSHIRE STREET, MARYLEBONE VILLAGE. LONDON W1



## DESCRIPTION

The accommodation comprises of eat-in kitchen, living room, three double bedrooms, family bathroom and guest cloakroom.

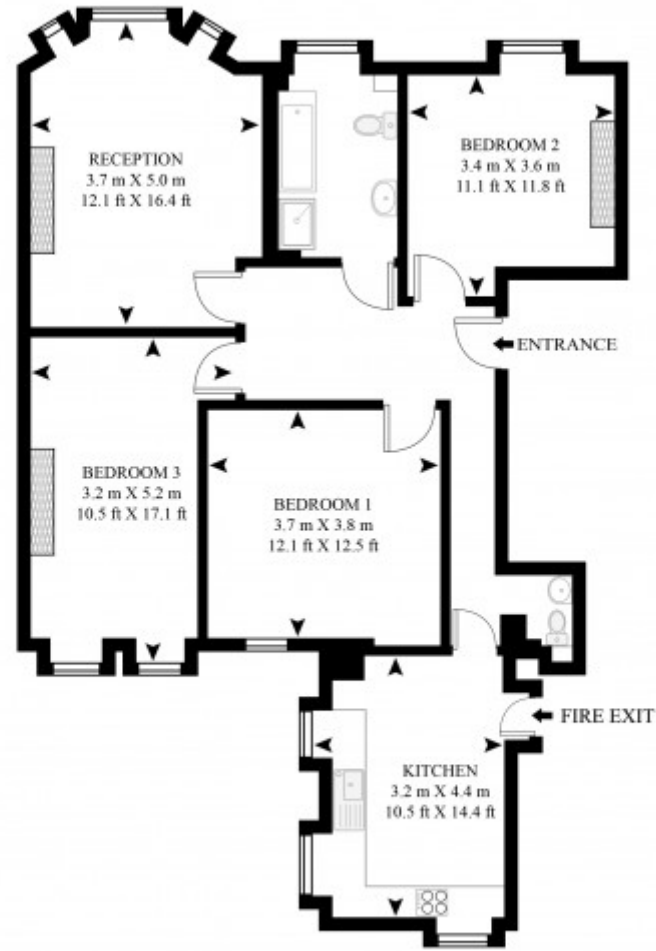
Offering bright and stylish interiors throughout, this property would be ideal for professional sharers or couple.

## AMENITIES

- Three Double Bedrooms
- Newly Refurbished
- Bespoke Fixtures and Fittings
- Fitted Storage
- Wooden Floors Throughout
- First Floor
- Furnished

DEVONSHIRE STREET

APPROXIMATE GROSS INTERNAL FLOOR AREA 920 SQ.FT (85 SQ.M)



FIRST FLOOR

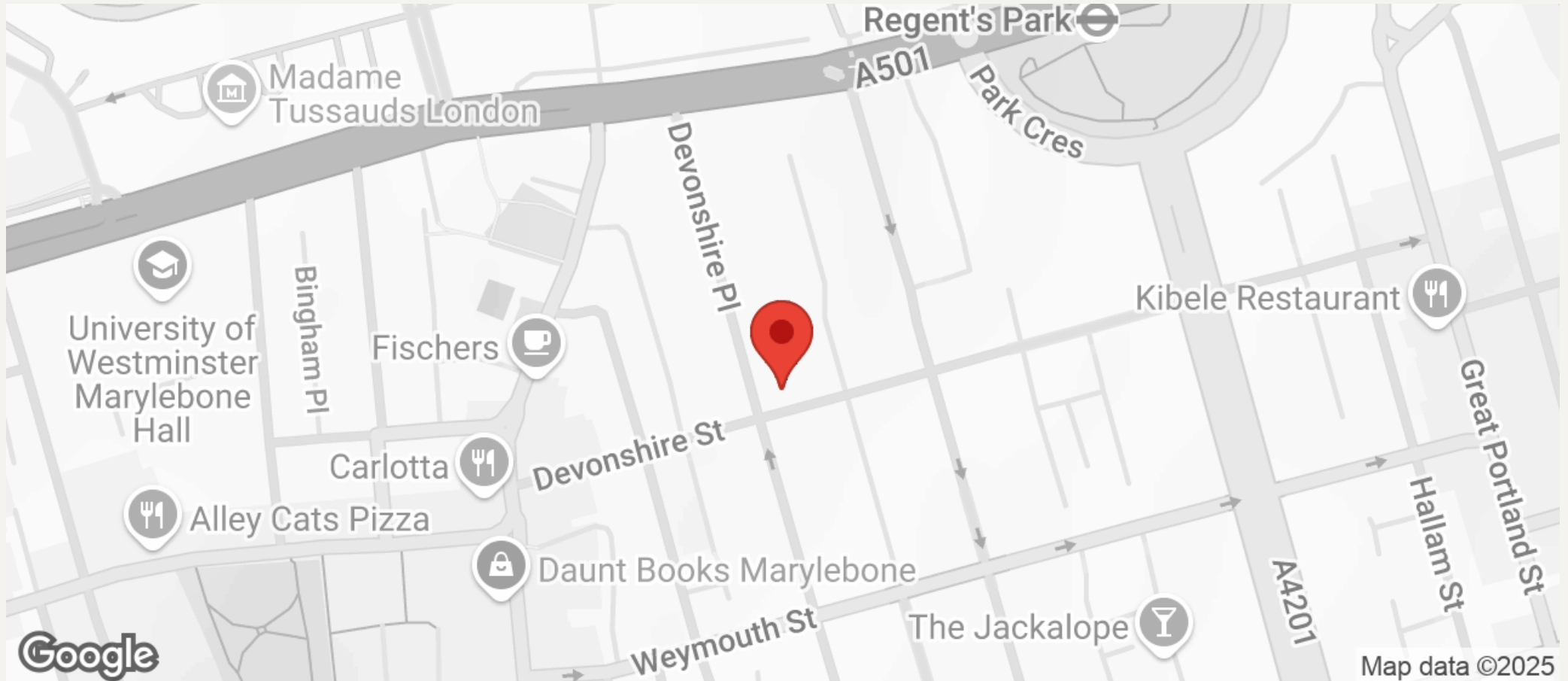


This floor plan has been defined by the RICS Code of Measurement. This floor plan and all others are for approximate representative purposes only and upon usage is agreed to as such by the client.  
WWW: [hdvirtualart.com](http://hdvirtualart.com) | TEL: 0207 923 7300 | EMAIL: [info@hdvirtualart.com](mailto:info@hdvirtualart.com)



# JEREMY JAMES

DEVONSHIRE STREET, MARYLEBONE VILLAGE. LONDON W1



All negotiations are subject to contract. The Agents are not authorised to make or accept any contractual offer unless prior written notification to the contrary has been given on behalf of the client. In no other case whatsoever are the Agents (or any employee or sub-agent) authorised to make or give any representation or warranty on behalf of any party, and whilst information and particulars are given in all good faith intending purchasers and lessees must satisfy themselves independently as to the accuracy of all matters upon which then intend to rely. Measurements or distances referred to are approximately only. We have not carried out a survey or tested the services, appliances or specific fittings.

33 New Cavendish Street  
London,  
W1G 9TS

020 7486 4111

jeremyjames@jeremy-james.co.uk