



# JEREMY JAMES

WELBECK WAY, MARYLEBONE VILLAGE. LONDON W1



## PRICE

£1,500 per week

## FURNINSHINGS

Furnished/Unfurnished

## DEPOSIT

£9,000

---

33 New Cavendish Street  
London,  
W1G 9TS

020 7486 4111  
[jeremyjames@jeremy-james.co.uk](mailto:jeremyjames@jeremy-james.co.uk)



# JEREMY JAMES

WELBECK WAY, MARYLEBONE VILLAGE. LONDON W1



## DESCRIPTION

Accommodation comprises: reception, open-plan kitchen, three double bedrooms all with ample storage and en-suite bathrooms, guest cloakroom and garage. The property is ideally suited for a family or three professional sharers.

## AMENITIES

Newly Refurbished

Mews House

1776 sq ft

Three Bedrooms

Three Bathrooms

Contemporary Finish

Garage

Furnished by Separate Agreement

33 New Cavendish Street  
London,

W1G 9TS

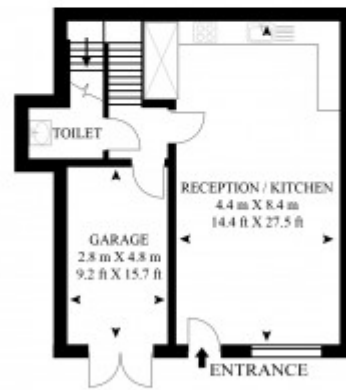
020 7486 4111

[jeremyjames@jeremy-james.co.uk](mailto:jeremyjames@jeremy-james.co.uk)

**16 WELBECK WAY**  
APPROX GROSS INTERNAL FLOOR AREA  
1776 SQ.FT (165.SQ.M.)



SECOND FLOOR



GROUND FLOOR



FIRST FLOOR

As Defined by RICS - Code of Measuring Practice  
The Floor - plans are for representation purposes only and  
should be used as such by any prospective client.



# JEREMY JAMES

WELBECK WAY, MARYLEBONE VILLAGE. LONDON W1



All negotiations are subject to contract. The Agents are not authorised to make or accept any contractual offer unless prior written notification to the contrary has been given on behalf of the client. In no other case whatsoever are the Agents (or any employee or sub-agent) authorised to make or give any representation or warranty on behalf of any party, and whilst information and particulars are given in all good faith intending purchasers and lessees must satisfy themselves independently as to the accuracy of all matters upon which they intend to rely. Measurements or distances referred to are approximately only. We have not carried out a survey or tested the services, appliances or specific fittings.

33 New Cavendish Street  
London,  
W1G 9TS

020 7486 4111

[jeremyjames@jeremy-james.co.uk](mailto:jeremyjames@jeremy-james.co.uk)