



JEREMY JAMES

BENTINCK MEWS, MARYLEBONE VILLAGE, LONDON W1



PRICE

£350 per week

FURNINSHINGS

Furnished

DEPOSIT

£1,750

33 New Cavendish Street
London,
W1G 9TS

020 7486 4111
jeremyjames@jeremy-james.co.uk



JEREMY JAMES

BENTINCK MEWS, MARYLEBONE VILLAGE, LONDON W1



DESCRIPTION

This lovely one bedroom apartment is just moments away from Marylebone High Street with its many popular restaurants, shops, cafes and bars. The flat offers one double bedroom, bathroom (with shower over bath), fitted separate kitchen and lounge. Plenty of storage and natural light.

Both Baker Street and Bond Street Underground Station are within easy walking distance making this an extremely accessible apartment.



AMENITIES

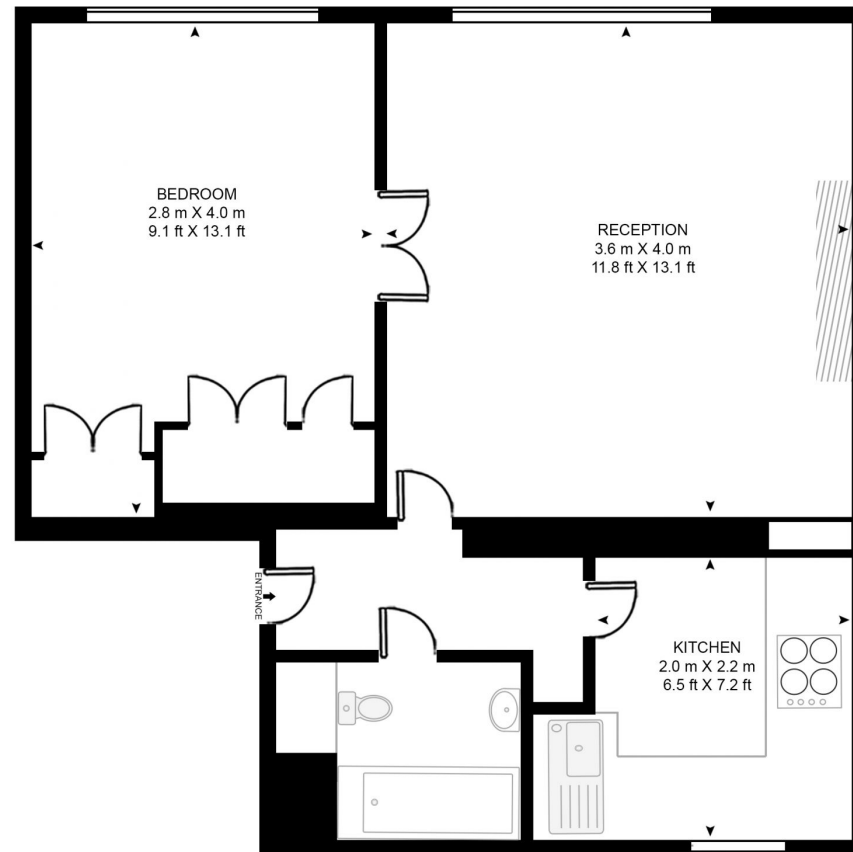
Quiet mews location

Furnished

Energy Rating: D

BENTINCK MEWS

APPROXIMATE GROSS INTERNAL FLOOR AREA 389 SQ.FT (36.2 SQ.M)

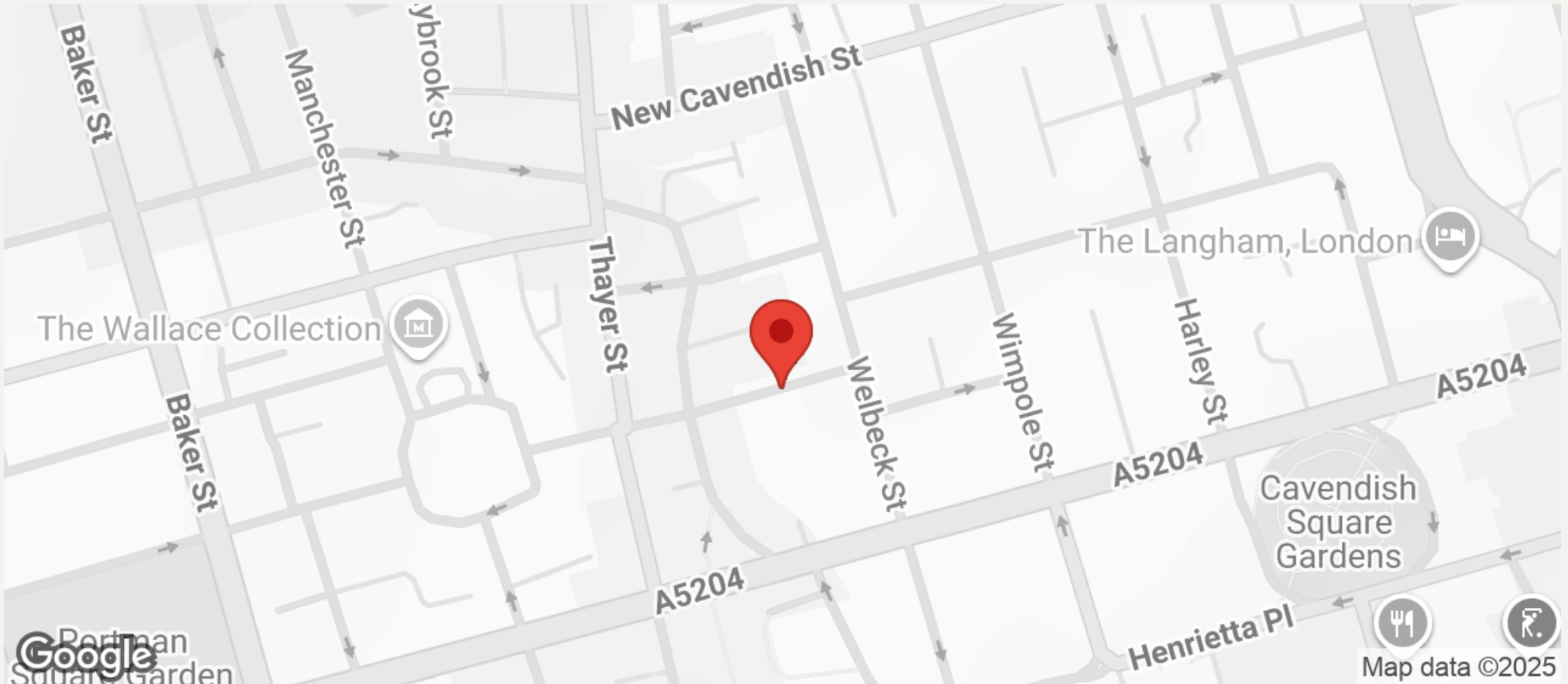


SECOND FLOOR



JEREMY JAMES

BENTINCK MEWS, MARYLEBONE VILLAGE, LONDON W1



All negotiations are subject to contract. The Agents are not authorised to make or accept any contractual offer unless prior written notification to the contrary has been given on behalf of the client. In no other case whatsoever are the Agents (or any employee or sub-agent) authorised to make or give any representation or warranty on behalf of any party, and whilst information and particulars are given in all good faith intending purchasers and lessees must satisfy themselves independently as to the accuracy of all matters upon which then intend to rely. Measurements or distances referred to are approximately only. We have not carried out a survey or tested the services, appliances or specific fittings.

33 New Cavendish Street
London,
W1G 9TS

020 7486 4111
jeremyjames@jeremy-james.co.uk