



**JEREMY JAMES**

**HARLEY STREET, MARYLEBONE, LONDON W1**



**PRICE**

£1,615 per week

**FURNISHINGS**

Furnished/Unfurnished

**DEPOSIT**

£9,690

33 New Cavendish Street  
London,  
W1G 9TS

020 7486 4111  
jeremyjames@jeremy-james.co.uk



# JEREMY JAMES

## HARLEY STREET, MARYLEBONE, LONDON W1



### DESCRIPTION

A newly refurbished 5 bedroom period home situated in the heart of Marylebone. This 5 bedroom house is set over three floors and consists of reception room, separate fully integrated kitchen with dining area, en suite master bedroom with closet space, 4 additional bedrooms, family bathroom and a shower room.

The building is located moments from Marylebone High Street and the open spaces of Regents Park are close by.

### AMENITIES

5 Bedrooms

Moments from Marylebone High Street

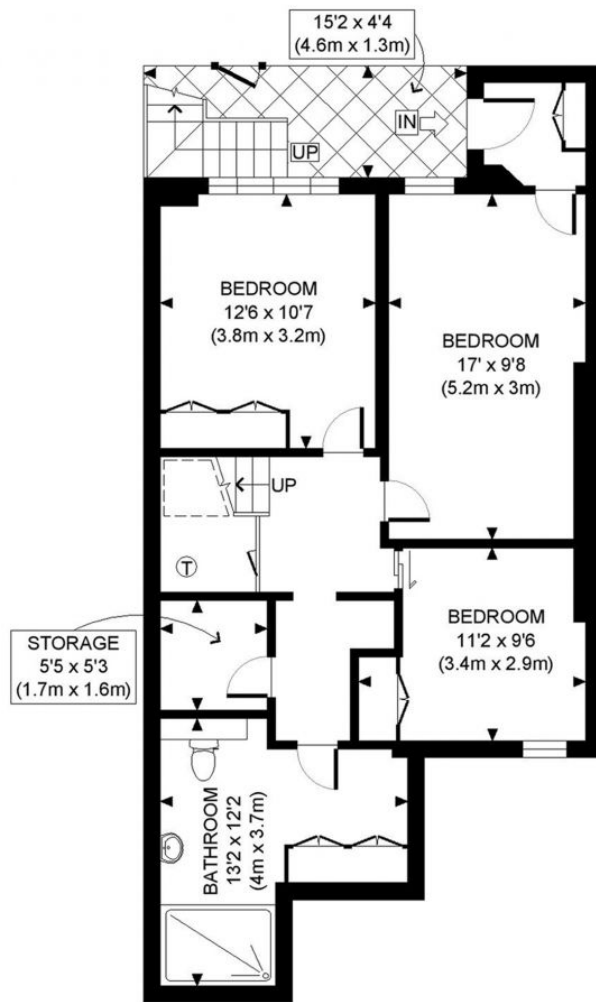
3 bathrooms

33 New Cavendish Street  
London,

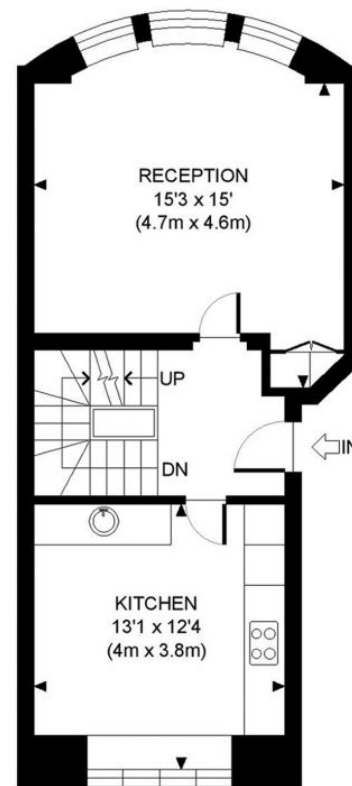
W1G 9TS

020 7486 4111

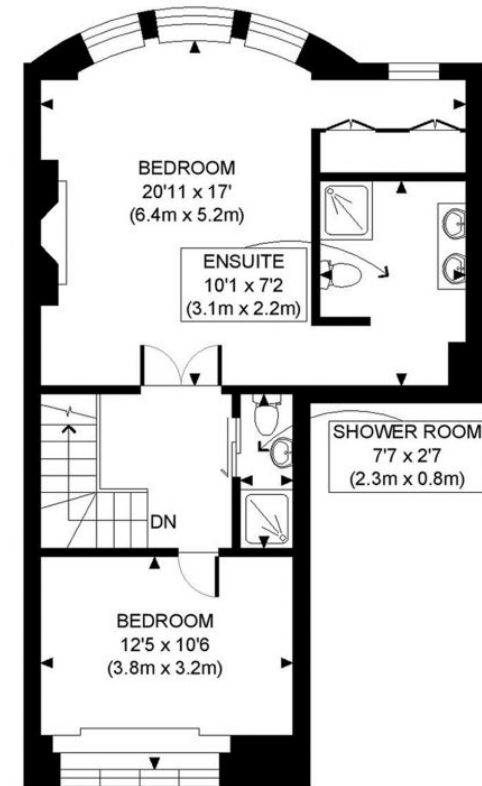
[jeremyjames@jeremy-james.co.uk](mailto:jeremyjames@jeremy-james.co.uk)



LOWER GROUND FLOOR  
GROSS INTERNAL  
FLOOR AREA 704 SQ FT



GROUND FLOOR  
GROSS INTERNAL  
FLOOR AREA 486 SQ FT



FIRST FLOOR  
GROSS INTERNAL  
FLOOR AREA 577 SQ FT

APPROX. GROSS INTERNAL FLOOR AREA: 1767 SQ FT/ 164 SQM

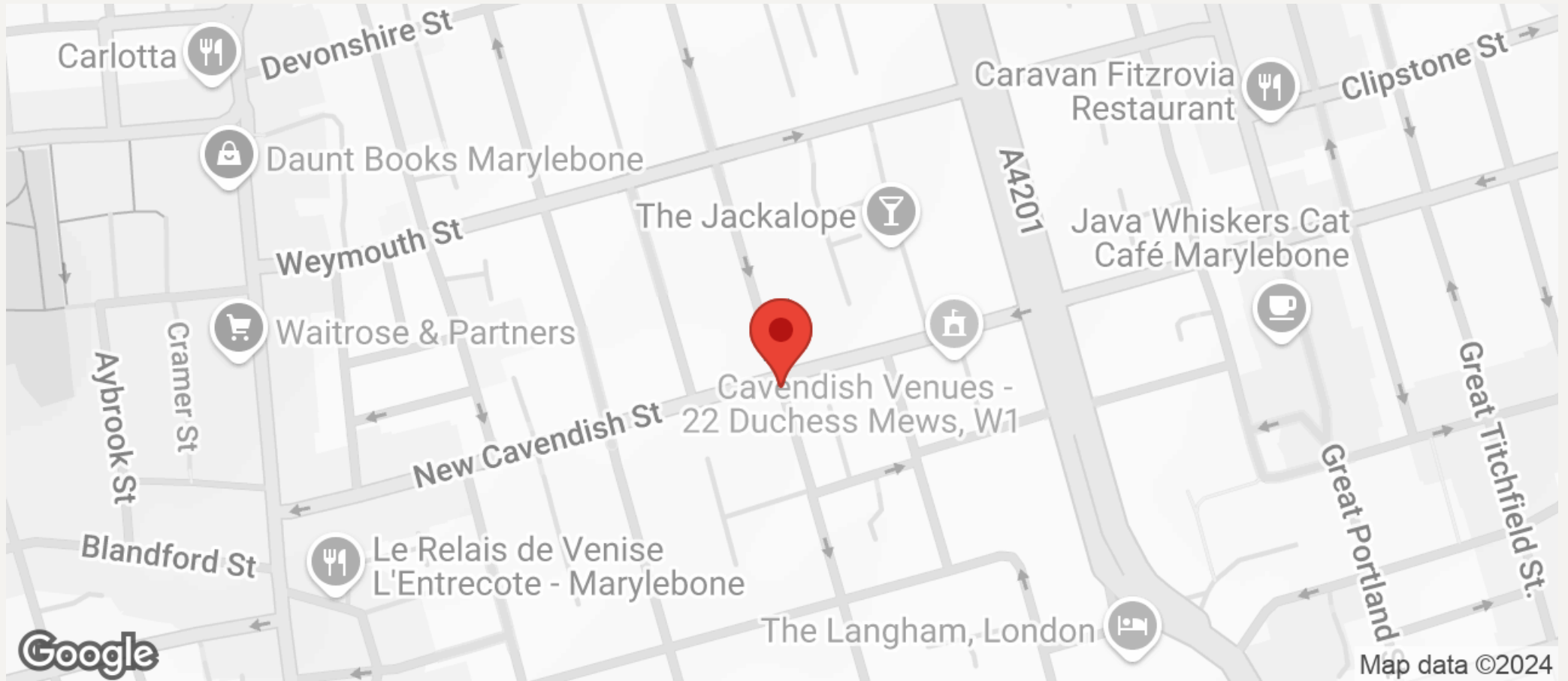
**PROPERTY PHOTO PLANS**.co.uk  
ONE STOP SHOP FOR PROPERTY MARKETING

Whilst every attempt has been made to ensure the accuracy of the floor plan contained here, measurements of the doors, windows, rooms and any other items are approximate and no responsibility is taken for any errors, omissions, or miss-statement. This plan is for illustrative purposes only and should be used as such by any prospective client. The services, systems and appliances shown have not been tested and no guarantee as to the operability or efficiency can be given.



# JEREMY JAMES

HARLEY STREET, MARYLEBONE, LONDON W1



All negotiations are subject to contract. The Agents are not authorised to make or accept any contractual offer unless prior written notification to the contrary has been given on behalf of the client. In no other case whatsoever are the Agents (or any employee or sub-agent) authorised to make or give any representation or warranty on behalf of any party, and whilst information and particulars are given in all good faith intending purchasers and lessees must satisfy themselves independently as to the accuracy of all matters upon which they intend to rely. Measurements or distances referred to are approximately only. We have not carried out a survey or tested the services, appliances or specific fittings.

33 New Cavendish Street  
London,  
W1G 9TS

020 7486 4111

jeremyjames@jeremy-james.co.uk