



**JEREMY JAMES**

**DUCHESS MEWS, MARYLEBONE VILLAGE. LONDON W1**



**PRICE**

£650 per week

**FURNINSHINGS**

Furnished/Unfurnished

**DEPOSIT**

£3,900

---

33 New Cavendish Street  
London,  
W1G 9TS

020 7486 4111  
[jeremyjames@jeremy-james.co.uk](mailto:jeremyjames@jeremy-james.co.uk)



# JEREMY JAMES

## DUCHESS MEWS, MARYLEBONE VILLAGE. LONDON W1



### DESCRIPTION

This two double bedroom, recently renovated first floor mews apartment has been finished to a high standard throughout and benefits from modern appliances, wooden floors and ample storage.

Accommodation comprises of reception room onto modern kitchen, two double bedrooms with ample storage and modern bathroom with shower over bath.

### AMENITIES

Recently Refurbished

Modern Kitchen

First Floor

Two Double Bedrooms

Quiet Mews

Furnished by Separate Agreement



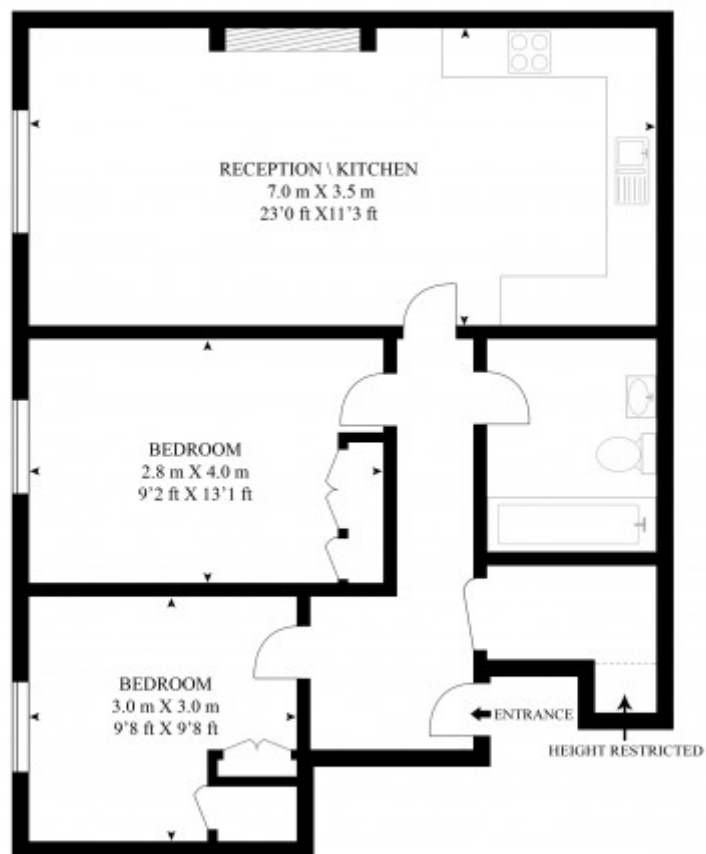
33 New Cavendish Street  
London,  
W1G 9TS

020 7486 4111

[jeremyjames@jeremy-james.co.uk](mailto:jeremyjames@jeremy-james.co.uk)

# FLAT 1, 19 DUCHESS MEWS

APPROX GROSS INTERNAL FLOOR AREA  
645 SQ.FT (60 SQ.M.)

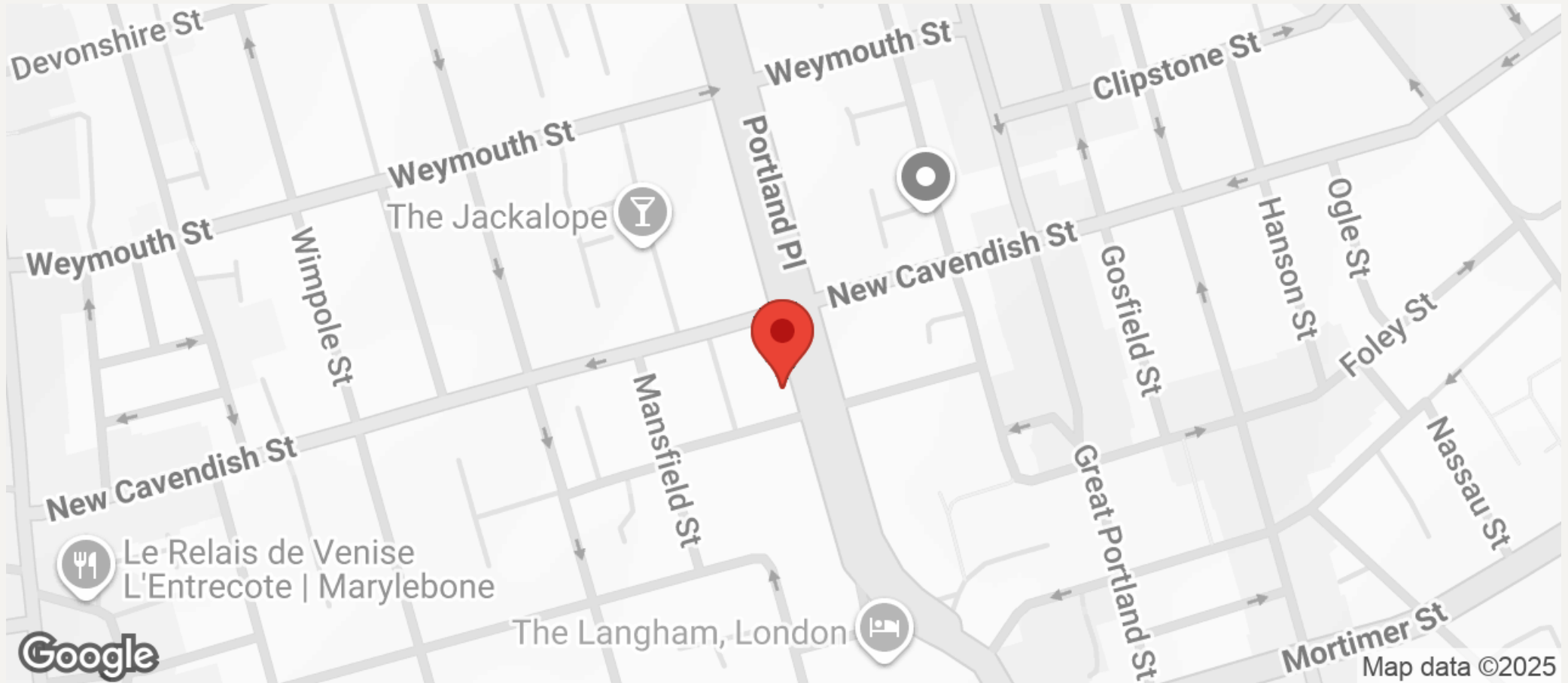


As Defined by RICS - Code of Measuring Practice  
The Floor - plans are for representation purposes only and  
should be used as such by any prospective client.



# JEREMY JAMES

## DUCHESS MEWS, MARYLEBONE VILLAGE. LONDON W1



All negotiations are subject to contract. The Agents are not authorised to make or accept any contractual offer unless prior written notification to the contrary has been given on behalf of the client. In no other case whatsoever are the Agents (or any employee or sub-agent) authorised to make or give any representation or warranty on behalf of any party, and whilst information and particulars are given in all good faith intending purchasers and lessees must satisfy themselves independently as to the accuracy of all matters upon which then intend to rely. Measurements or distances referred to are approximately only. We have not carried out a survey or tested the services, appliances or specific fittings.

33 New Cavendish Street  
London,  
W1G 9TS

020 7486 4111  
[jeremyjames@jeremy-james.co.uk](mailto:jeremyjames@jeremy-james.co.uk)