



# JEREMY JAMES

BULSTRODE STREET, MARYLEBONE VILLAGE. LONDON W1U



## PRICE

£495 per week

## FURNINSHINGS

Furnished/Unfurnished

## DEPOSIT

£2,970

---

33 New Cavendish Street  
London,  
W1G 9TS

020 7486 4111  
jeremyjames@jeremy-james.co.uk



# JEREMY JAMES

## BULSTRODE STREET, MARYLEBONE VILLAGE. LONDON W1U



### DESCRIPTION

Accommodation comprises of spacious reception, eat-in kitchen, generous double bedroom with storage and a smart bathroom. The property further benefits from good natural light and neutral décor throughout.

Located just moments from the boutiques and eateries on Marylebone High Street, and within short walking distance from Bond Street Underground Station.

### AMENITIES

Large One Bedroom Apartment

Period Conversion

656 sq ft

Modern Kitchen and Bathroom

Bright

Good Storage

Moments from Marylebone High Street

Third Floor

Furnished by Separate Agreement

---

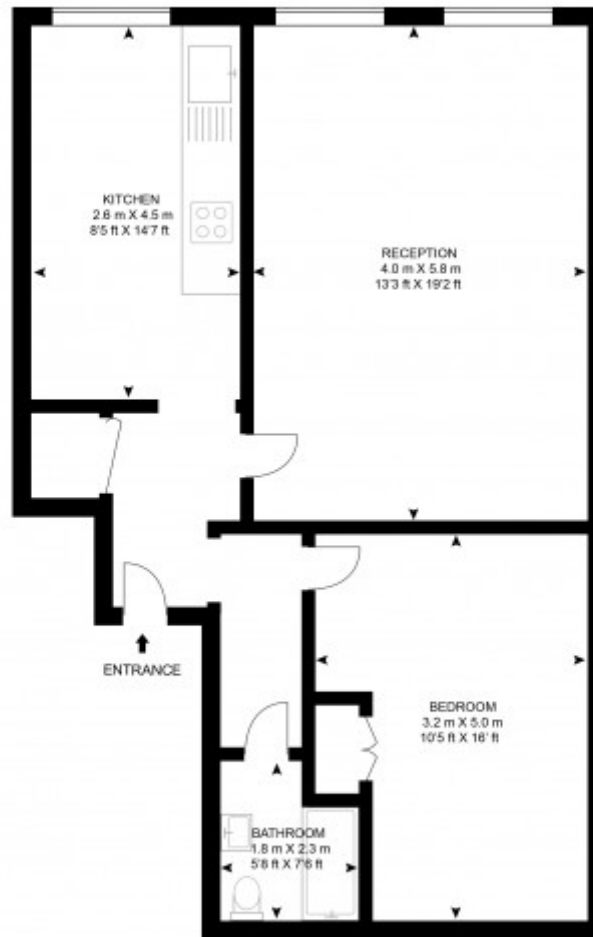
33 New Cavendish Street  
London,  
W1G 9TS

020 7486 4111

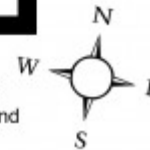
[jeremyjames@jeremy-james.co.uk](mailto:jeremyjames@jeremy-james.co.uk)

# Bulstrode Street

APPROX GROSS INTERNAL FLOOR AREA  
656 SQ.FT ( 61 SQ.M.)



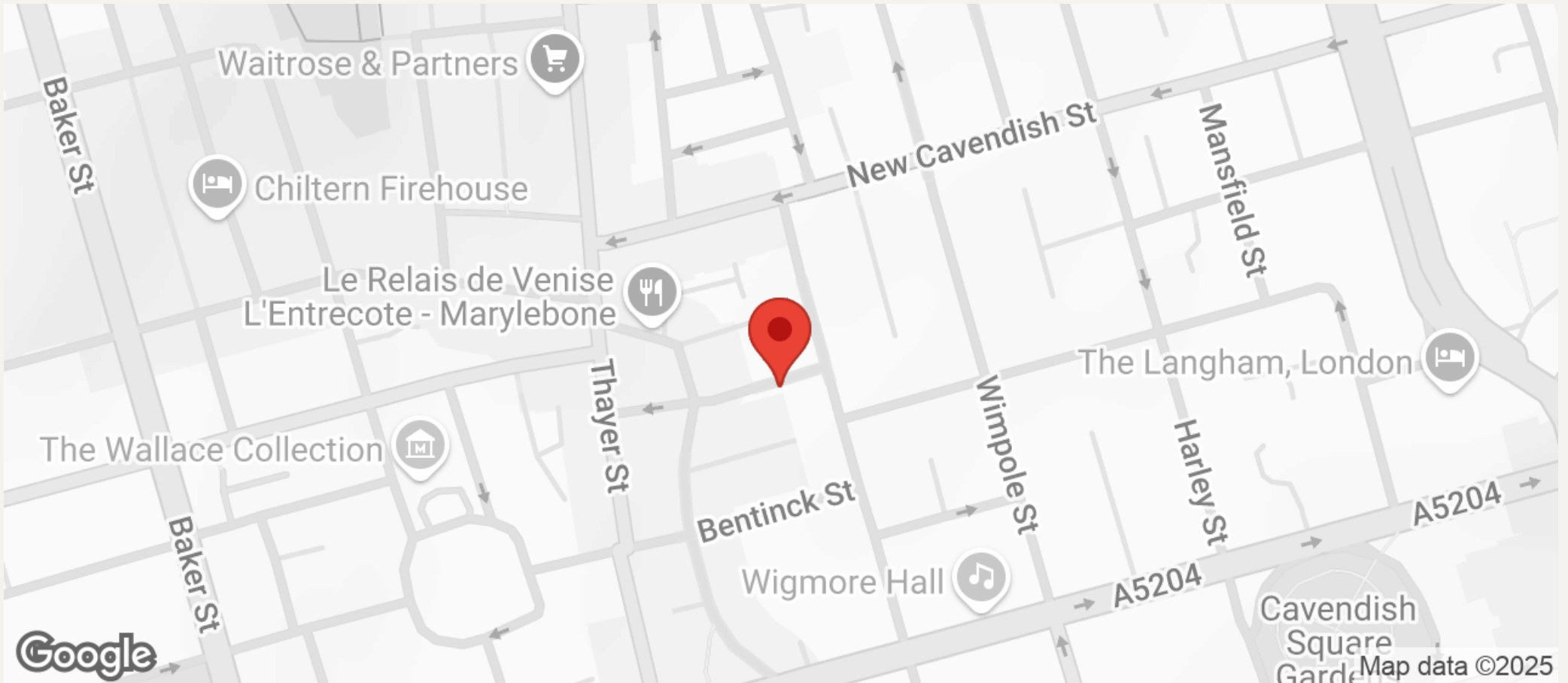
As Defined by RICS - Code of Measuring Practice  
The Floor - plans are for representation purposes only and  
should be used as such by any prospective client.





JEREMY JAMES

BULSTRODE STREET, MARYLEBONE VILLAGE. LONDON W1U



All negotiations are subject to contract. The Agents are not authorised to make or accept any contractual offer unless prior written notification to the contrary has been given on behalf of the client. In no other case whatsoever are the Agents (or any employee or sub-agent) authorised to make or give any representation or warranty on behalf of any party, and whilst information and particulars are given in all good faith intending purchasers and lessees must satisfy themselves independently as to the accuracy of all matters upon which then intend to rely. Measurements or distances referred to are approximately only. We have not carried out a survey or tested the services, appliances or specific fittings.

33 New Cavendish Street  
London,  
W1G 9TS

020 7486 4111

jeremyjames@jeremy-james.co.uk