



JEREMY JAMES

PORTLAND PLACE, MARYLEBONE VILLAGE, LONDON W1



PRICE

£1,450,000

TENURE

Leasehold

33 New Cavendish Street  
London,  
W1G 9TS

020 7486 4111  
[jeremyjames@jeremy-james.co.uk](mailto:jeremyjames@jeremy-james.co.uk)



# JEREMY JAMES

PORTLAND PLACE, MARYLEBONE VILLAGE, LONDON W1



## DESCRIPTION

This purpose-built building is located on the west of Portland Place close to the junction with Langham Place. Oxford Circus underground station together with the shopping facilities of Regent Street and Oxford Street are within close proximity. The open spaces of Regents Park are also nearby.

This apartment would suit a purchaser in the medical field and or for residential use.

## AMENITIES

Porter

Garage Space

Passenger Lift

Approximately 1,339 sq ft (124.4 sq m)

Medical Use or Residential Use

Lease: approximately 41 years remaining

---

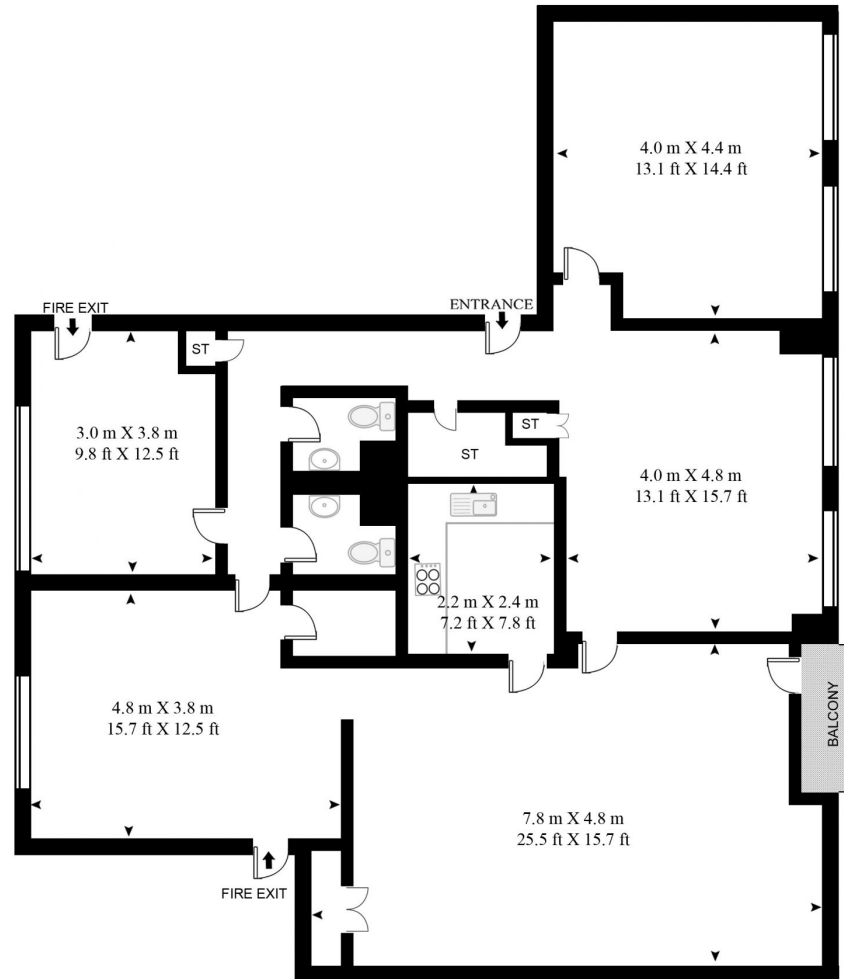
33 New Cavendish Street  
London,  
W1G 9TS

020 7486 4111

[jeremyjames@jeremy-james.co.uk](mailto:jeremyjames@jeremy-james.co.uk)

## PORTLAND PLACE

APPROXIMATE GROSS INTERNAL FLOOR AREA 1339 SQ.FT (124.4 SQ.M)



SECOND FLOOR



This floor plan has been defined by the RICS Code of Measurement. This floor plan and all others are for approximate representative purposes only and upon usage is agreed to as such by the client.

WWW: [hdvirtualart.com](http://hdvirtualart.com) | TEL: 0207 947 4014 | EMAIL: [info@hdvirtualart.com](mailto:info@hdvirtualart.com)



# JEREMY JAMES

## PORTLAND PLACE, MARYLEBONE VILLAGE, LONDON W1



All negotiations are subject to contract. The Agents are not authorised to make or accept any contractual offer unless prior written notification to the contrary has been given on behalf of the client. In no other case whatsoever are the Agents (or any employee or sub-agent) authorised to make or give any representation or warranty on behalf of any party, and whilst information and particulars are given in all good faith intending purchasers and lessees must satisfy themselves independently as to the accuracy of all matters upon which then intend to rely. Measurements or distances referred to are approximately only. We have not carried out a survey or tested the services, appliances or specific fittings.

33 New Cavendish Street  
London,  
W1G 9TS

020 7486 4111  
[jeremyjames@jeremy-james.co.uk](mailto:jeremyjames@jeremy-james.co.uk)