



JEREMY JAMES

WEYMOUTH STREET, MARYLEBONE VILLAGE. LONDON W1W



PRICE

£525 per week

FURNINSHINGS

Furnished/Unfurnished

DEPOSIT

£3,150

33 New Cavendish Street
London,
W1G 9TS

020 7486 4111
jeremyjames@jeremy-james.co.uk



JEREMY JAMES

WEYMOUTH STREET, MARYLEBONE VILLAGE. LONDON W1W



DESCRIPTION

This flat comprises of living room, separate kitchen, master bedroom with ample storage, single bedroom / study and a bathroom.

Located just off Portland Place moments away from Oxford Street, Regent's Park and the various amenities of Great Portland Street with great transport links nearby.

Great Portland Street Underground Station (Hammersmith & City/Circle/Metropolitan) and Regent's Park Underground Station (Waterloo Line) is within a couple minutes while the A40 offers routes in and out of London for motorists.

AMENITIES

One / Two Bedrooms

Prestigious Porter Block

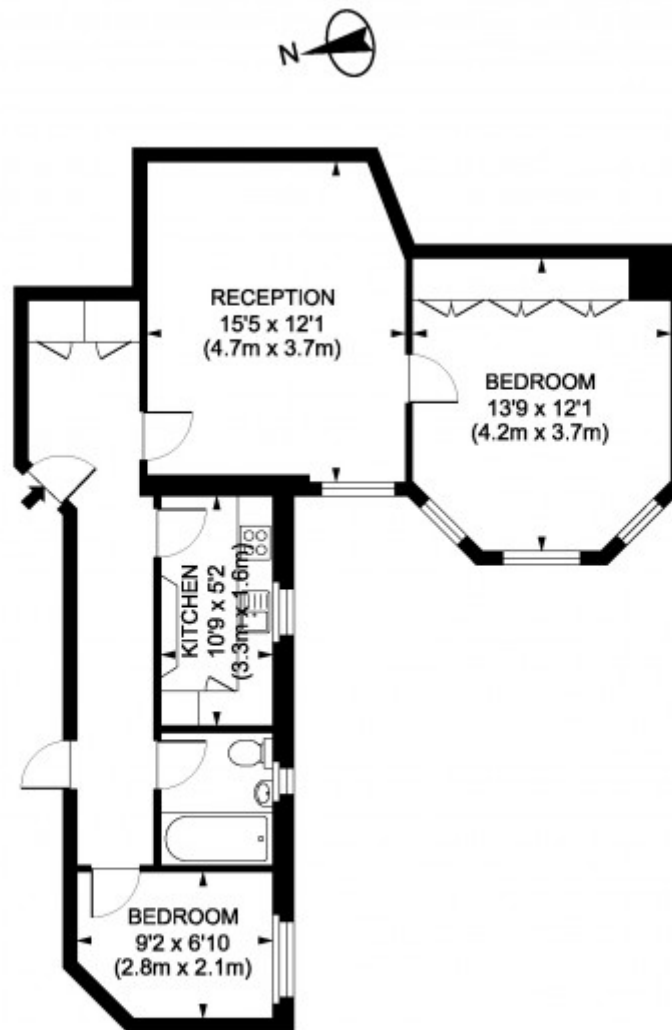
Excellent Location

Furnished/Unfurnished

33 New Cavendish Street
London,
W1G 9TS

020 7486 4111

jeremyjames@jeremy-james.co.uk



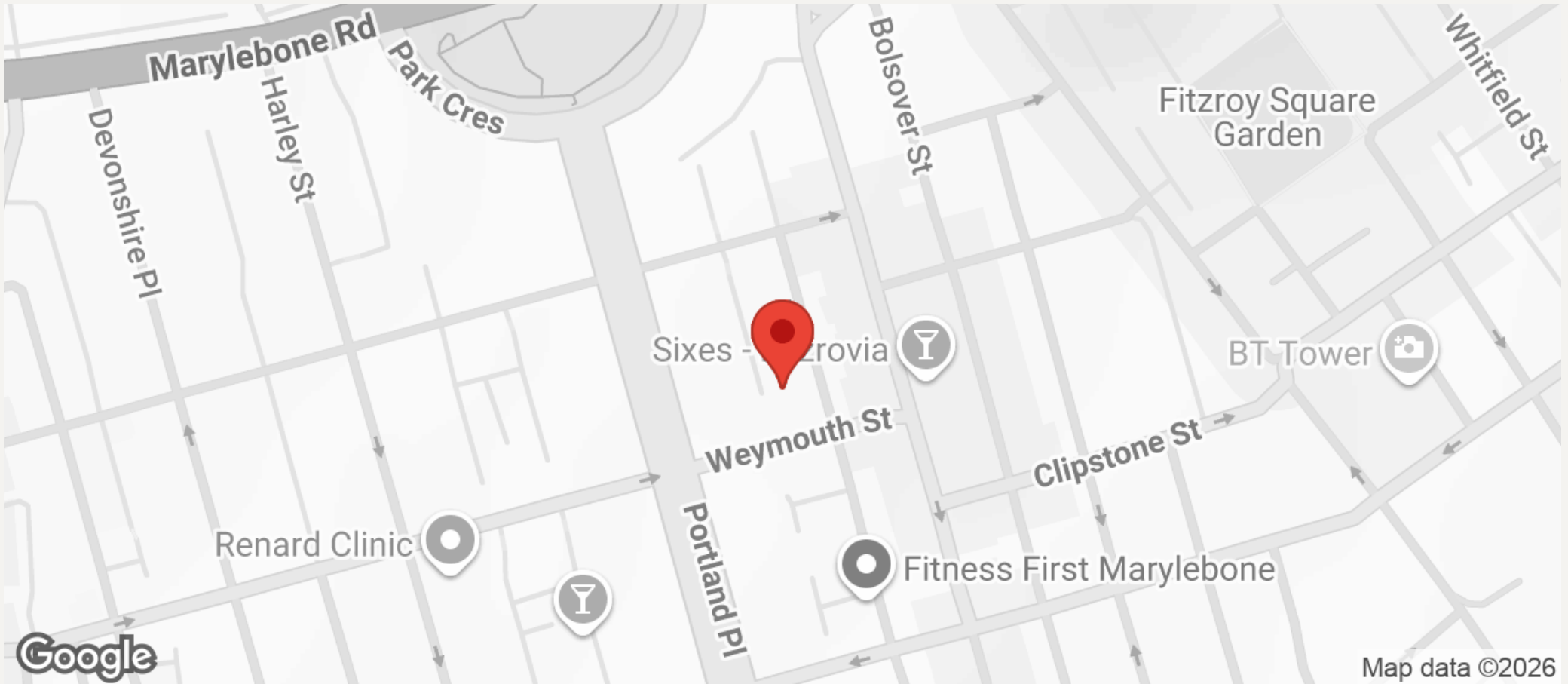
EIGHT FLOOR

Weymouth Street, W1W
Gross Internal Area 602 sq ft 56 sq metres



JEREMY JAMES

WEYMOUTH STREET, MARYLEBONE VILLAGE. LONDON W1W



All negotiations are subject to contract. The Agents are not authorised to make or accept any contractual offer unless prior written notification to the contrary has been given on behalf of the client. In no other case whatsoever are the Agents (or any employee or sub-agent) authorised to make or give any representation or warranty on behalf of any party, and whilst information and particulars are given in all good faith intending purchasers and lessees must satisfy themselves independently as to the accuracy of all matters upon which then intend to rely. Measurements or distances referred to are approximately only. We have not carried out a survey or tested the services, appliances or specific fittings.

33 New Cavendish Street
London,
W1G 9TS

020 7486 4111

jeremyjames@jeremy-james.co.uk