



JEREMY JAMES

HARLEY STREET, HARLEY STREET MEDICAL DISTRICT, LONDON W1G



RENT

£165,317 per annum

LOCAL AUTHORITY

City of Westminster

COUNCIL TAX BAND

D

33 New Cavendish Street
London,
W1G 9TS

020 7486 4111
jeremyjames@jeremy-james.co.uk



JEREMY JAMES

HARLEY STREET, HARLEY STREET MEDICAL DISTRICT, LONDON W1G



DESCRIPTION

Local transport links include underground stations; Oxford Circus, Bond Street, Baker Street and Regents Park. Mainline stations nearby include Marylebone and Paddington as well as King Cross and St Pancras, allowing easy access to Heathrow airport. Parking is available on the street or alternatively there is an NCP car park moments away.

AMENITIES

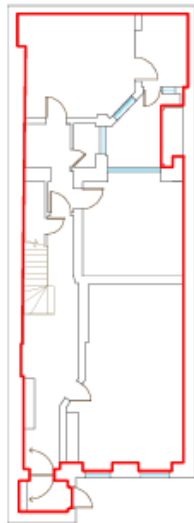
Ground and Lower ground floor

In the heart of the medical district

Ground floor: 3 rooms

Lower Ground Floor: 3 rooms

EPC: D



Lower Ground Floor



Ground Floor



0 2 4 m

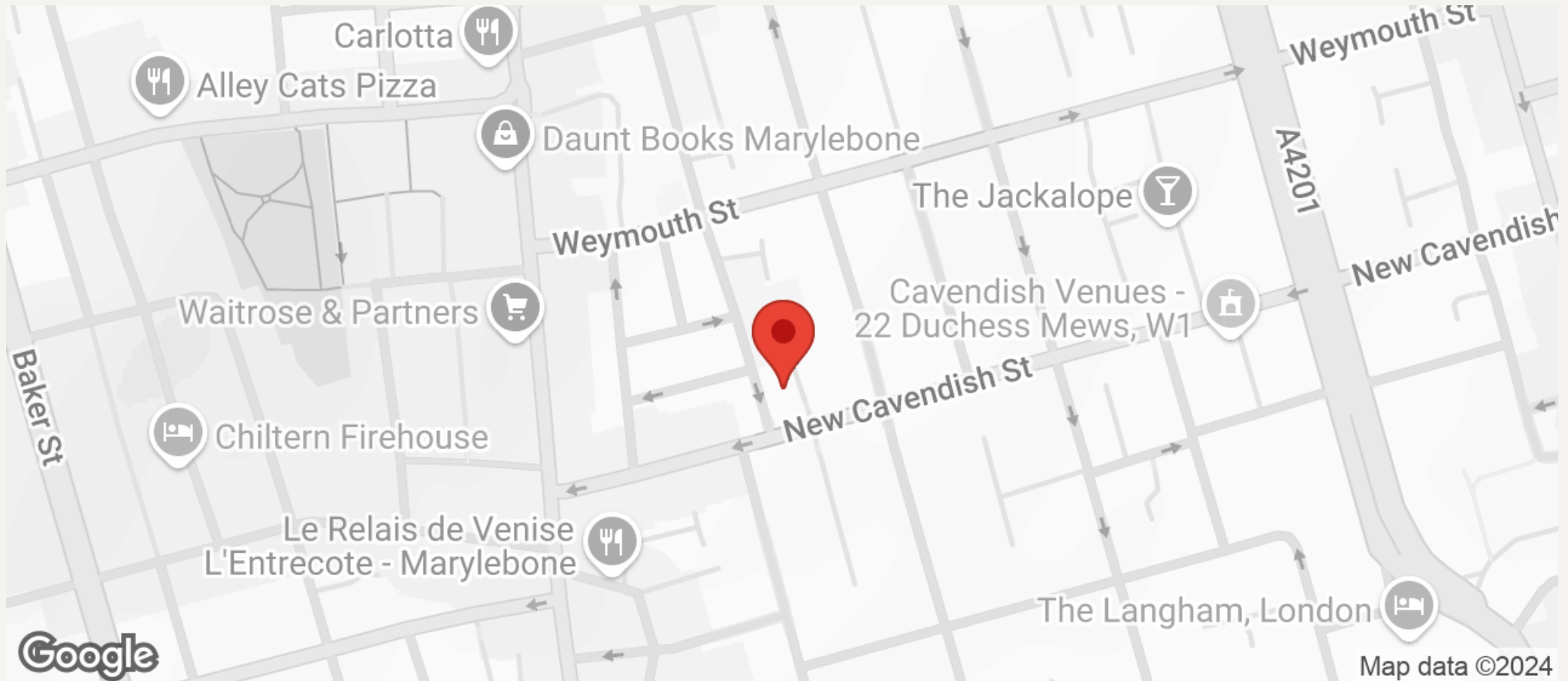


Shalib & Co Ground Floor Drinking Yard Bank Lane London, W6K 1DWE Tel: +44 (0)20 7432 4388 www.shalib.co.uk	
PROJECT 14 Harley Street London, W1G9QY	
TITLE Lease plan	
V.3.000 COMMENTS	
SCALE 1:200 @ A1	DATE 16/05/2020
DRAWN BY S/SHALIB	CHECKED BY VJ



JEREMY JAMES

HARLEY STREET, HARLEY STREET MEDICAL DISTRICT, LONDON W1G



All negotiations are subject to contract. The Agents are not authorised to make or accept any contractual offer unless prior written notification to the contrary has been given on behalf of the client. In no other case whatsoever are the Agents (or any employee or sub-agent) authorised to make or give any representation or warranty on behalf of any party, and whilst information and particulars are given in all good faith intending purchasers and lessees must satisfy themselves independently as to the accuracy of all matters upon which they intend to rely. Measurements or distances referred to are approximately only. We have not carried out a survey or tested the services, appliances or specific fittings.

33 New Cavendish Street
London,
W1G 9TS

020 7486 4111
jeremyjames@jeremy-james.co.uk