



JEREMY JAMES

PORTLAND PLACE, MARYLEBONE, LONDON, W1



PRICE

£2,400 per week

FURNINSHINGS

Unfurnished

DEPOSIT

£14,400

33 New Cavendish Street
London,
W1G 9TS

020 7486 4111
jeremyjames@jeremy-james.co.uk



JEREMY JAMES

PORTLAND PLACE, MARYLEBONE, LONDON, W1



DESCRIPTION

Then property comprises of a double reception, eat-in kitchen, master bedroom with en-suite bathroom and separate shower, further two double bedrooms, family shower room, utility/ laundry area and guest cloakroom.

AMENITIES

Third and Fourth Floor Maisonette

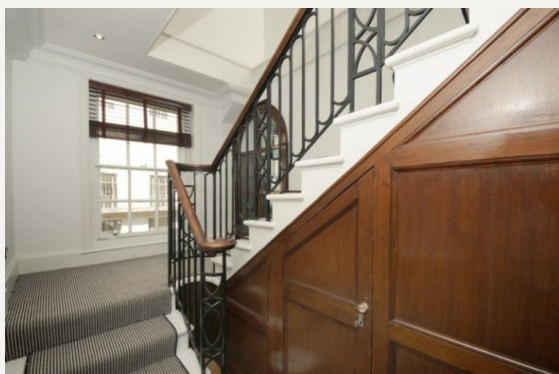
Two Reception Rooms

Three Bedrooms

Two Bathrooms

Generous Storage

Lift



33 New Cavendish Street
London,
W1G 9TS

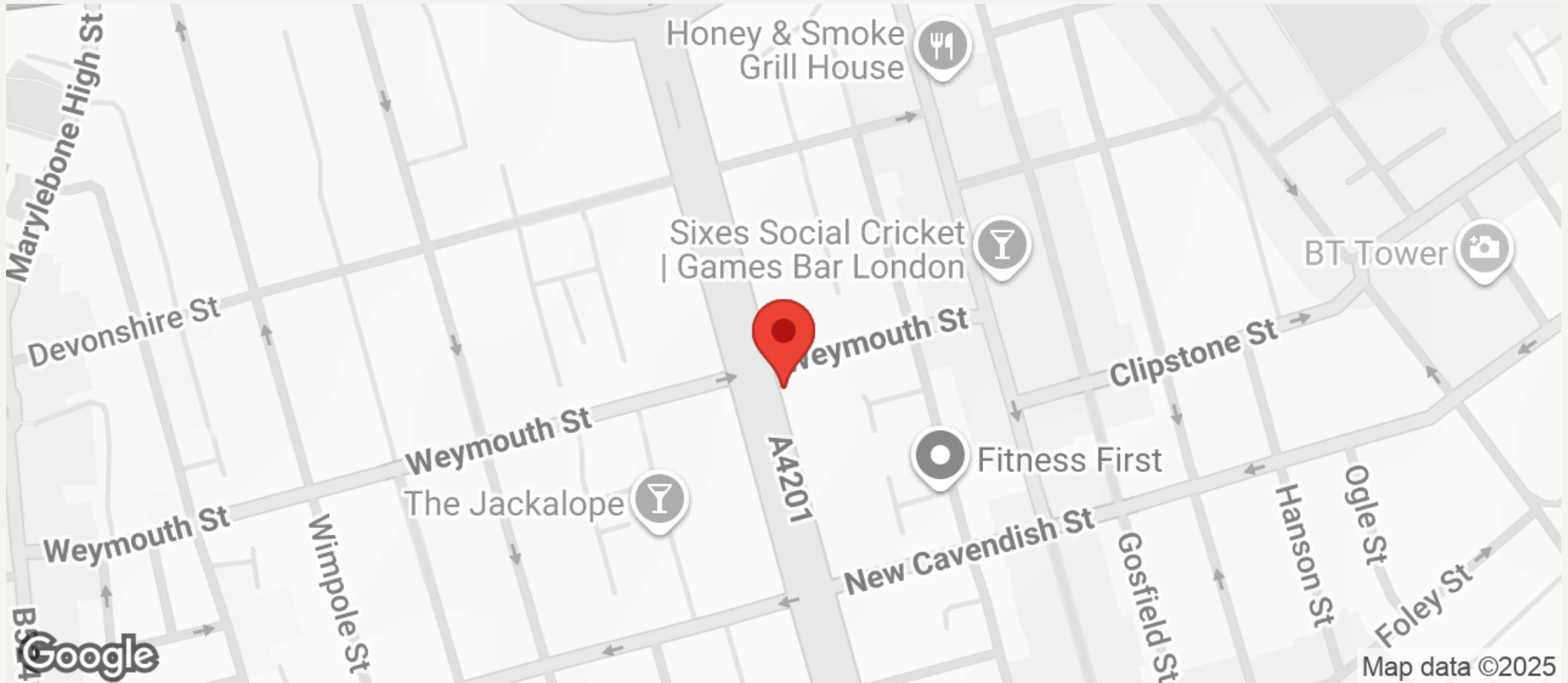
020 7486 4111

jeremyjames@jeremy-james.co.uk



JEREMY JAMES

PORTLAND PLACE, MARYLEBONE, LONDON, W1



All negotiations are subject to contract. The Agents are not authorised to make or accept any contractual offer unless prior written notification to the contrary has been given on behalf of the client. In no other case whatsoever are the Agents (or any employee or sub-agent) authorised to make or give any representation or warranty on behalf of any party, and whilst information and particulars are given in all good faith intending purchasers and lessees must satisfy themselves independently as to the accuracy of all matters upon which then intend to rely. Measurements or distances referred to are approximately only. We have not carried out a survey or tested the services, appliances or specific fittings.

33 New Cavendish Street
London,
W1G 9TS

020 7486 4111

jeremyjames@jeremy-james.co.uk