



**JEREMY JAMES**

**HARLEY STREET, MARYLEBONE VILLAGE, LONDON W1**



**PRICE**

£775 per week

**FURNINSHINGS**

Part-furnished

**DEPOSIT**

£4,650

33 New Cavendish Street  
London,  
W1G 9TS

020 7486 4111  
[jeremyjames@jeremy-james.co.uk](mailto:jeremyjames@jeremy-james.co.uk)



# JEREMY JAMES

HARLEY STREET, MARYLEBONE VILLAGE, LONDON W1



## DESCRIPTION

The accommodation comprises of two double bedrooms, a high quality en suite bathroom, a shower room and large kitchen/dining room leading onto the living room.

## AMENITIES

Recently Refurbished

Wood Flooring

Spacious

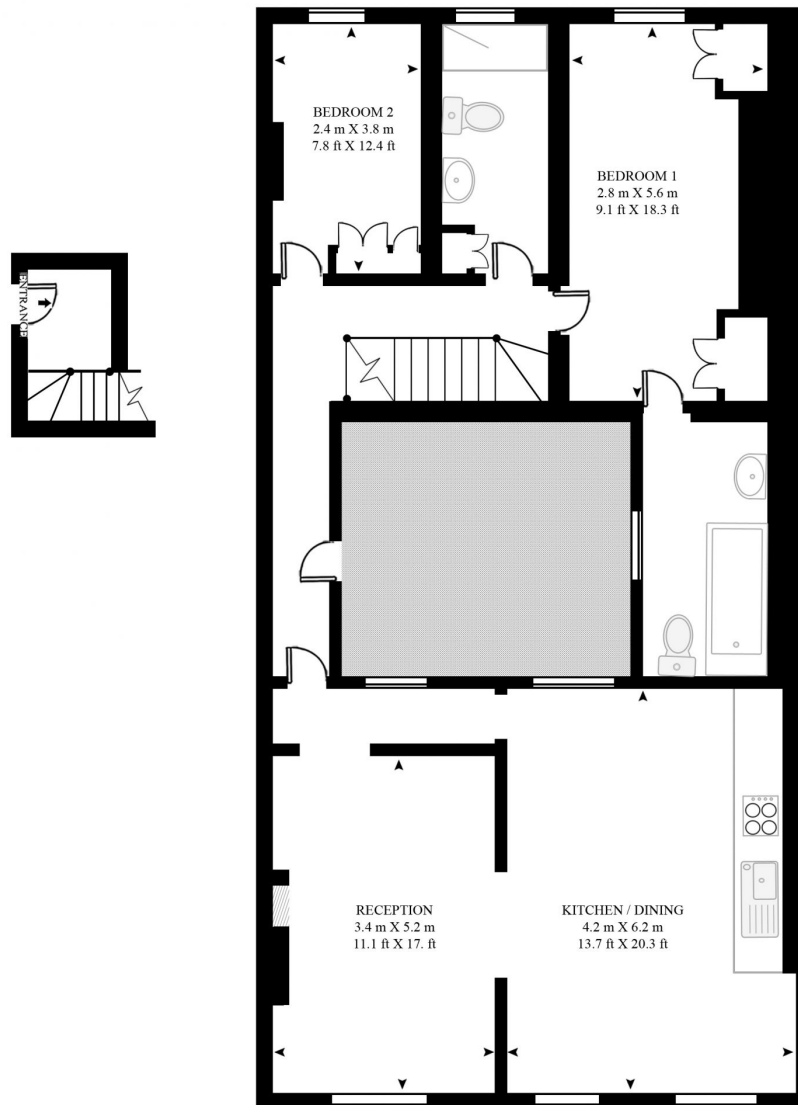
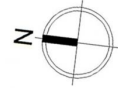


33 New Cavendish Street  
London,  
W1G 9TS

020 7486 4111  
[jeremyjames@jeremy-james.co.uk](mailto:jeremyjames@jeremy-james.co.uk)

## HARLEY STREET

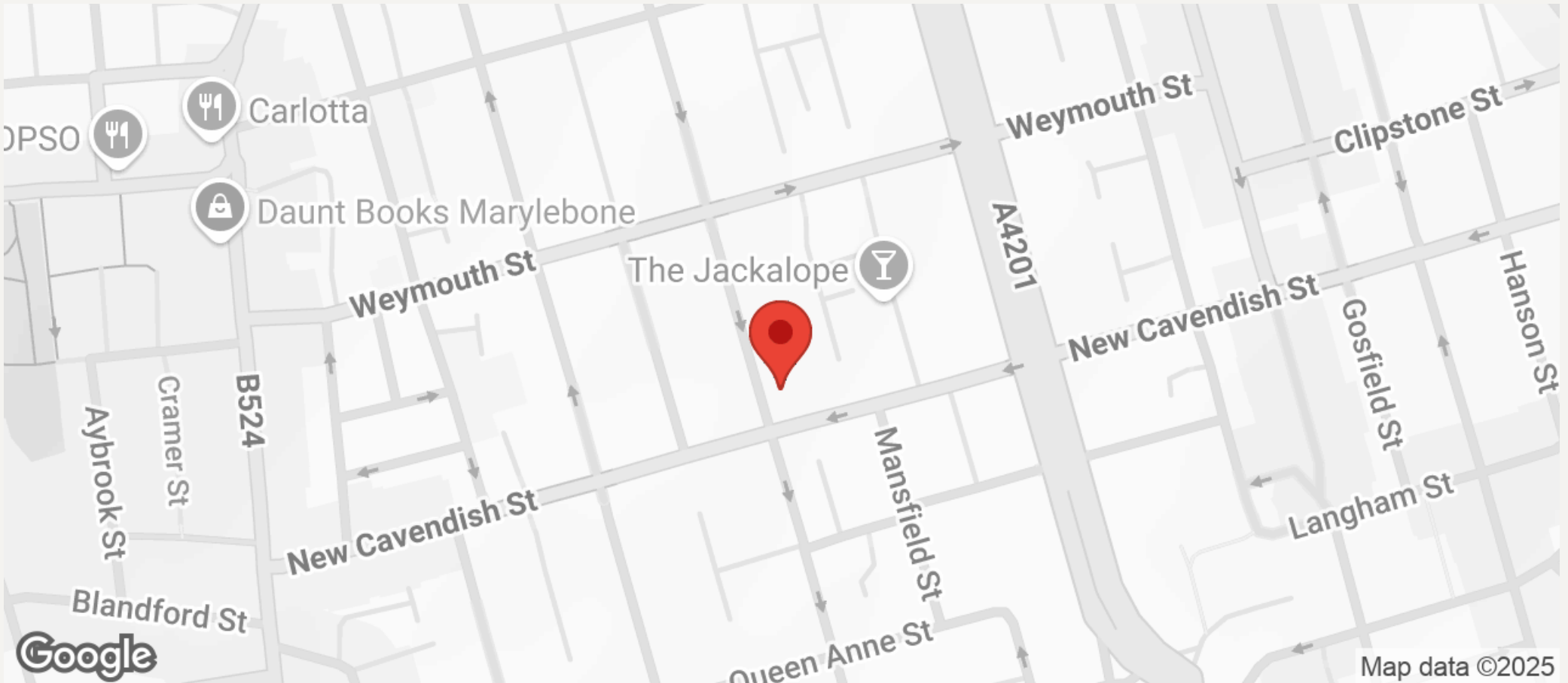
APPROXIMATE GROSS INTERNAL FLOOR AREA 1152 SQ.FT (107.1 SQ.M)





# JEREMY JAMES

## HARLEY STREET, MARYLEBONE VILLAGE, LONDON W1



All negotiations are subject to contract. The Agents are not authorised to make or accept any contractual offer unless prior written notification to the contrary has been given on behalf of the client. In no other case whatsoever are the Agents (or any employee or sub-agent) authorised to make or give any representation or warranty on behalf of any party, and whilst information and particulars are given in all good faith intending purchasers and lessees must satisfy themselves independently as to the accuracy of all matters upon which then intend to rely. Measurements or distances referred to are approximately only. We have not carried out a survey or tested the services, appliances or specific fittings.

33 New Cavendish Street  
London,  
W1G 9TS

020 7486 4111

[jeremyjames@jeremy-james.co.uk](mailto:jeremyjames@jeremy-james.co.uk)