



JEREMY JAMES

HARLEY STREET, HARLEY STREET MEDICAL DISTRICT, LONDON W1



RENT

£50,903 per annum

33 New Cavendish Street  
London,  
W1G 9TS

020 7486 4111  
[jeremyjames@jeremy-james.co.uk](mailto:jeremyjames@jeremy-james.co.uk)



# JEREMY JAMES

## HARLEY STREET, HARLEY STREET MEDICAL DISTRICT, LONDON W1



### DESCRIPTION

Local transport links include underground stations; Oxford Circus, Bond Street, Baker Street and Regents Park. Mainline stations nearby include Marylebone and Paddington as well as King Cross and St Pancras, allowing easy access to Heathrow airport. Parking is available on the street or alternatively there is an NCP car park moments away.

Other floors available on request.

### AMENITIES

Passenger lift

In the heart of the medical district

Communal Waiting Room

Reception Service

---

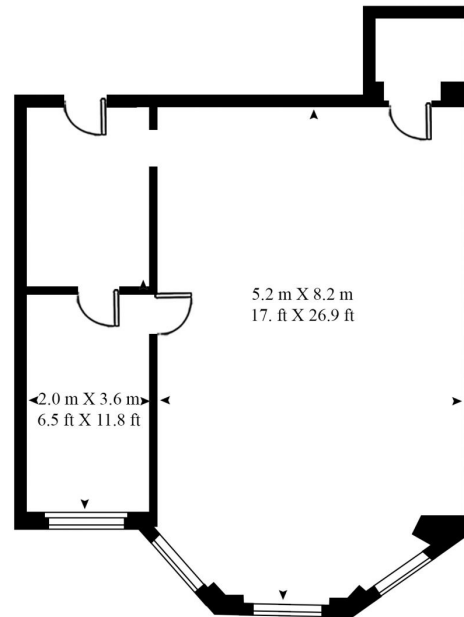
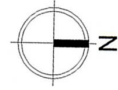
33 New Cavendish Street  
London,  
W1G 9TS

020 7486 4111

[jeremyjames@jeremy-james.co.uk](mailto:jeremyjames@jeremy-james.co.uk)

## HARLEY STREET

APPROXIMATE NET INTERNAL FLOOR AREA 617 SQ.FT (57.4 SQ.M)



FIRST FLOOR



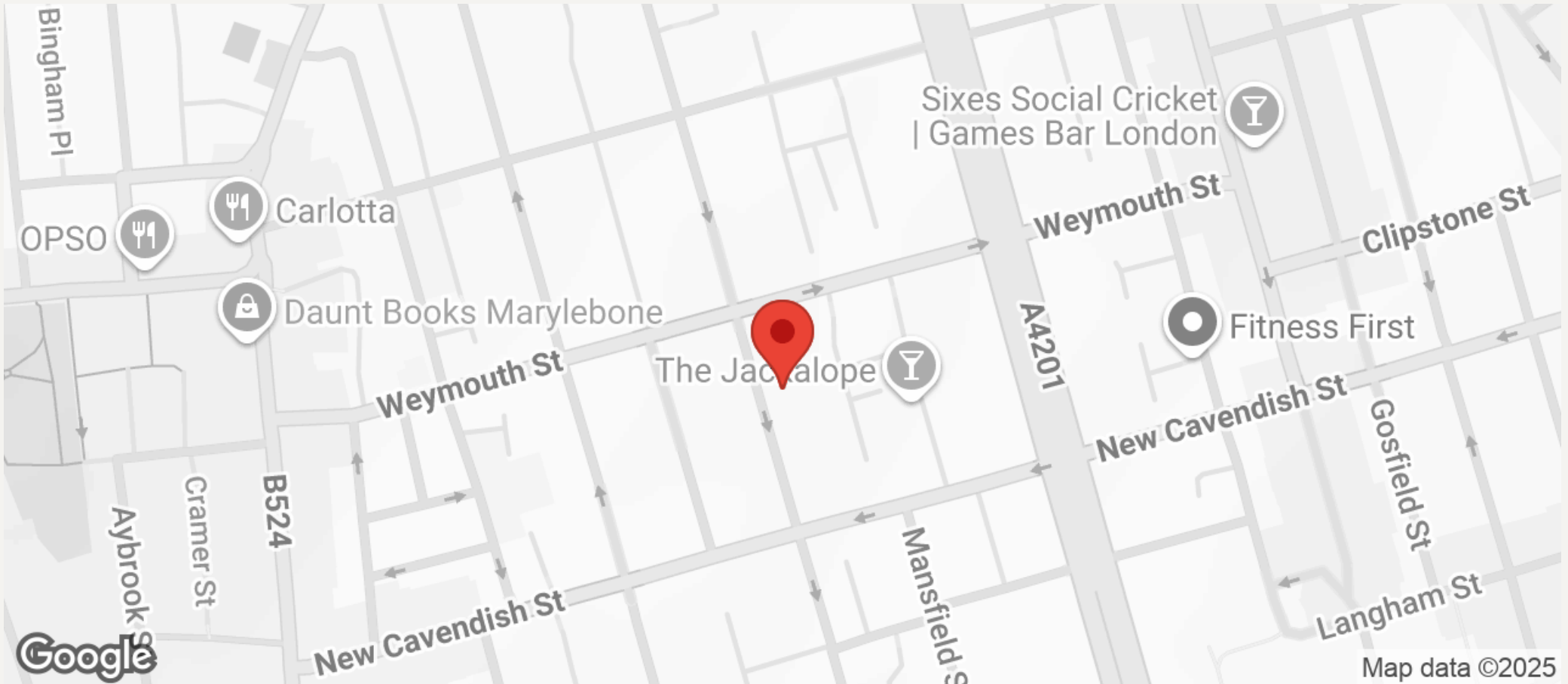
This floor plan has been defined by the RICS Code of Measurement. This floor plan and all others are for approximate representative purposes only and upon usage is agreed to as such by the client.

WWW: [hdvirtualart.com](http://hdvirtualart.com) | TEL: 0207.974.1567 | EMAIL: [info@hdvirtualart.com](mailto:info@hdvirtualart.com)



# JEREMY JAMES

## HARLEY STREET, HARLEY STREET MEDICAL DISTRICT, LONDON W1



All negotiations are subject to contract. The Agents are not authorised to make or accept any contractual offer unless prior written notification to the contrary has been given on behalf of the client. In no other case whatsoever are the Agents (or any employee or sub-agent) authorised to make or give any representation or warranty on behalf of any party, and whilst information and particulars are given in all good faith intending purchasers and lessees must satisfy themselves independently as to the accuracy of all matters upon which then intend to rely. Measurements or distances referred to are approximately only. We have not carried out a survey or tested the services, appliances or specific fittings.

33 New Cavendish Street  
London,  
W1G 9TS

020 7486 4111  
jeremyjames@jeremy-james.co.uk