



**JEREMY JAMES**

**WIMPOLE STREET, MARYLEBONE VILLAGE, LONDON W1**



**PRICE**  
£475,000

**TENURE**  
Freehold



# JEREMY JAMES

WIMPOLE STREET, MARYLEBONE VILLAGE, LONDON W1



## DESCRIPTION

Accommodation comprises; The studio apartment is on the lower ground floor, Kitchen and Bathroom.

Newly refurbished studio apartment.

## AMENITIES

Bright

Spacious

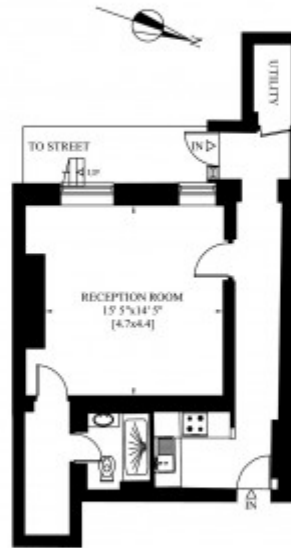
Recently refurbished

Separate entrance

Residents parking permit available subject to usual consent

WIMPOLE STREET  
LONDON W1

Gross Internal Area: 51 Sq. metres  
553 Sq. feet

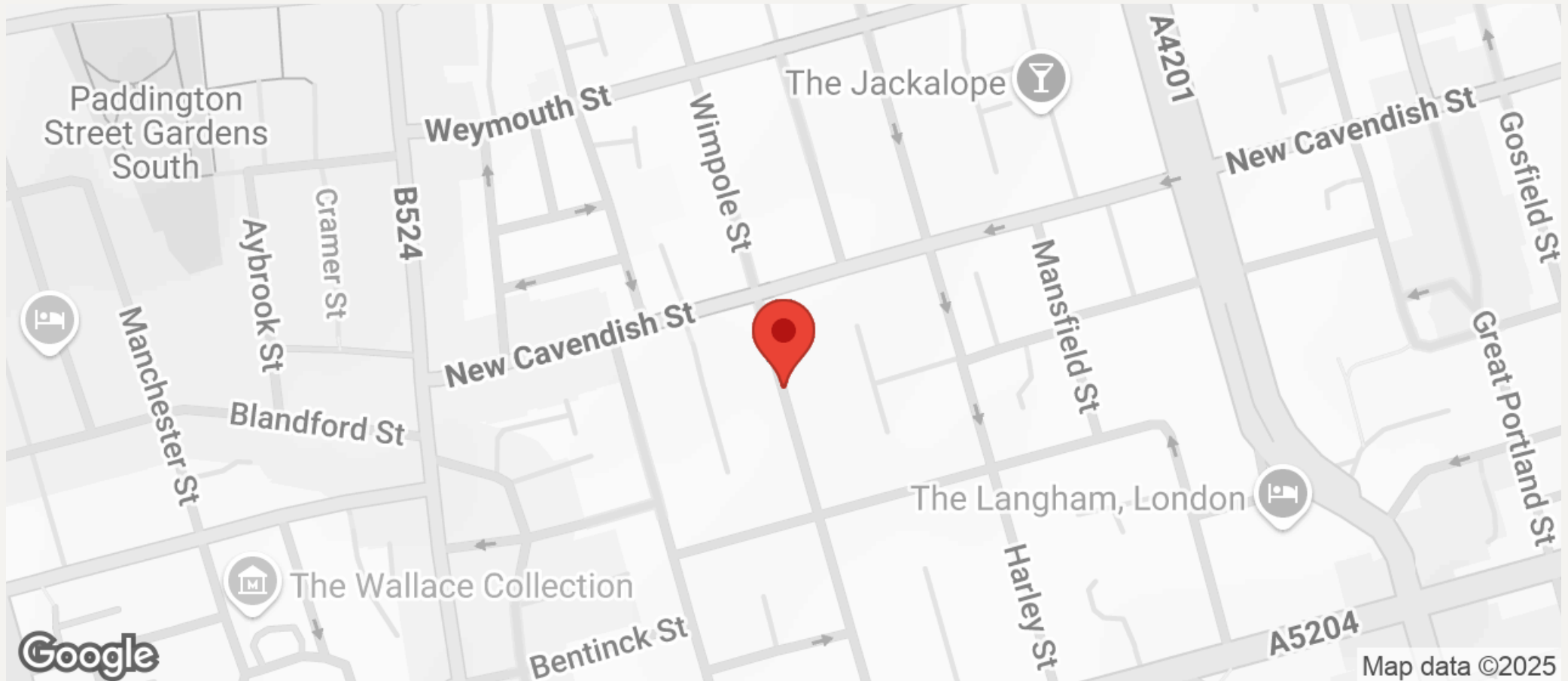


LOWER GROUND FLOOR



# JEREMY JAMES

## WIMPOLE STREET, MARYLEBONE VILLAGE, LONDON W1



All negotiations are subject to contract. The Agents are not authorised to make or accept any contractual offer unless prior written notification to the contrary has been given on behalf of the client. In no other case whatsoever are the Agents (or any employee or sub-agent) authorised to make or give any representation or warranty on behalf of any party, and whilst information and particulars are given in all good faith intending purchasers and lessees must satisfy themselves independently as to the accuracy of all matters upon which then intend to rely. Measurements or distances referred to are approximately only. We have not carried out a survey or tested the services, appliances or specific fittings.

33 New Cavendish Street  
London,  
W1G 9TS

020 7486 4111

[jeremyjames@jeremy-james.co.uk](mailto:jeremyjames@jeremy-james.co.uk)