



**JEREMY JAMES**

**WEYMOUTH STREET, MARYLEBONE VILLAGE, LONDON W1**



**PRICE**

£575 per week

**FURNINSHINGS**

Furnished

**DEPOSIT**

£2,875

33 New Cavendish Street  
London,  
W1G 9TS

020 7486 4111  
[jeremyjames@jeremy-james.co.uk](mailto:jeremyjames@jeremy-james.co.uk)



# JEREMY JAMES

## WEYMOUTH STREET, MARYLEBONE VILLAGE, LONDON W1



### DESCRIPTION

This one double bedroom apartment is conveniently situated a few moments' away from Marylebone High Street with its fabulous restaurants and high end boutiques.

Accommodation comprises: Large reception, double bedroom with plentiful storage, modern kitchen and bathroom.

### AMENITIES

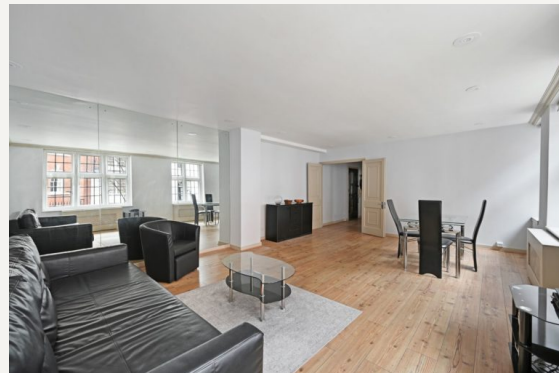
1 bedroom

Porter

EPC: D

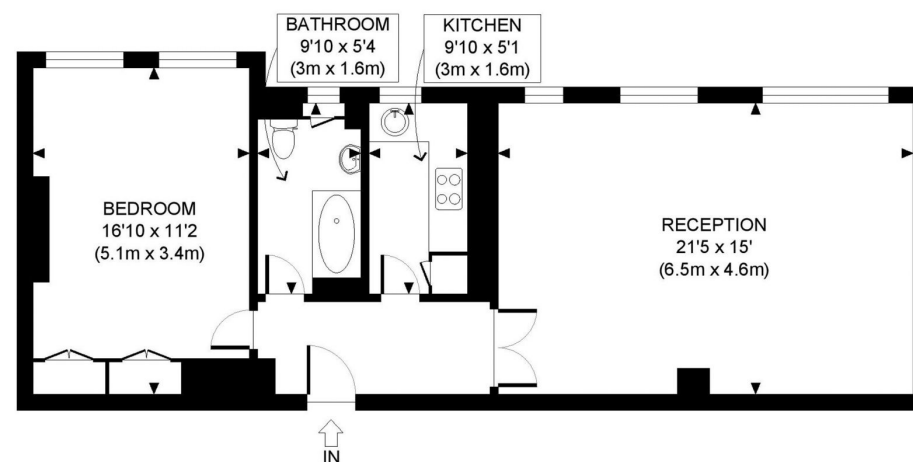
Westminster Council: Band E

Wood floors



33 New Cavendish Street  
London,  
W1G 9TS

020 7486 4111  
[jeremyjames@jeremy-james.co.uk](mailto:jeremyjames@jeremy-james.co.uk)



GROUND FLOOR  
GROSS INTERNAL  
FLOOR AREA 702 SQ FT



APPROX. GROSS INTERNAL FLOOR AREA: 702 SQ FT/ 65 SQM

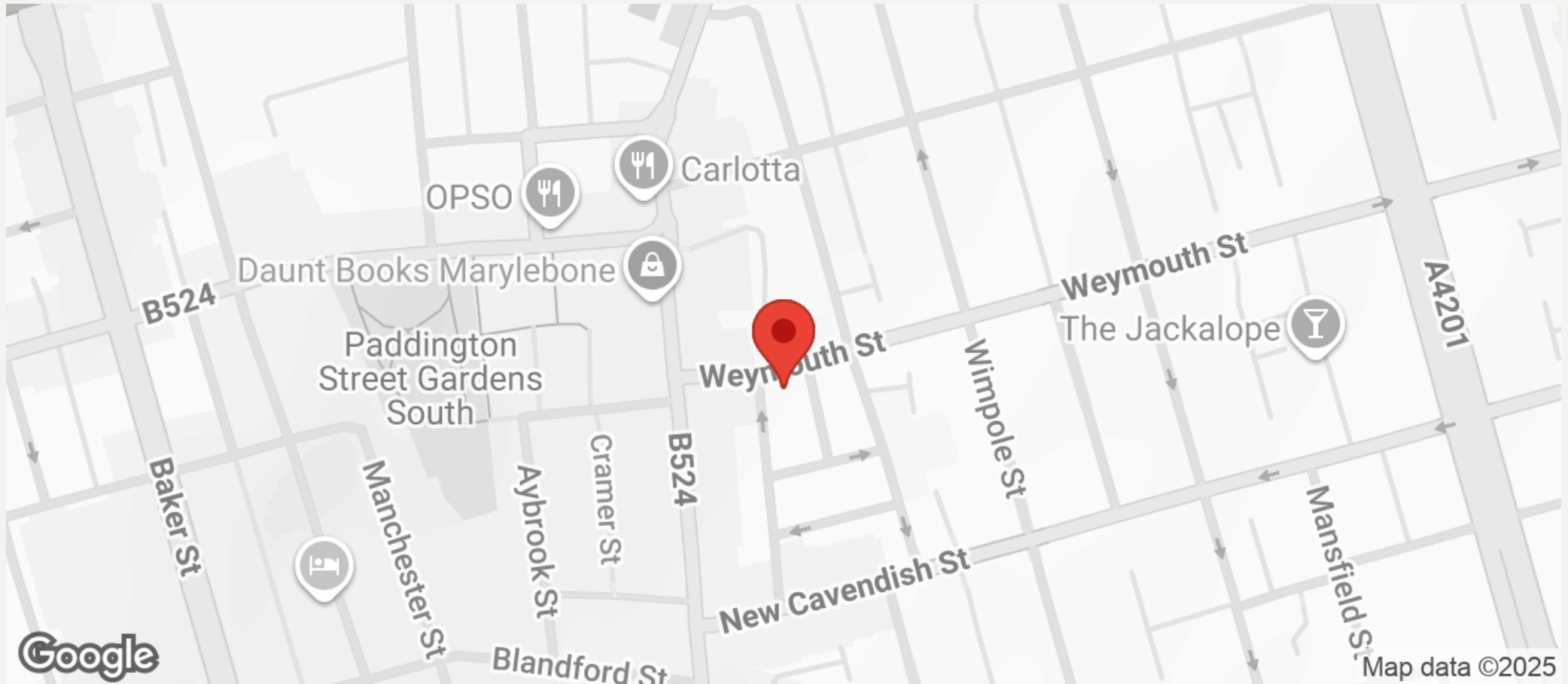
**PROPERTY PHOTO PLANS**.co.uk  
ONE STOP SHOP FOR PROPERTY MARKETING

Whilst every attempt has been made to ensure the accuracy of the floor plan contained here, measurements of the doors, windows, rooms and any other items are approximate and no responsibility is taken for any errors, omissions, or miss-statement. This plan is for illustrative purposes only and should be used as such by any prospective client. The services, systems and appliances shown have not been tested and no guarantee as to the operability or efficiency can be given.



# JEREMY JAMES

## WEYMOUTH STREET, MARYLEBONE VILLAGE, LONDON W1



All negotiations are subject to contract. The Agents are not authorised to make or accept any contractual offer unless prior written notification to the contrary has been given on behalf of the client. In no other case whatsoever are the Agents (or any employee or sub-agent) authorised to make or give any representation or warranty on behalf of any party, and whilst information and particulars are given in all good faith intending purchasers and lessees must satisfy themselves independently as to the accuracy of all matters upon which then intend to rely. Measurements or distances referred to are approximately only. We have not carried out a survey or tested the services, appliances or specific fittings.

33 New Cavendish Street  
London,  
W1G 9TS

020 7486 4111

[jeremyjames@jeremy-james.co.uk](mailto:jeremyjames@jeremy-james.co.uk)