



# JEREMY JAMES

WELBECK STREET, MARYLEBONE VILLAGE. LONDON W1



## PRICE

£445 per week

## FURNINSHINGS

Furnished

## DEPOSIT

£2,670

---

33 New Cavendish Street  
London,  
W1G 9TS

020 7486 4111  
[jeremyjames@jeremy-james.co.uk](mailto:jeremyjames@jeremy-james.co.uk)



# JEREMY JAMES

WELBECK STREET, MARYLEBONE VILLAGE. LONDON W1



## DESCRIPTION

This one double bedroom apartment would be ideal for either a single person or couple and is located close to Marylebone Village.

Accommodation comprises: Reception room with large windows and fireplace, modern fully fitted kitchen, double bedroom with storage and bathroom with shower over bath.

## AMENITIES

One Double Bedroom

Separate Kitchen

Ground Floor

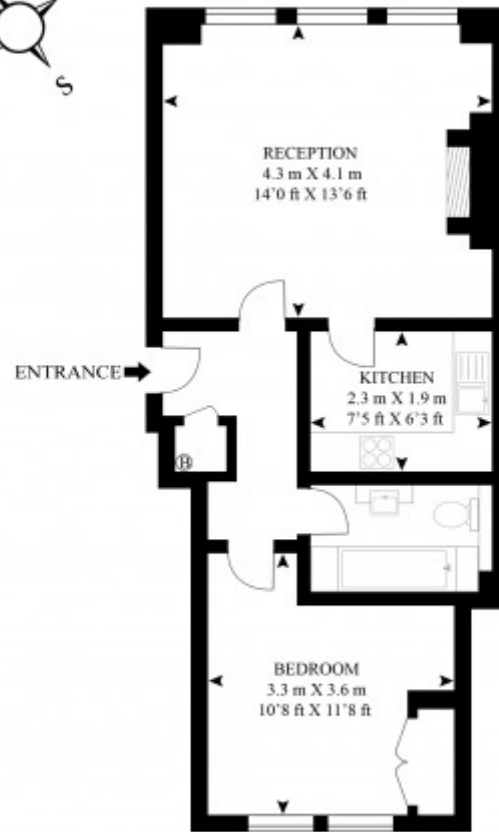
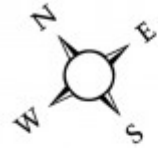
Excellent Location

Furnished by Separate Agreement



# FLAT 4, 16 WELBECK STREET

APPROX GROSS INTERNAL FLOOR AREA 452 SQ.FT (42 SQ.M)



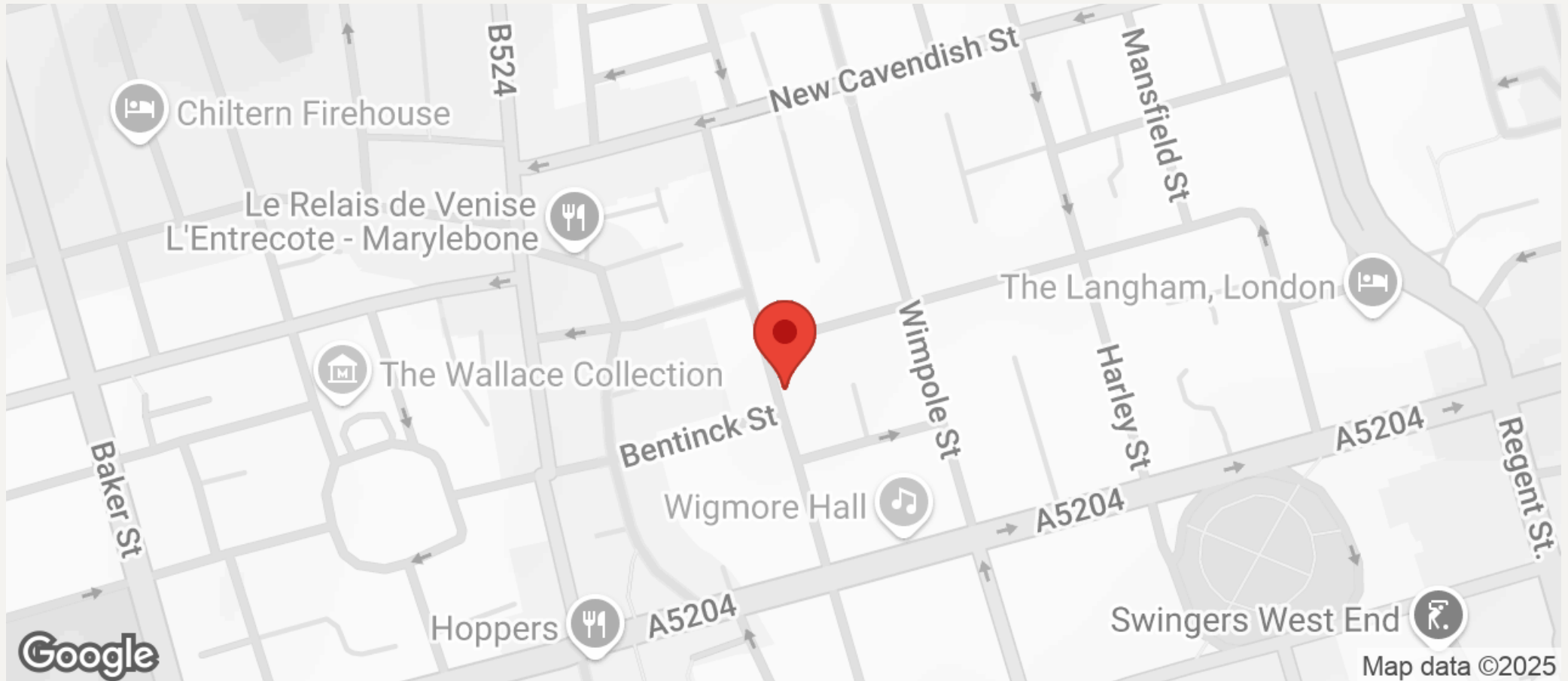
GROUND FLOOR

As Defined by RICS - Code of Measuring Practice  
The Floor - plans are for representation purposes only and  
should be used as such by any prospective client.



# JEREMY JAMES

WELBECK STREET, MARYLEBONE VILLAGE. LONDON W1



All negotiations are subject to contract. The Agents are not authorised to make or accept any contractual offer unless prior written notification to the contrary has been given on behalf of the client. In no other case whatsoever are the Agents (or any employee or sub-agent) authorised to make or give any representation or warranty on behalf of any party, and whilst information and particulars are given in all good faith intending purchasers and lessees must satisfy themselves independently as to the accuracy of all matters upon which then intend to rely. Measurements or distances referred to are approximately only. We have not carried out a survey or tested the services, appliances or specific fittings.

33 New Cavendish Street  
London,  
W1G 9TS

020 7486 4111

[jeremyjames@jeremy-james.co.uk](mailto:jeremyjames@jeremy-james.co.uk)