



JEREMY JAMES

HARLEY STREET, MARYLEBONE VILLAGE, LONDON W1



RENT

£90,000 per annum

33 New Cavendish Street
London,
W1G 9TS

020 7486 4111
jeremyjames@jeremy-james.co.uk



JEREMY JAMES

HARLEY STREET, MARYLEBONE VILLAGE, LONDON W1



DESCRIPTION

The available accommodation comprises of four medical rooms, approximately 1,525 sq.ft. (142 sq.m.) occupies the entire lower ground floor, which is served by a passenger lift.

Local transport links include underground stations; Oxford Circus, Bond Street, Baker Street and Regents Park. Mainline stations nearby include Marylebone and Paddington as well as King Cross and St Pancras, allowing easy access to Heathrow airport. Parking is available on the street or alternatively there is an NCP car park moments away.

AMENITIES

Lift

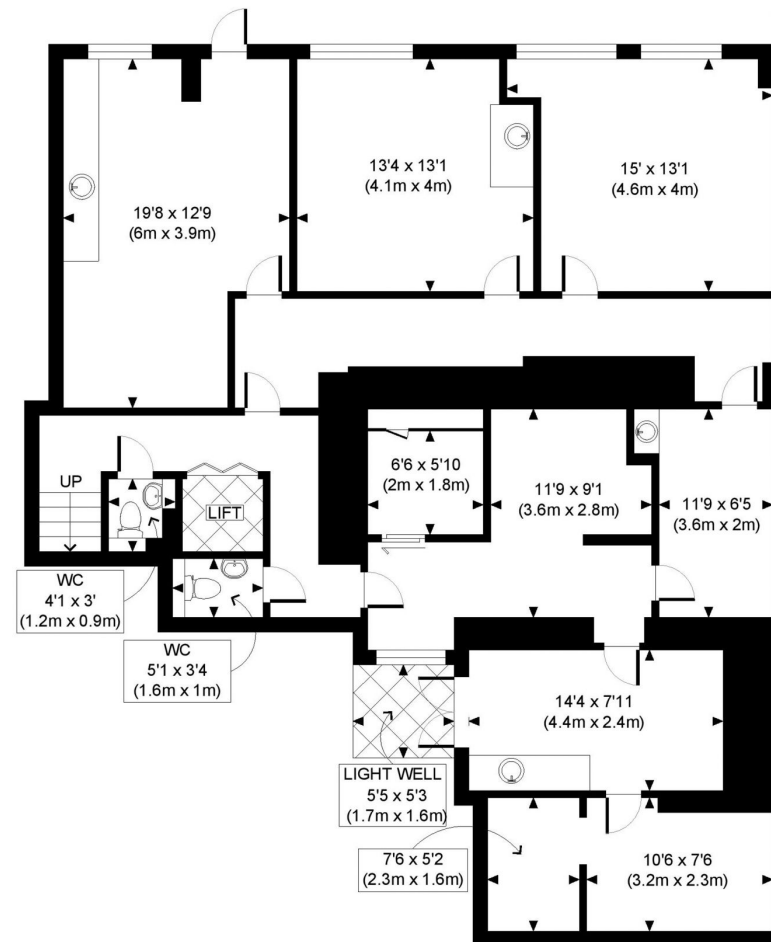
4 to 5 Medical rooms

In the heart of the medical district

Recently Refurbished

33 New Cavendish Street
London,
W1G 9TS

020 7486 4111
jeremyjames@jeremy-james.co.uk



LOWER GROUND FLOOR
GROSS INTERNAL
FLOOR AREA 1525 SQ FT



APPROX. NET INTERNAL FLOOR AREA: 1116 SQ FT/ 104 SQM

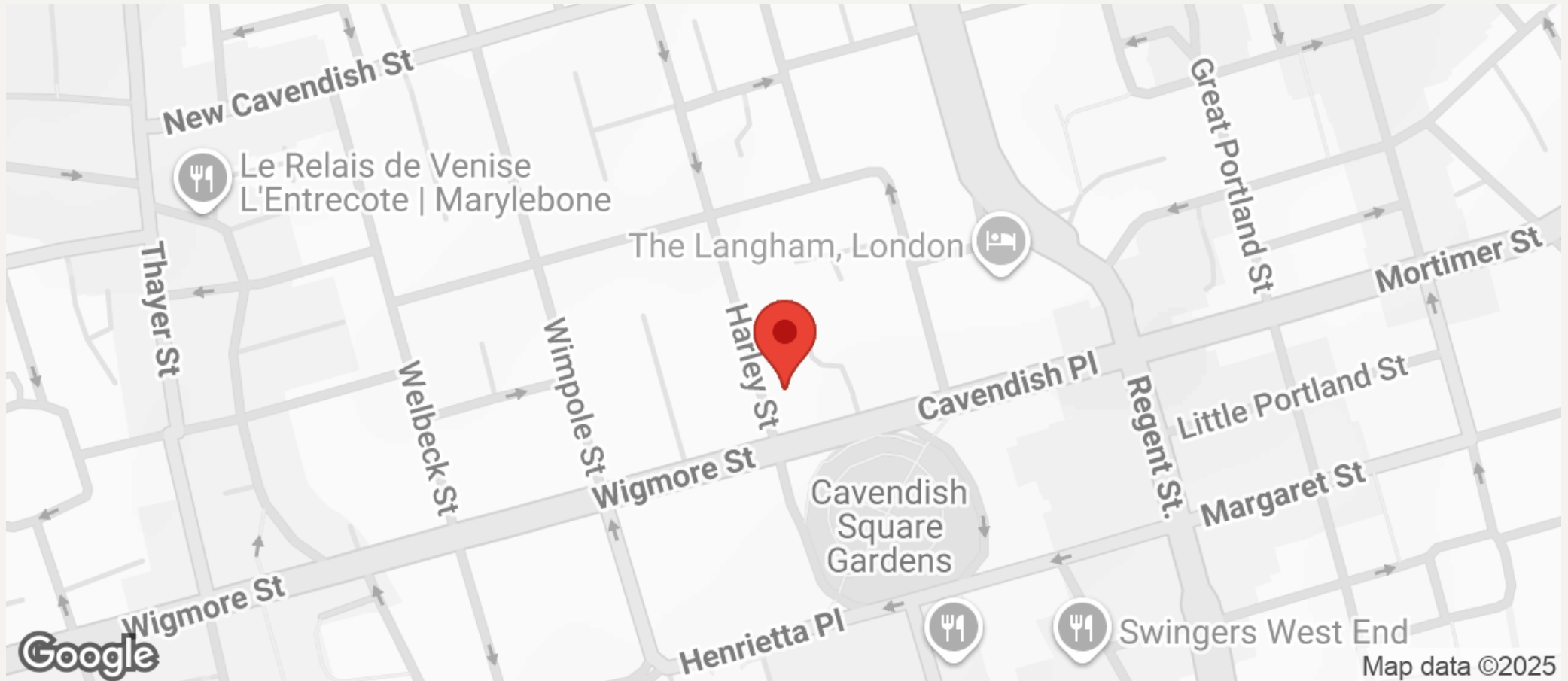
PROPERTY PHOTO PLANS.co.uk
ONE STOP SHOP FOR PROPERTY MARKETING

Whilst every attempt has been made to ensure the accuracy of the floor plan contained here, measurements of the doors, windows, rooms and any other items are approximate and no responsibility is taken for any errors, omissions, or miss-statement. This plan is for illustrative purposes only and should be used as such by any prospective client. The services, systems and appliances shown have not been tested and no guarantee as to the operability or efficiency can be given.



JEREMY JAMES

HARLEY STREET, MARYLEBONE VILLAGE, LONDON W1



All negotiations are subject to contract. The Agents are not authorised to make or accept any contractual offer unless prior written notification to the contrary has been given on behalf of the client. In no other case whatsoever are the Agents (or any employee or sub-agent) authorised to make or give any representation or warranty on behalf of any party, and whilst information and particulars are given in all good faith intending purchasers and lessees must satisfy themselves independently as to the accuracy of all matters upon which then intend to rely. Measurements or distances referred to are approximately only. We have not carried out a survey or tested the services, appliances or specific fittings.

33 New Cavendish Street
London,
W1G 9TS

020 7486 4111
jeremyjames@jeremy-james.co.uk