



# JEREMY JAMES

## BEAUMONT STREET, LONDON, W1



### PRICE

£600 per week

### FURNINSHINGS

Unfurnished

### DEPOSIT

£3,000

33 New Cavendish Street  
London,  
W1G 9TS

020 7486 4111  
[jeremyjames@jeremy-james.co.uk](mailto:jeremyjames@jeremy-james.co.uk)



# JEREMY JAMES

## BEAUMONT STREET, LONDON, W1



### DESCRIPTION

The accommodation comprises two bedrooms, a bathroom, cloakroom, separate kitchen, bright spacious living room in a purpose built block. Bond Street Underground Station is a close walk away as are the open spaces of Regents Park.

### AMENITIES

Two bedrooms

Unfurnished

Newly Decorated

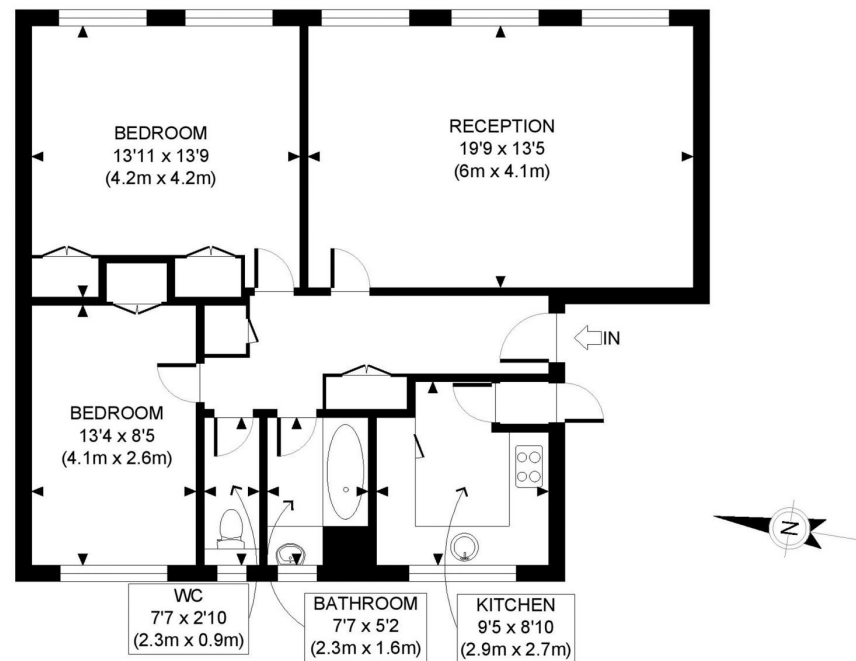
Bright

EPC:E

Westminster Council: Band G

33 New Cavendish Street  
London,  
W1G 9TS

020 7486 4111  
[jeremyjames@jeremy-james.co.uk](mailto:jeremyjames@jeremy-james.co.uk)



FOURTH FLOOR  
GROSS INTERNAL  
FLOOR AREA 833 SQ FT

APPROX. GROSS INTERNAL FLOOR AREA: 833 SQ FT/ 77 SQM

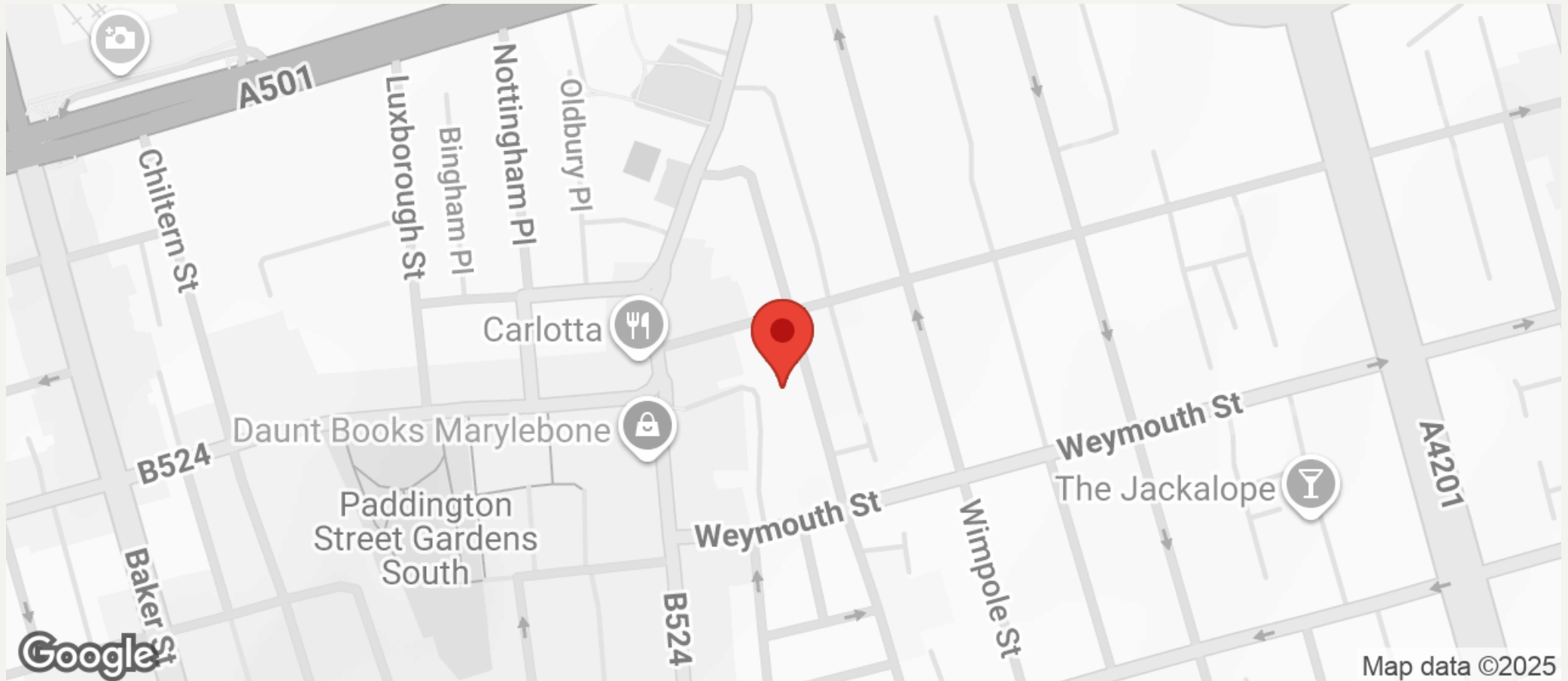
**PROPERTY PHOTO PLANS**.co.uk  
ONE STOP SHOP FOR PROPERTY MARKETING

Whilst every attempt has been made to ensure the accuracy of the floor plan contained here, measurements of the doors, windows, rooms and any other items are approximate and no responsibility is taken for any errors, omissions, or miss-statement. This plan is for illustrative purposes only and should be used as such by any prospective client. The services, systems and appliances shown have not been tested and no guarantee as to the operability or efficiency can be given.



# JEREMY JAMES

## BEAUMONT STREET, LONDON, W1



All negotiations are subject to contract. The Agents are not authorised to make or accept any contractual offer unless prior written notification to the contrary has been given on behalf of the client. In no other case whatsoever are the Agents (or any employee or sub-agent) authorised to make or give any representation or warranty on behalf of any party, and whilst information and particulars are given in all good faith intending purchasers and lessees must satisfy themselves independently as to the accuracy of all matters upon which then intend to rely. Measurements or distances referred to are approximately only. We have not carried out a survey or tested the services, appliances or specific fittings.

33 New Cavendish Street  
London,  
W1G 9TS  
020 7486 4111  
[jeremyjames@jeremy-james.co.uk](mailto:jeremyjames@jeremy-james.co.uk)