



**JEREMY JAMES**

**MAYBURY COURT MARYLEBONE STREET LONDON W1**



**PRICE**  
£895,000

**TENURE**  
Share of Freehold

---

33 New Cavendish Street  
London,  
W1G 9TS  
020 7486 4111  
[jeremyjames@jeremy-james.co.uk](mailto:jeremyjames@jeremy-james.co.uk)



# JEREMY JAMES

## MAYBURY COURT MARYLEBONE STREET LONDON W1



### DESCRIPTION

Entrance hall, reception room, kitchen, two bedrooms, bathroom and access to private garden at rear.

### AMENITIES

Share of Freehold

Third Floor

Passenger lift

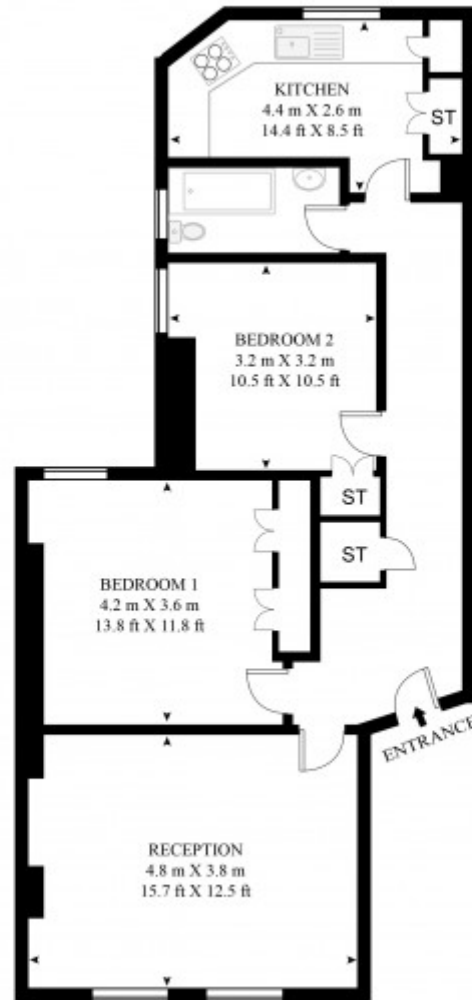
Access to private gardens at rear

Independent gas central heating

Daily portering

MAYBURY COURT, MARYLEBONE STREET

APPROXIMATE GROSS INTERNAL FLOOR AREA 731 SQ.FT (68 SQ.M)



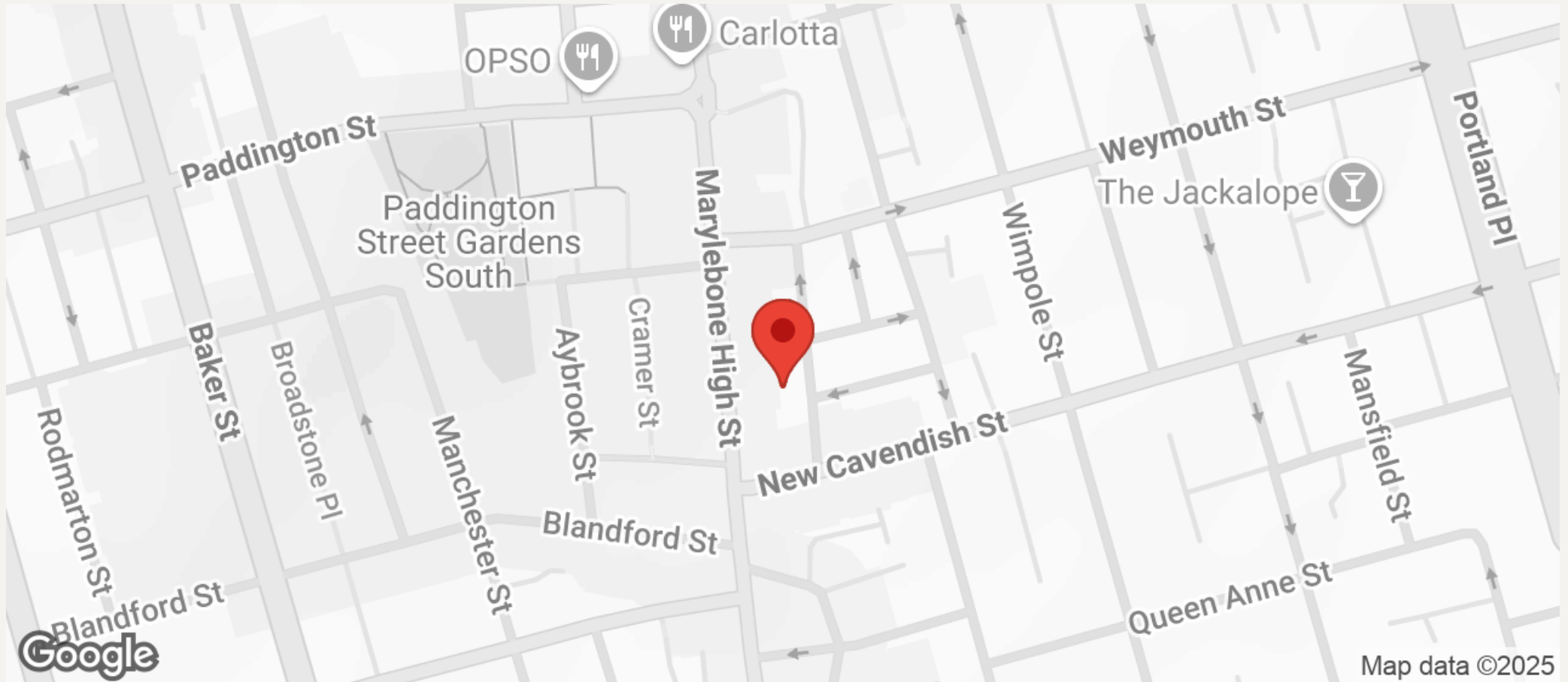
**HDVA**

This floor plan has been defined by the RICS Code of Measurement. This floor plan and all others are for approximate representative purposes only and upon usage is agreed to as such by the client.  
WWW: [hdvirtualart.com](http://hdvirtualart.com) | TEL: 0207 923 7300 | EMAIL: [info@hdvirtualart.com](mailto:info@hdvirtualart.com)



# JEREMY JAMES

MAYBURY COURT MARYLEBONE STREET LONDON W1



All negotiations are subject to contract. The Agents are not authorised to make or accept any contractual offer unless prior written notification to the contrary has been given on behalf of the client. In no other case whatsoever are the Agents (or any employee or sub-agent) authorised to make or give any representation or warranty on behalf of any party, and whilst information and particulars are given in all good faith intending purchasers and lessees must satisfy themselves independently as to the accuracy of all matters upon which they intend to rely. Measurements or distances referred to are approximately only. We have not carried out a survey or tested the services, appliances or specific fittings.

33 New Cavendish Street  
London,  
W1G 9TS

020 7486 4111

[jeremyjames@jeremy-james.co.uk](mailto:jeremyjames@jeremy-james.co.uk)