



JEREMY JAMES

PARK CRESCENT MEWS EAST, MARYLEBONE VILLAGE, LONDON W1



PRICE

£1,995,000

TENURE

Freehold

33 New Cavendish Street
London,
W1G 9TS

020 7486 4111
jeremyjames@jeremy-james.co.uk



JEREMY JAMES

PARK CRESCENT MEWS EAST, MARYLEBONE VILLAGE, LONDON W1



DESCRIPTION

Accommodation comprises; Entrance lobby, Two reception rooms, Three bedrooms, Two bathrooms, Loft area, Double garage, Cloakroom and Terrace.

AMENITIES

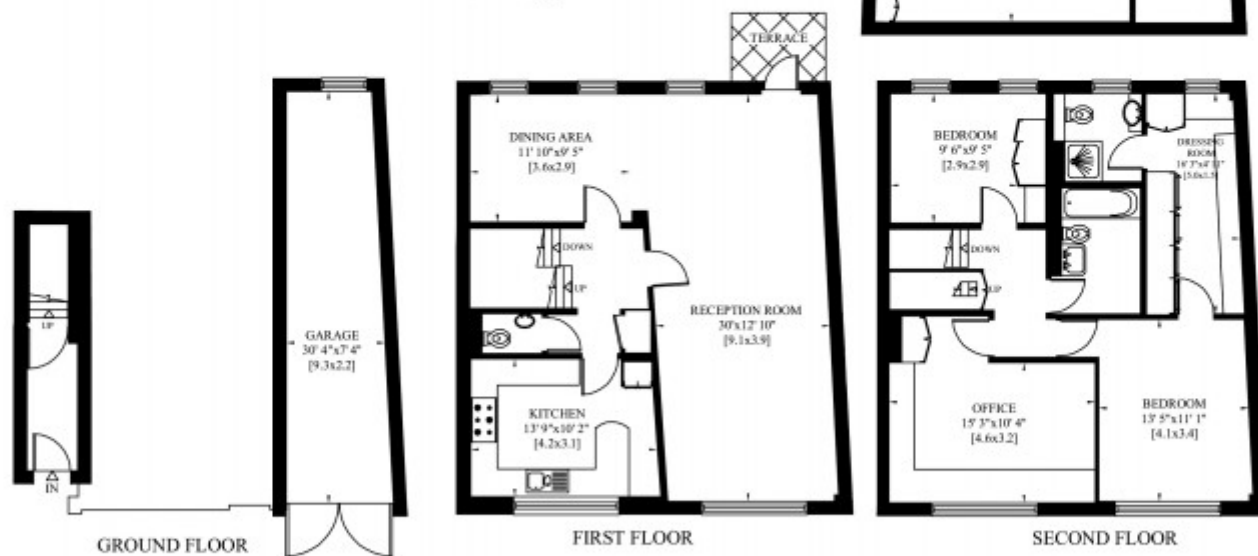
Mews house in private cul de sac
Double garage
Excellent condition
Access to private gardens in Regents Park
Independent gas central heating
Long lease

33 New Cavendish Street
London,
W1G 9TS

020 7486 4111
jeremyjames@jeremy-james.co.uk

5 PARK CRESCENT MEWS EAST
LONDON W1

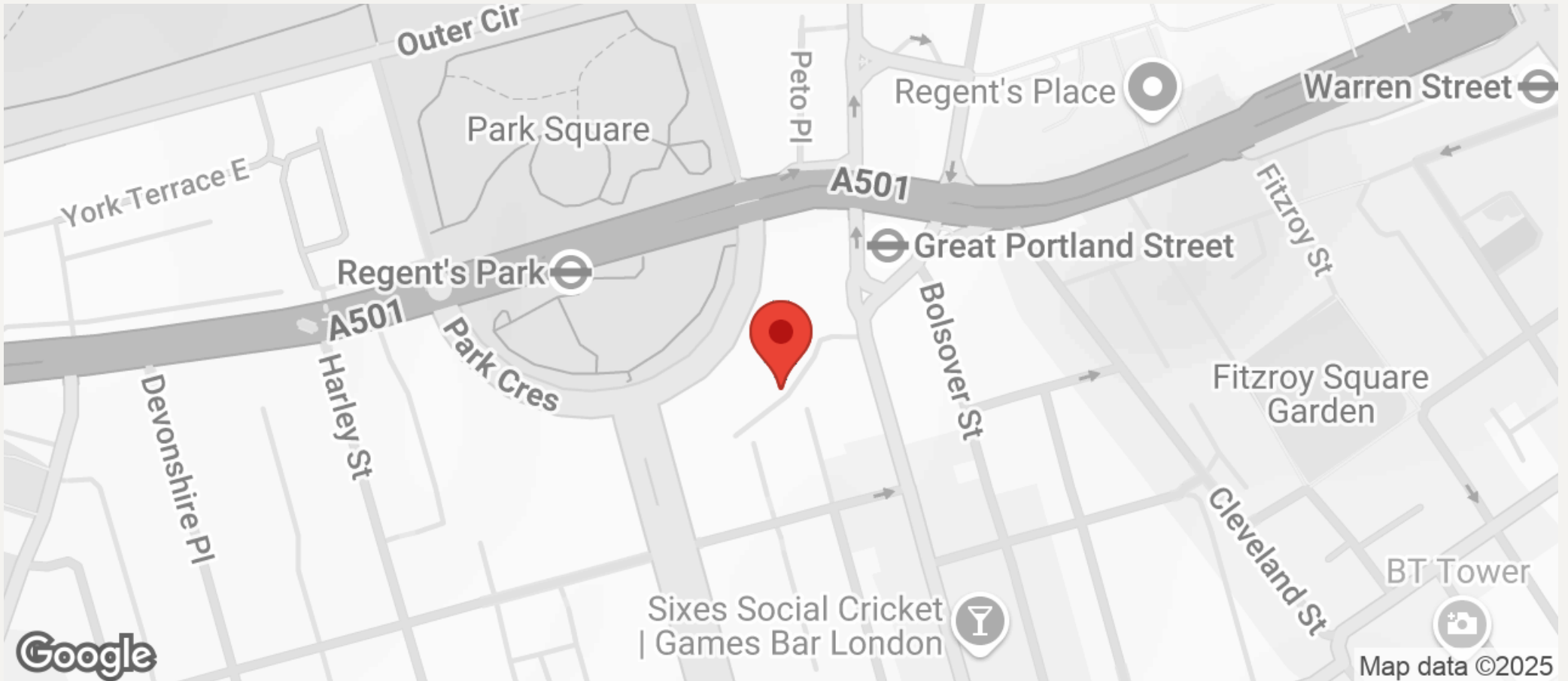
Gross Internal Area: 205 Sq. metres
Including Loft and Garage 2212 Sq. feet





JEREMY JAMES

PARK CRESCENT MEWS EAST, MARYLEBONE VILLAGE, LONDON W1



All negotiations are subject to contract. The Agents are not authorised to make or accept any contractual offer unless prior written notification to the contrary has been given on behalf of the client. In no other case whatsoever are the Agents (or any employee or sub-agent) authorised to make or give any representation or warranty on behalf of any party, and whilst information and particulars are given in all good faith intending purchasers and lessees must satisfy themselves independently as to the accuracy of all matters upon which then intend to rely. Measurements or distances referred to are approximately only. We have not carried out a survey or tested the services, appliances or specific fittings.

33 New Cavendish Street
London,
W1G 9TS

020 7486 4111
jeremyjames@jeremy-james.co.uk