



**JEREMY JAMES**

**PORTLAND PLACE, MARYLEBONE VILLAGE, LONDON, W1**



**PRICE**  
£695,000

**TENURE**  
Freehold

---

33 New Cavendish Street  
London,  
W1G 9TS  
020 7486 4111  
[jeremyjames@jeremy-james.co.uk](mailto:jeremyjames@jeremy-james.co.uk)



# JEREMY JAMES

## PORTLAND PLACE, MARYLEBONE VILLAGE, LONDON, W1



### DESCRIPTION

Located on the West side of Portland Place, between the junctions for New Cavendish Street and Weymouth Street. The property is ideally situated for Marylebone High Street, Regent Street and Regents Park.

Accommodation in more detail comprises; Double reception room with dining area and high ceilings, Bedroom with built in large built in wardrobes, Kitchen with breakfast bar, Bathroom and entrance hall large enough to incorporate a study area.

Situated on the fourth floor (with lift) within this popular portered building. The flat is bright with high ceilings and large windows, in generally very good but dated condition.

### AMENITIES

Over 900 sq ft

Potential for a second bedroom

Resident portorage

Passenger lift

Entry phone

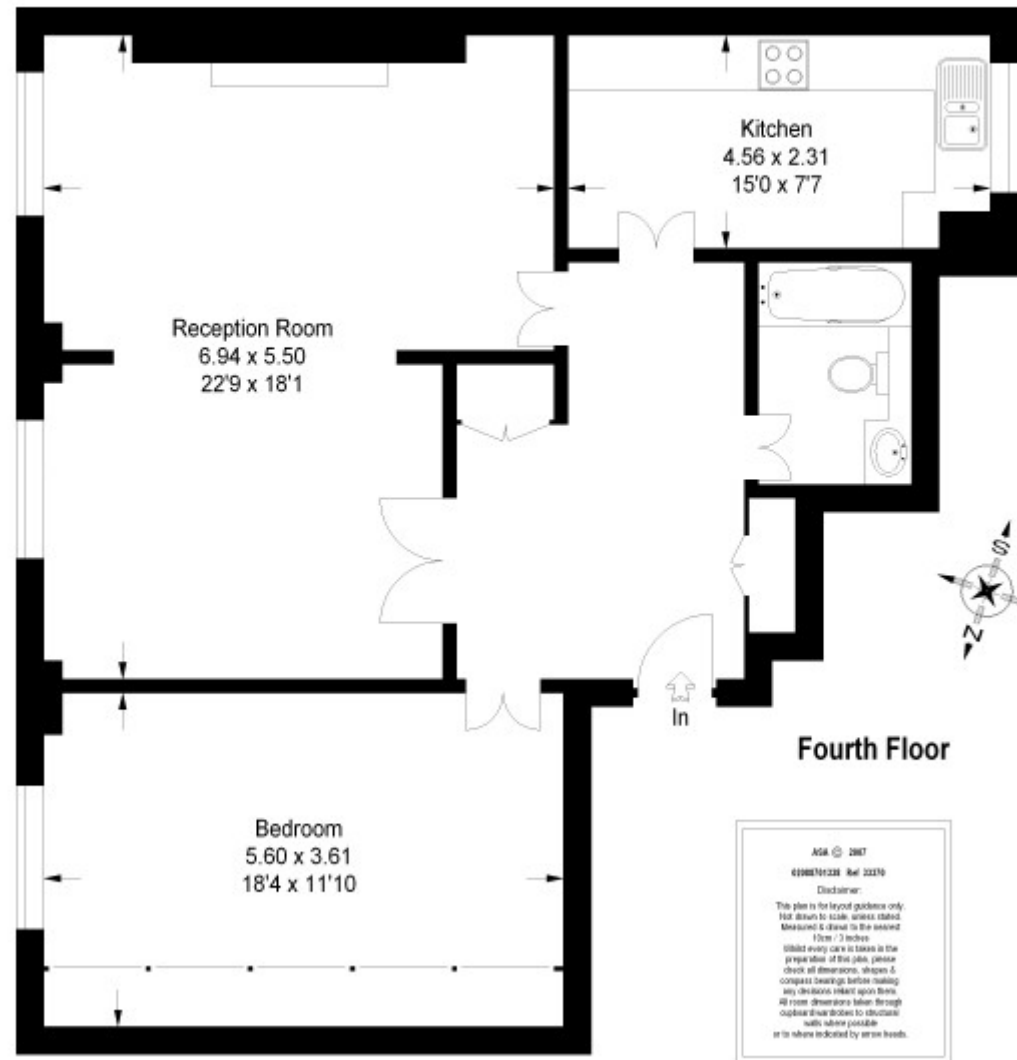
Communal heating and hot water

33 New Cavendish Street  
London,  
W1G 9TS

020 7486 4111  
[jeremyjames@jeremy-james.co.uk](mailto:jeremyjames@jeremy-james.co.uk)

# Portland Place, W1

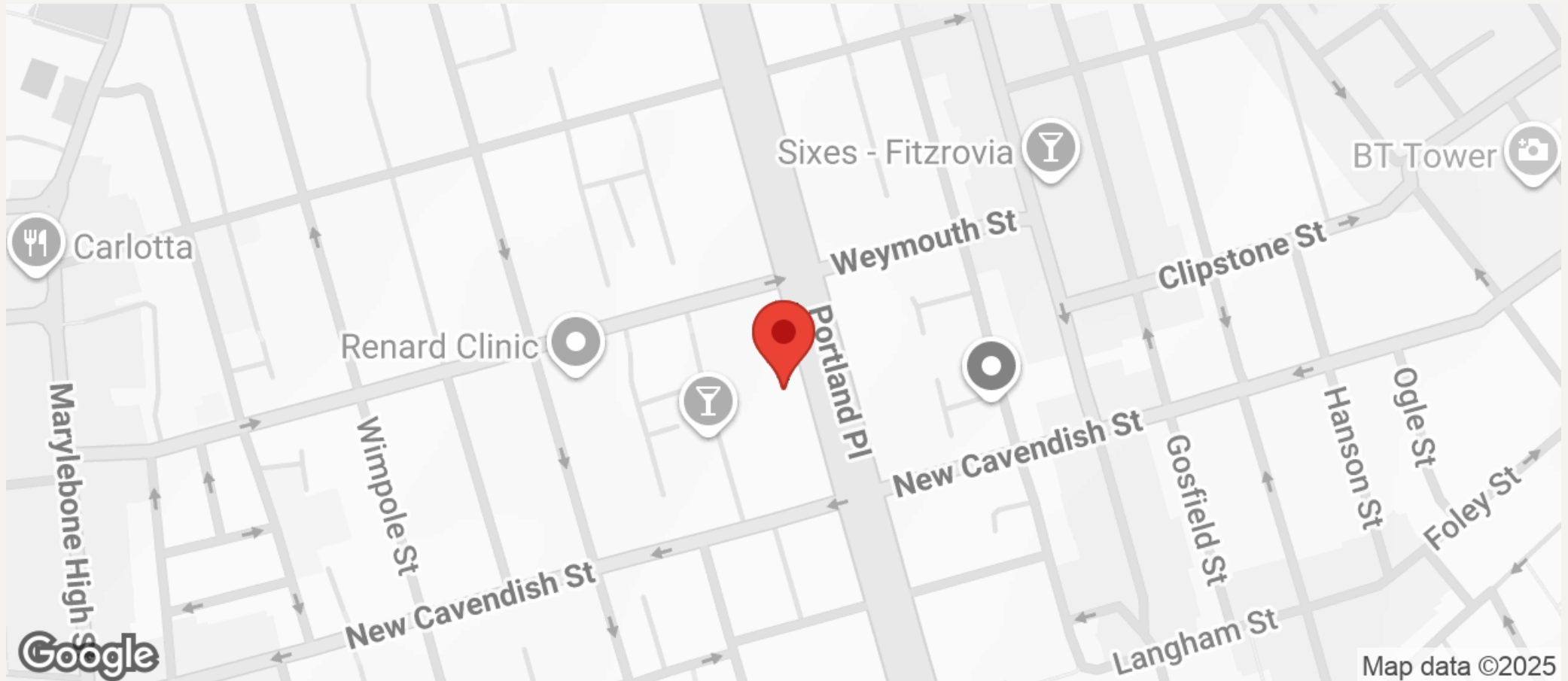
Approx . Gross Internal Area :- 85 sq m / 915 sq ft





# JEREMY JAMES

## PORTLAND PLACE, MARYLEBONE VILLAGE, LONDON, W1



All negotiations are subject to contract. The Agents are not authorised to make or accept any contractual offer unless prior written notification to the contrary has been given on behalf of the client. In no other case whatsoever are the Agents (or any employee or sub-agent) authorised to make or give any representation or warranty on behalf of any party, and whilst information and particulars are given in all good faith intending purchasers and lessees must satisfy themselves independently as to the accuracy of all matters upon which then intend to rely. Measurements or distances referred to are approximately only. We have not carried out a survey or tested the services, appliances or specific fittings.

33 New Cavendish Street  
London,  
W1G 9TS

020 7486 4111

[jeremyjames@jeremy-james.co.uk](mailto:jeremyjames@jeremy-james.co.uk)