



JEREMY JAMES

OSSINGTON BUILDINGS, MARYLEBONE VILLAGE. LONDON W1



PRICE

£595 per week

FURNISHINGS

Furnished/Unfurnished

DEPOSIT

£3,570

33 New Cavendish Street
London,
W1G 9TS

020 7486 4111
jeremyjames@jeremy-james.co.uk



JEREMY JAMES

OSSINGTON BUILDINGS, MARYLEBONE VILLAGE. LONDON W1



DESCRIPTION

Accommodation comprises: reception, open-plan kitchen with integral appliances, wooden floors and french doors to private terrace, double bedroom with generous storage and contemporary bathroom.

AMENITIES

One Double Bedroom

Newly Refurbished

Open Plan Kitchen

Wooden Floors

Terrace

Excellent Finish Throughout

Ground Floor

Furnished by Separate Agreement

33 New Cavendish Street
London,

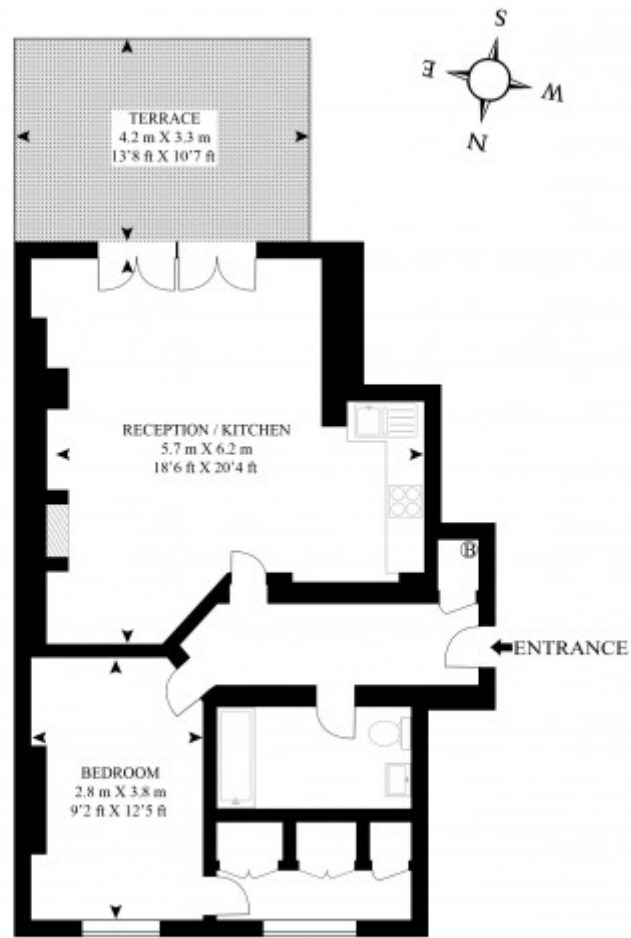
W1G 9TS

020 7486 4111

jeremyjames@jeremy-james.co.uk

FLAT 2, BLOCK E OSSINGTON BUILDING

APPROX GROSS INTERNAL FLOOR AREA 613 SQ.FT (57 SQ.M)



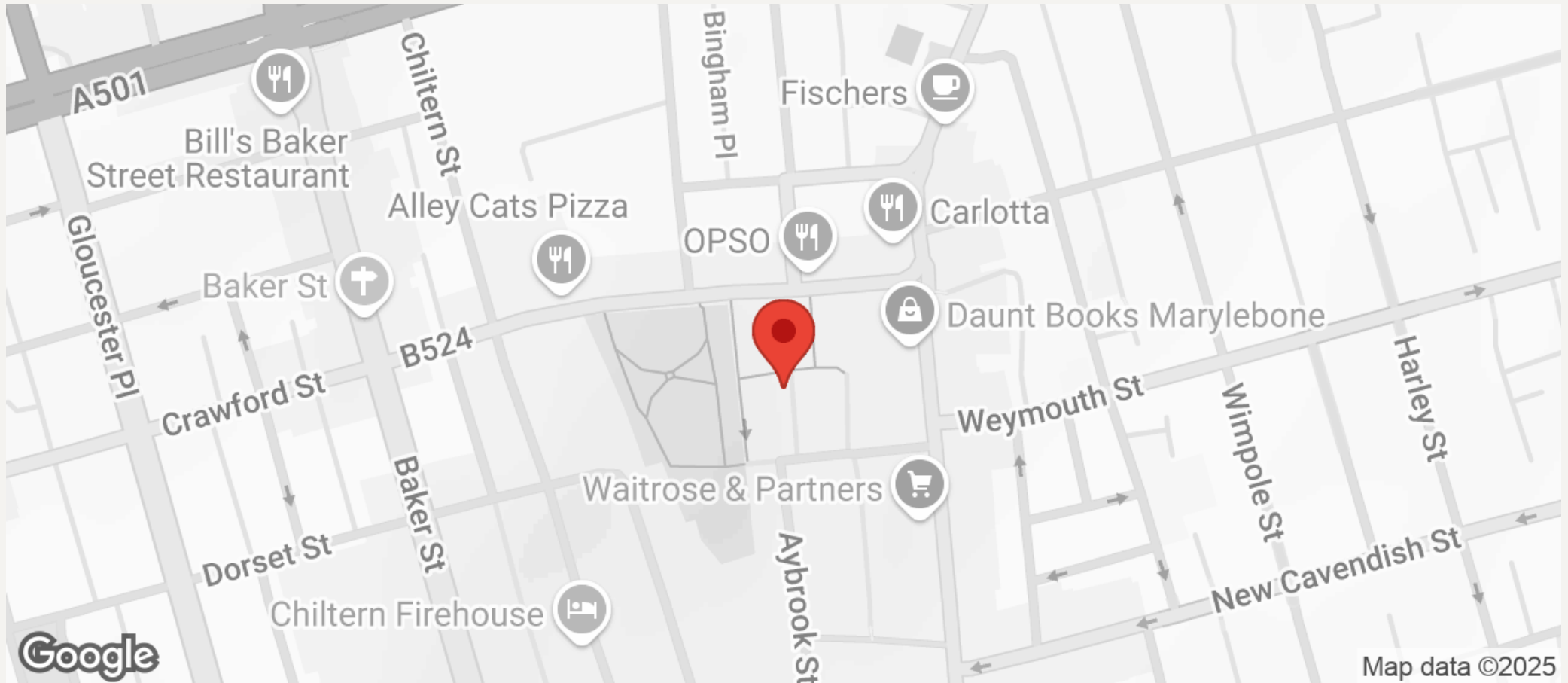
GROUND FLOOR

As Defined by RICS - Code of Measuring Practice
The Floor - plans are for representation purposes only and
should be used as such by any prospective client.



JEREMY JAMES

OSSINGTON BUILDINGS, MARYLEBONE VILLAGE. LONDON W1



All negotiations are subject to contract. The Agents are not authorised to make or accept any contractual offer unless prior written notification to the contrary has been given on behalf of the client. In no other case whatsoever are the Agents (or any employee or sub-agent) authorised to make or give any representation or warranty on behalf of any party, and whilst information and particulars are given in all good faith intending purchasers and lessees must satisfy themselves independently as to the accuracy of all matters upon which they intend to rely. Measurements or distances referred to are approximately only. We have not carried out a survey or tested the services, appliances or specific fittings.

33 New Cavendish Street
London,
W1G 9TS

020 7486 4111

jeremyjames@jeremy-james.co.uk