



JEREMY JAMES

APARTMENT 1, HERON PLACE, MARYLEBONE VILLAGE, LONDON W1



PRICE

£3,250,000

TENURE

Leasehold

33 New Cavendish Street
London,
W1G 9TS

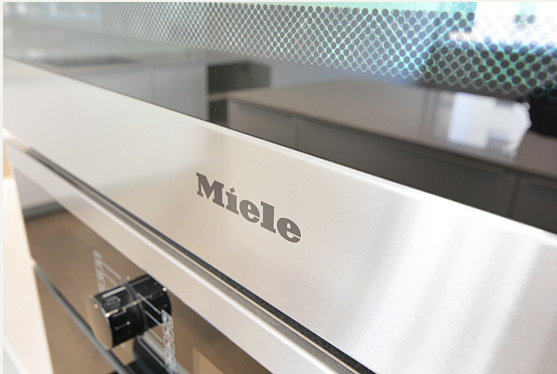
020 7486 4111

jeremyjames@jeremy-james.co.uk



JEREMY JAMES

APARTMENT 1, HERON PLACE, MARYLEBONE VILLAGE, LONDON W1



DESCRIPTION

Accommodation comprises: Entrance hall, Reception room, Kitchen/Dining room, Master bedroom with ensuite bathroom, Second bedroom, Family bathroom, Utility room, Excellent storage and balcony.

A car parking space is available by separate negotiation.

1625 sq ft (151 sq m).

AMENITIES

Unique new development

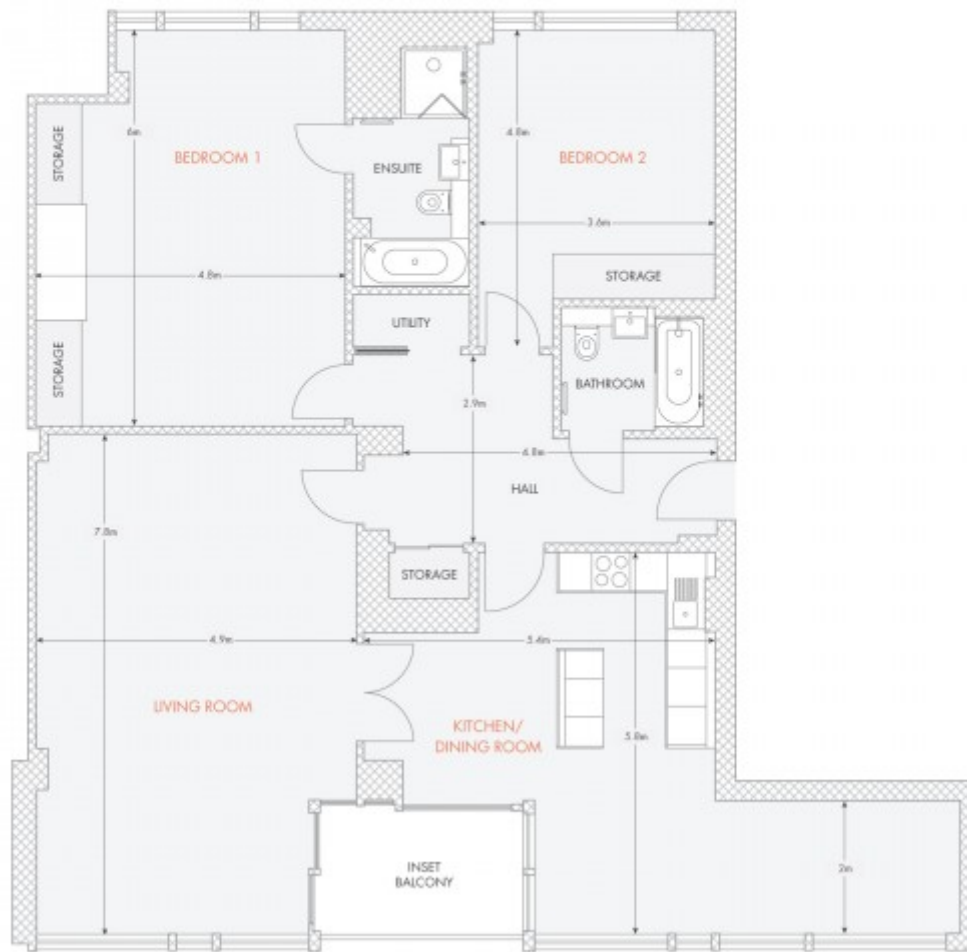
Passenger lift

Comfort cooling

Parking available

33 New Cavendish Street
London,
W1G 9TS

020 7486 4111
jeremyjames@jeremy-james.co.uk





JEREMY JAMES

APARTMENT 1, HERON PLACE, MARYLEBONE VILLAGE, LONDON W1



All negotiations are subject to contract. The Agents are not authorised to make or accept any contractual offer unless prior written notification to the contrary has been given on behalf of the client. In no other case whatsoever are the Agents (or any employee or sub-agent) authorised to make or give any representation or warranty on behalf of any party, and whilst information and particulars are given in all good faith intending purchasers and lessees must satisfy themselves independently as to the accuracy of all matters upon which then intend to rely. Measurements or distances referred to are approximately only. We have not carried out a survey or tested the services, appliances or specific fittings.

33 New Cavendish Street
London,
W1G 9TS

020 7486 4111

jeremyjames@jeremy-james.co.uk