



JEREMY JAMES

WEYMOUTH STREET, MARYLEBONE VILLAGE, LONDON, W1



PRICE

£675 per week

FURNISHINGS

Furnished

DEPOSIT

£4,152

33 New Cavendish Street
London,
W1G 9TS

020 7486 4111
jeremyjames@jeremy-james.co.uk



JEREMY JAMES

WEYMOUTH STREET, MARYLEBONE VILLAGE, LONDON, W1



DESCRIPTION

This recently refurbished Grade II listed garden flat comprises reception room with working pebble gas fire, open plan kitchen with granite work surfaces, master bedroom with fitted storage and en suite bathroom with court yard leading from bedroom. It boasts a further bedroom and mosaic tiled bathroom. It also offers plenty of storage with external storage for bikes. Weymouth Street is ideally located close to Marylebone High Street and Oxford Street. Baker Street tube station and Bond Street tube station are a few minutes walk away.

AMENITIES

Grade II Listed Building

Outside Space

Wooden Floors

Fireplace

Furnished



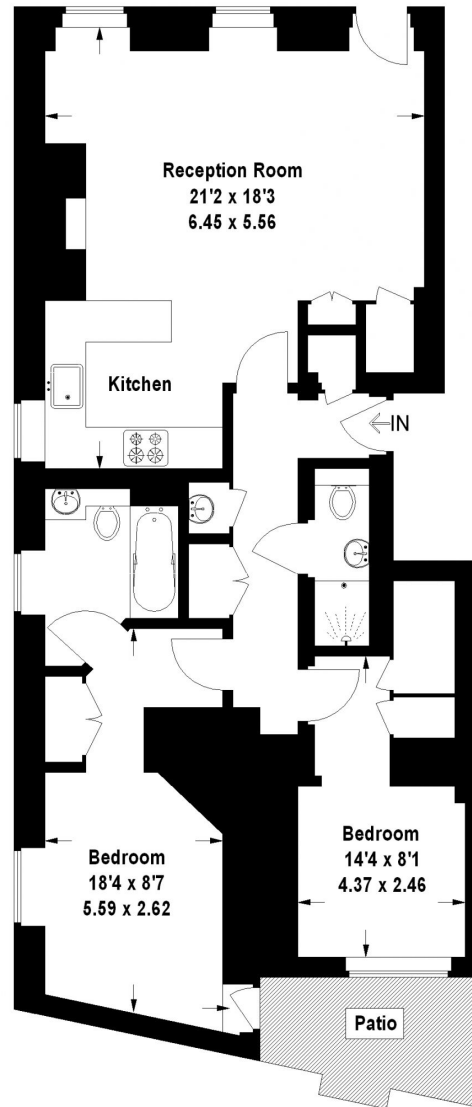
33 New Cavendish Street
London,
W1G 9TS

020 7486 4111

jeremyjames@jeremy-james.co.uk

Weymouth Street, W1

Approximate Gross Internal Area
79.5 sq m / 856 sq ft



Garden Flat

This plan is for layout guidance only. Not drawn to scale unless stated. Windows and door openings are approximate. Whilst every care is taken in the preparation of this plan, please check all dimensions, shapes and compass bearings before making any decisions reliant upon them. (ID 151935)



JEREMY JAMES

WEYMOUTH STREET, MARYLEBONE VILLAGE, LONDON, W1



All negotiations are subject to contract. The Agents are not authorised to make or accept any contractual offer unless prior written notification to the contrary has been given on behalf of the client. In no other case whatsoever are the Agents (or any employee or sub-agent) authorised to make or give any representation or warranty on behalf of any party, and whilst information and particulars are given in all good faith intending purchasers and lessees must satisfy themselves independently as to the accuracy of all matters upon which then intend to rely. Measurements or distances referred to are approximately only. We have not carried out a survey or tested the services, appliances or specific fittings.

33 New Cavendish Street
London,
W1G 9TS

020 7486 4111

jeremyjames@jeremy-james.co.uk