



JEREMY JAMES

MILFORD HOUSE, QUEEN ANNE STREET, LONDON W1



PRICE
£750,000

TENURE
Leasehold

33 New Cavendish Street
London,
W1G 9TS
020 7486 4111
jeremyjames@jeremy-james.co.uk



JEREMY JAMES

MILFORD HOUSE, QUEEN ANNE STREET, LONDON W1



DESCRIPTION

The accommodation comprises entrance hall, three rooms, kitchen, bathroom and separate cloakroom.

The apartment has the benefit of also being used as a live and practice flat or alternatively can be used solely for residential purposes and subject to refurbishment works being carried out will make an ideal 1/2 bedroom apartment.

The approximate floor area is 818 sq.ft. (76 sq.m) Underground garaging can also be made available on separate terms.

AMENITIES

Third Floor

Two passenger lifts

Resident caretaker

Residential or Live and Practice

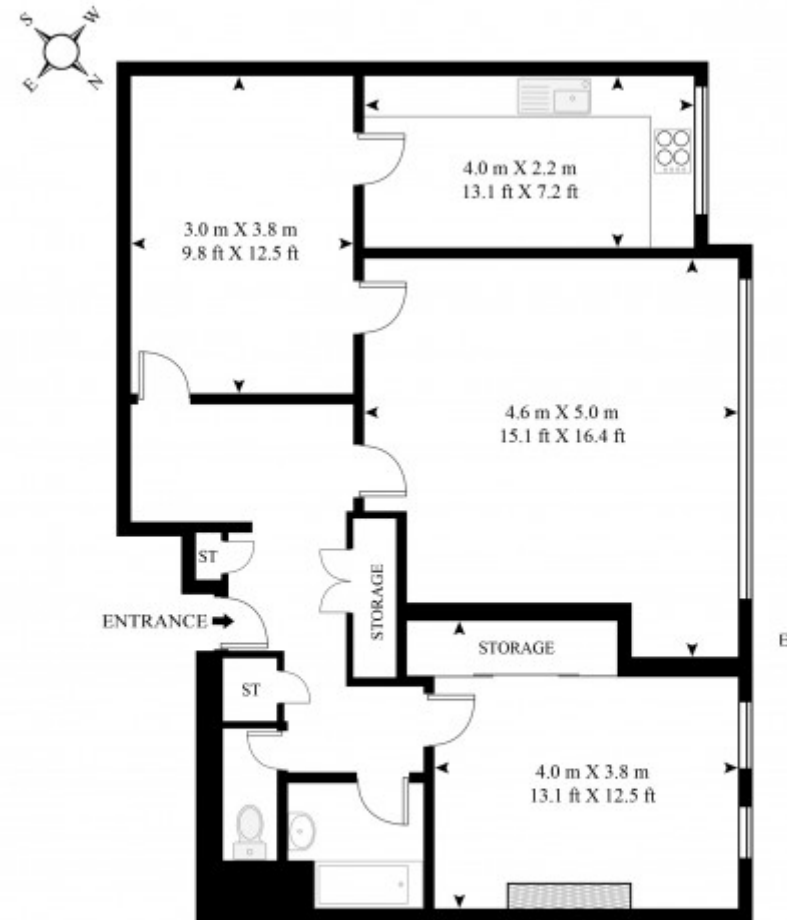
Resident parking subject to the usual consent

33 New Cavendish Street
London,
W1G 9TS

020 7486 4111
jeremyjames@jeremy-james.co.uk

MILFORD HOUSE, QUEEN ANNE STREET

APPROXIMATE GROSS INTERNAL FLOOR AREA 818 SQ.FT (76 SQ.M)



THIRD FLOOR

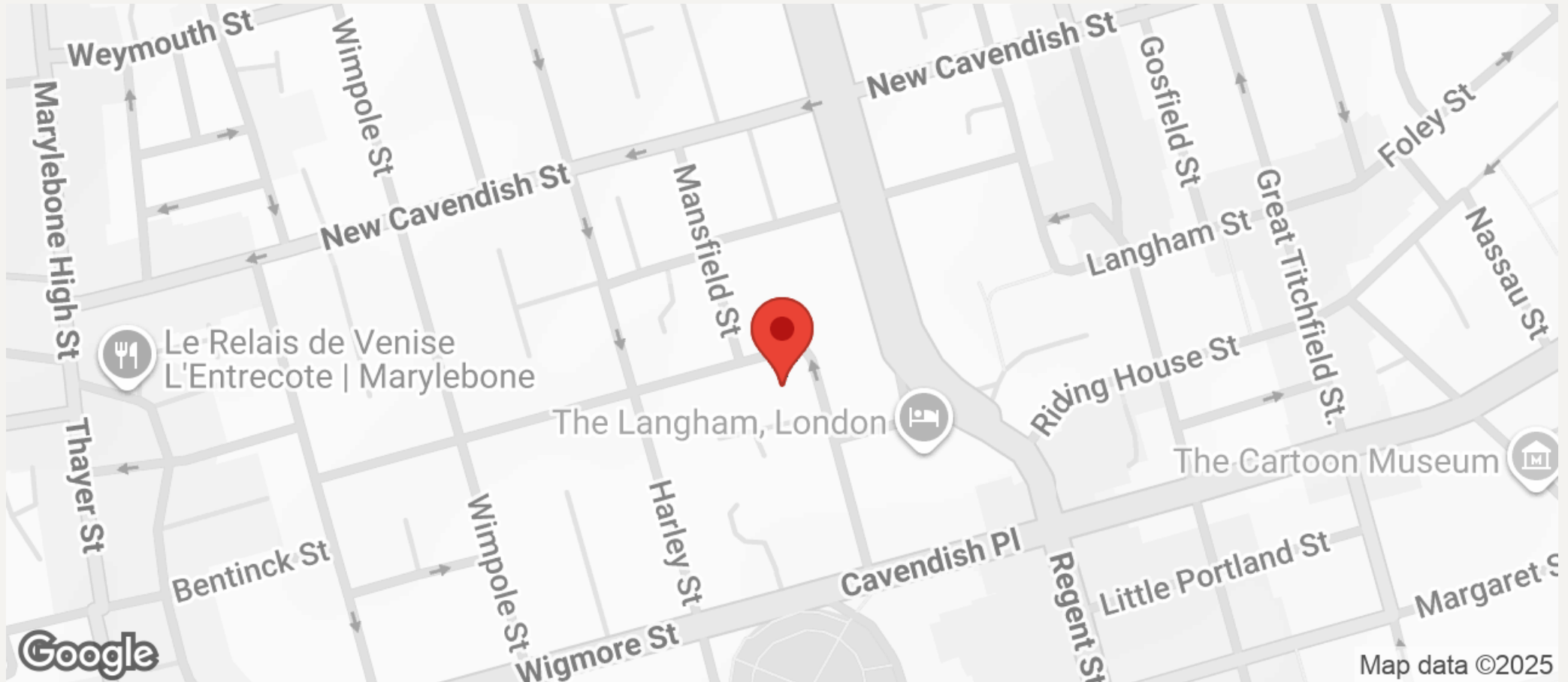
HDVA

This floor plan has been defined by the RICS Code of Measurement. This floor plan and all others are for approximate representative purposes only and upon usage is agreed to as such by the client.
WWW: hdvirtualart.com | TEL: 0207 923 7300 | EMAIL: info@hdvirtualart.com



JEREMY JAMES

MILFORD HOUSE, QUEEN ANNE STREET, LONDON W1



All negotiations are subject to contract. The Agents are not authorised to make or accept any contractual offer unless prior written notification to the contrary has been given on behalf of the client. In no other case whatsoever are the Agents (or any employee or sub-agent) authorised to make or give any representation or warranty on behalf of any party, and whilst information and particulars are given in all good faith intending purchasers and lessees must satisfy themselves independently as to the accuracy of all matters upon which then intend to rely. Measurements or distances referred to are approximately only. We have not carried out a survey or tested the services, appliances or specific fittings.

33 New Cavendish Street
London,
W1G 9TS

020 7486 4111
jeremyjames@jeremy-james.co.uk