



JEREMY JAMES

HARLEY PLACE, MARYLEBONE VILLAGE, LONDON, W1



PRICE

£1,350 per week

FURNINSHINGS

Furnished

DEPOSIT

£8,100

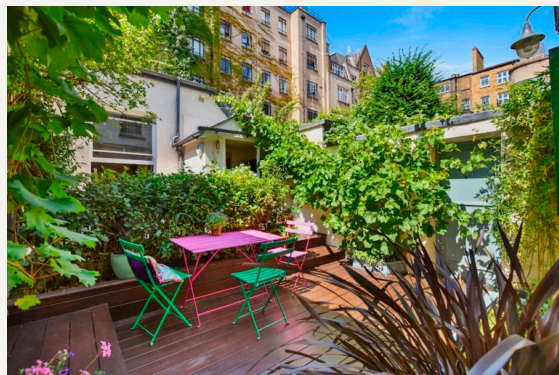
33 New Cavendish Street
London,
W1G 9TS

020 7486 4111
jeremyjames@jeremy-james.co.uk



JEREMY JAMES

HARLEY PLACE, MARYLEBONE VILLAGE, LONDON, W1



DESCRIPTION

A unique opportunity to acquire a mews in one of the most sought after mews in the Marylebone Village. This 2 bedroom mews benefits from high ceilings, garage and a beautiful private garden. The accommodation comprises of entrance hall, reception room, two bedrooms, bathroom, shower room, cloakroom, study and a kitchen.

Rent includes heating and hot water

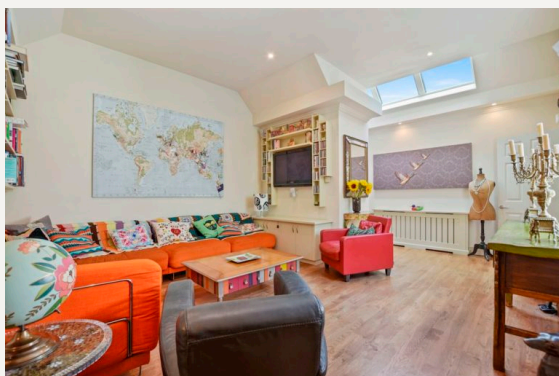
AMENITIES

Garden

Garage

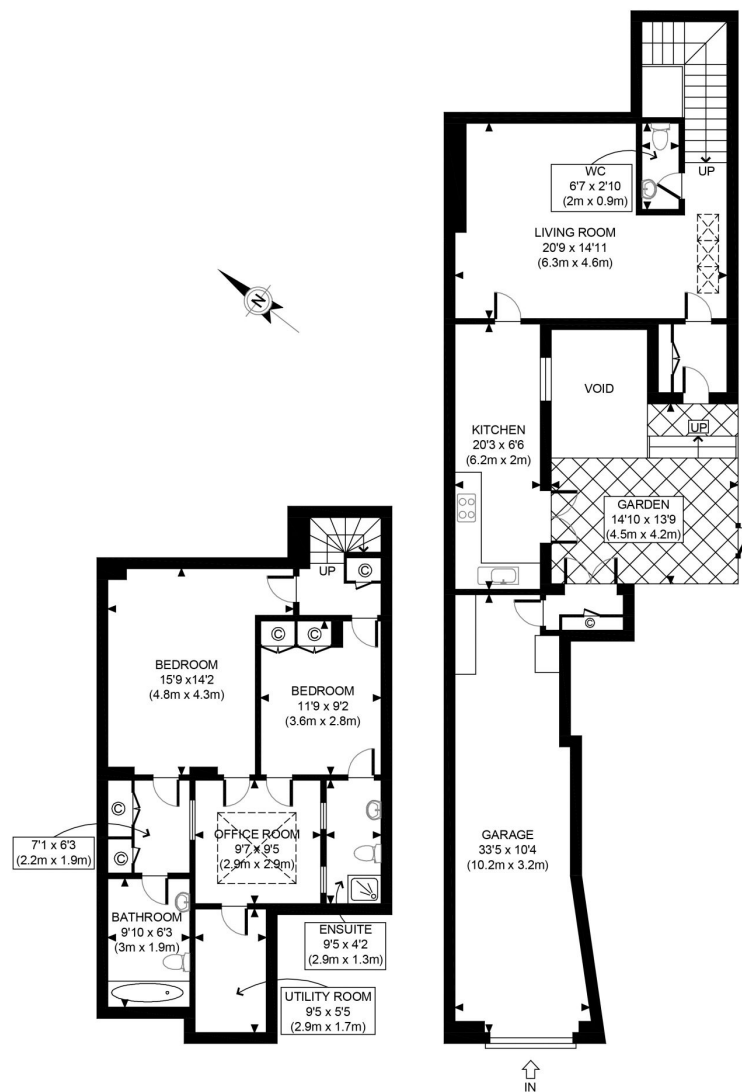
Two Double Bedrooms

EPC Rating E



33 New Cavendish Street
London,
W1G 9TS

020 7486 4111
jeremyjames@jeremy-james.co.uk



LOWER GROUND FLOOR
GROSS INTERNAL
FLOOR AREA 663 SQ FT

GROUND FLOOR
GROSS INTERNAL
FLOOR AREA 835 SQ FT

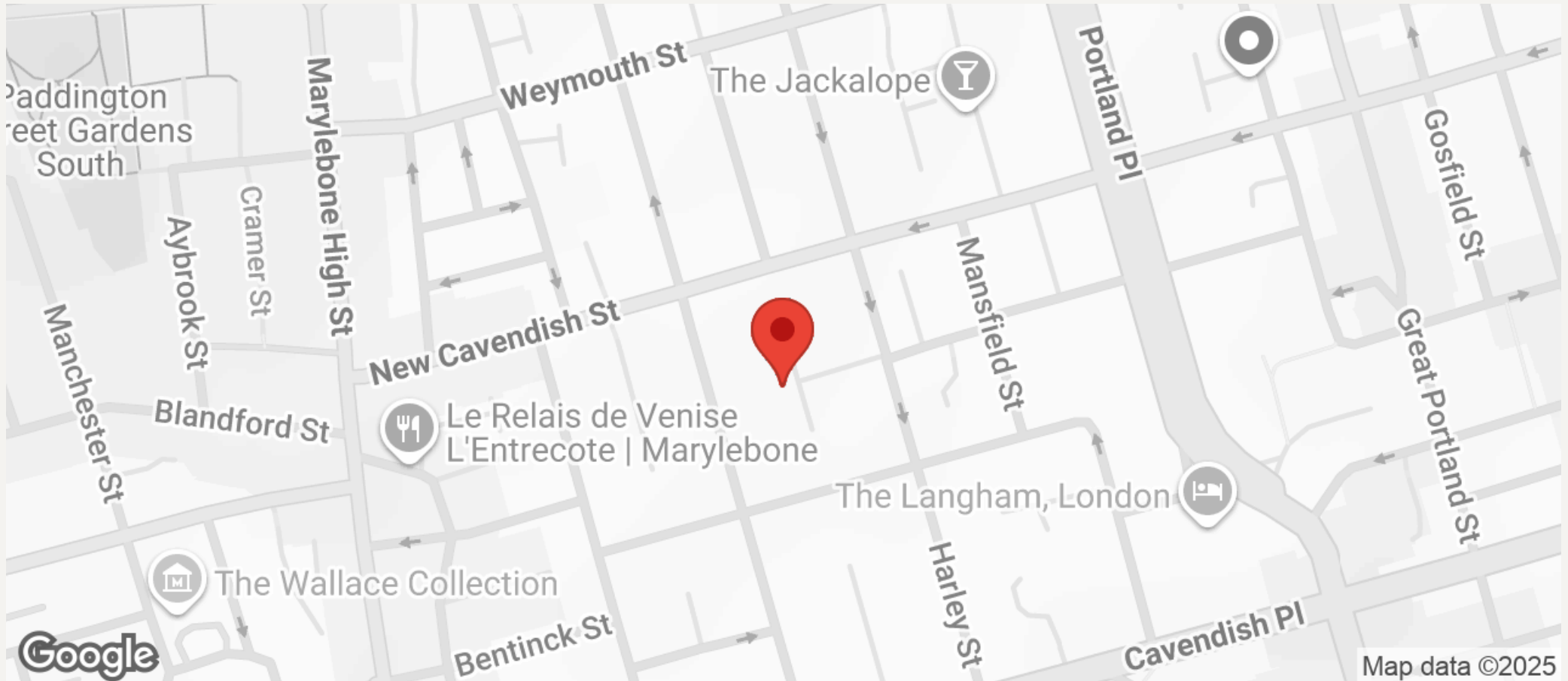
APPROX. GROSS INTERNAL FLOOR AREA 1498 SQ FT / 139 SQM

Disclaimer: Floor plan measurements are approximate and are for illustrative purposes only. While we do not doubt the floor plan accuracy and completeness, you or your advisors should conduct a careful, independent investigation of the property in respect of monetary valuation



JEREMY JAMES

HARLEY PLACE, MARYLEBONE VILLAGE, LONDON, W1



All negotiations are subject to contract. The Agents are not authorised to make or accept any contractual offer unless prior written notification to the contrary has been given on behalf of the client. In no other case whatsoever are the Agents (or any employee or sub-agent) authorised to make or give any representation or warranty on behalf of any party, and whilst information and particulars are given in all good faith intending purchasers and lessees must satisfy themselves independently as to the accuracy of all matters upon which then intend to rely. Measurements or distances referred to are approximately only. We have not carried out a survey or tested the services, appliances or specific fittings.

33 New Cavendish Street
London,
W1G 9TS

020 7486 4111
jeremyjames@jeremy-james.co.uk