



JEREMY JAMES

WELBECK STREET, MARYLEBONE VILLAGE, LONDON W1



PRICE

£695 per week

FURNINSHINGS

Furnished

DEPOSIT

£3,475

33 New Cavendish Street
London,
W1G 9TS

020 7486 4111
jeremyjames@jeremy-james.co.uk



JEREMY JAMES

WELBECK STREET, MARYLEBONE VILLAGE, LONDON W1



DESCRIPTION

The apartment boasts wood flooring throughout and plenty of storage. The accommodation comprises of a fully fitted open plan kitchen, double bedroom with fitted wardrobe and contemporary bathroom. It is situated on the third floor of the building with the added benefit of a lift that goes to the second floor.

Bond Street underground station is a short walk away allowing for easy access.

AMENITIES

Recently Renovated

Wood Floors

Plenty of Storage

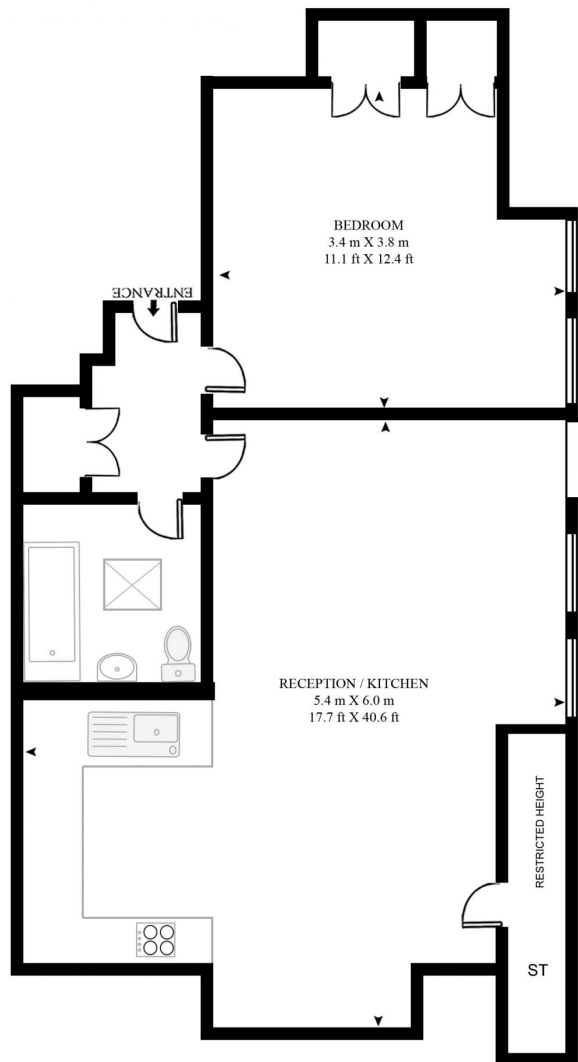
EPC Rating E

33 New Cavendish Street
London,
W1G 9TS

020 7486 4111
jeremyjames@jeremy-james.co.uk

WELBECK STREET

APPROXIMATE GROSS INTERNAL FLOOR AREA 439 SQ.FT (40.8 SQ.M)

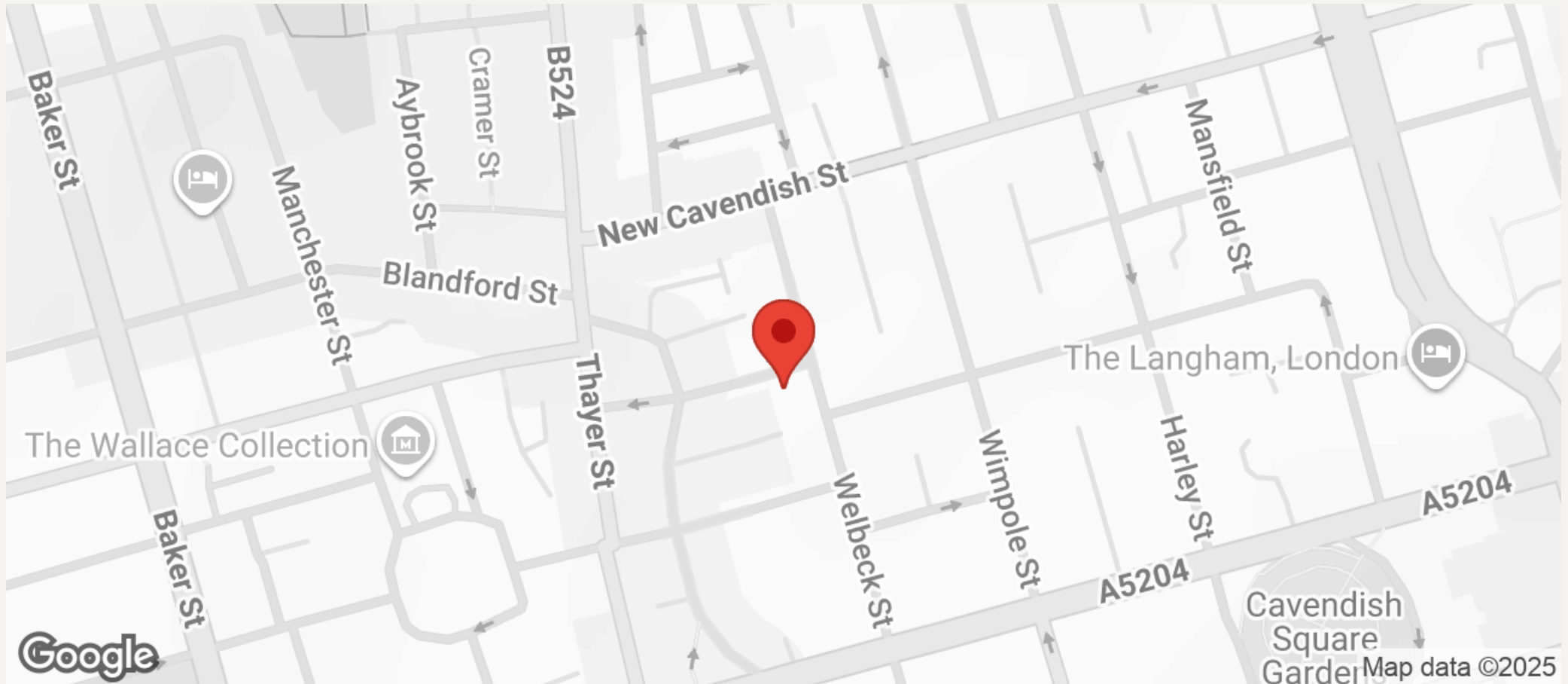


FOURTH FLOOR



JEREMY JAMES

WELBECK STREET, MARYLEBONE VILLAGE, LONDON W1



All negotiations are subject to contract. The Agents are not authorised to make or accept any contractual offer unless prior written notification to the contrary has been given on behalf of the client. In no other case whatsoever are the Agents (or any employee or sub-agent) authorised to make or give any representation or warranty on behalf of any party, and whilst information and particulars are given in all good faith intending purchasers and lessees must satisfy themselves independently as to the accuracy of all matters upon which then intend to rely. Measurements or distances referred to are approximately only. We have not carried out a survey or tested the services, appliances or specific fittings.

33 New Cavendish Street
London,
W1G 9TS

020 7486 4111

jeremyjames@jeremy-james.co.uk