



JEREMY JAMES

HARLEY STREET, MARYLEBONE VILLAGE. LONDON W1G



PRICE

£1,100 per week

FURNINSHINGS

Furnished/Unfurnished

DEPOSIT

£6,600

33 New Cavendish Street
London,
W1G 9TS

020 7486 4111
jeremyjames@jeremy-james.co.uk



JEREMY JAMES

HARLEY STREET, MARYLEBONE VILLAGE. LONDON W1G



DESCRIPTION

The property comprises three reception rooms, kitchen, two double bedrooms, two single bedrooms, one with en suite, a further family bathroom and a guest WC.

Harley Street is ideally located in the heart of Marylebone Village. You are never far from the area of shops on Oxford Street, the boutiques of Marylebone High Street and the fast open spaces of Regents Park.

Bond Underground Station (Central Line/Jubilee Line) is close by for easy access to Central London, while for motorists the A40 offers routes in and out of London.

AMENITIES

Four Bedrooms

Three Reception Rooms

Two Bathrooms & Guest WC

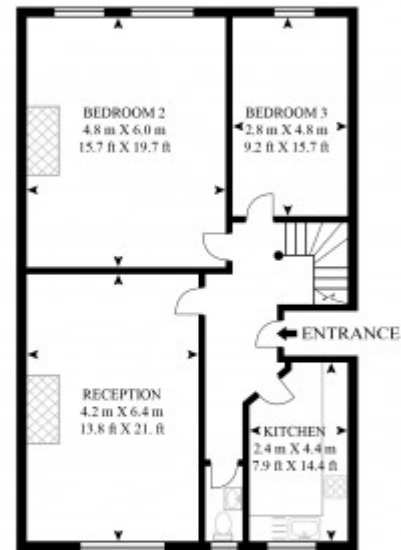
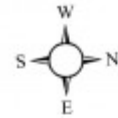
Third & Fourth Floor

Furnished by Separate Agreement

33 New Cavendish Street
London,
W1G 9TS

020 7486 4111
jeremyjames@jeremy-james.co.uk

3RD AND 4TH FLOOR FLAT, 130 HARLEY STREET
APPROXIMATE GROSS INTERNAL FLOOR AREA 2012 SQ.FT (187 SQ.M)



THIRD FLOOR

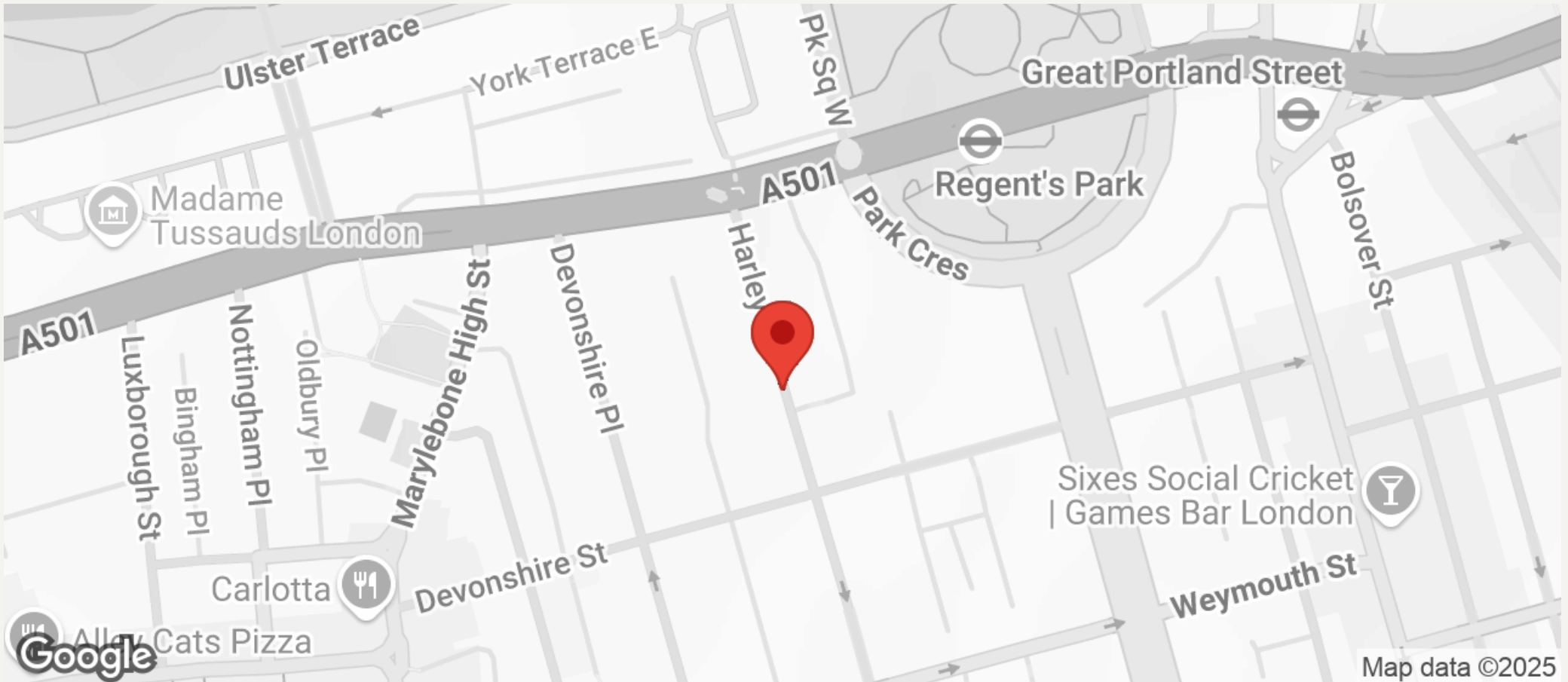


FOURTH FLOOR



JEREMY JAMES

HARLEY STREET, MARYLEBONE VILLAGE. LONDON W1G



All negotiations are subject to contract. The Agents are not authorised to make or accept any contractual offer unless prior written notification to the contrary has been given on behalf of the client. In no other case whatsoever are the Agents (or any employee or sub-agent) authorised to make or give any representation or warranty on behalf of any party, and whilst information and particulars are given in all good faith intending purchasers and lessees must satisfy themselves independently as to the accuracy of all matters upon which then intend to rely. Measurements or distances referred to are approximately only. We have not carried out a survey or tested the services, appliances or specific fittings.

33 New Cavendish Street
London,
W1G 9TS

020 7486 4111

jeremyjames@jeremy-james.co.uk