

HEALTHCARE SALES

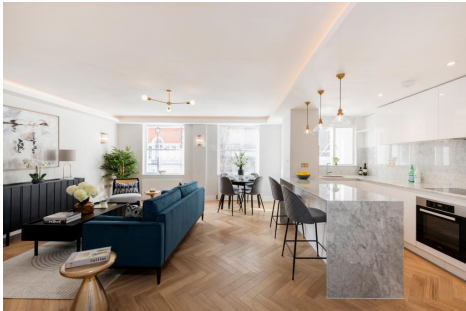


HARLEY STREET, MARYLEBONE VILLAGE, LONDON W1 £1,800,000

Jeremy James and Company are delighted to offer this live and practice apartment for sale.

AMENITIES

- Second Floor
- Porter
- Reside and Practice
- Lift



HARLEY STREET, MARYLEBONE VILLAGE, LONDON W1 £1,750,000

Stylishly refurbished three bedroom apartment available in this sought after portered block, with passenger lift and underground parking.

AMENITIES

- Medical Licence available subject to landlords consent
- 3 Bedrooms
- 2 Bathrooms
- Moments from Marylebone High Street
- Porter
- Garage Space